

Newick Neighbourhood Development Plan

**Information Statement for
Referendum on 26 February 2015**



Lewes District Council

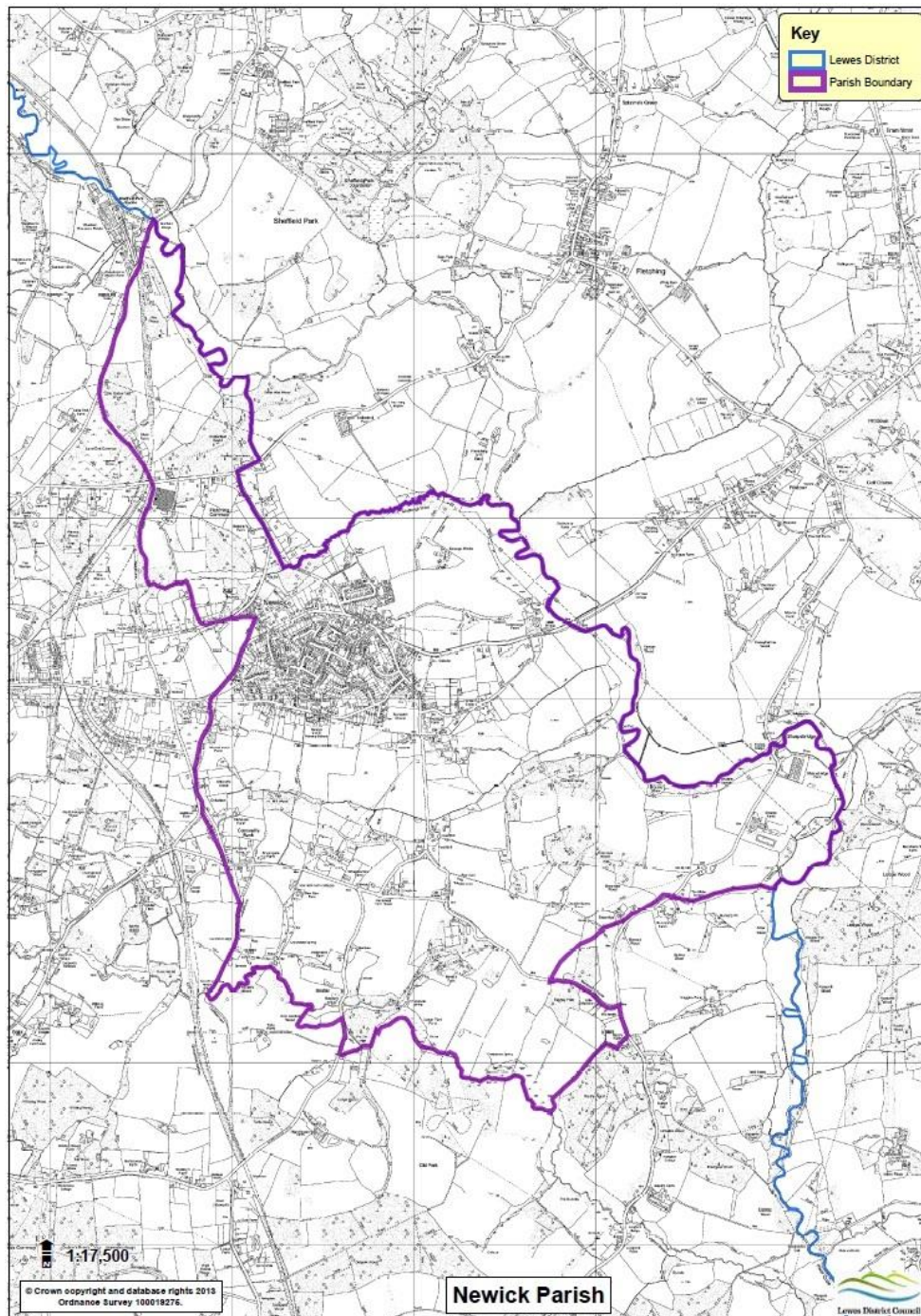
Introduction

A referendum on the Newick Neighbourhood Plan will be held on Thursday 26 February 2015. The referendum will be conducted based on procedures which are similar to those used at local government elections.

The question to be asked in the referendum is:

‘Do you want Lewes District Council to use the Neighbourhood Plan for Newick Parish to help it decide planning applications in the neighbourhood area?’

The neighbourhood area is the entire parish of Newick and is marked in the map below:



Can I vote?

You can vote in the referendum if you live in Newick Parish and:

- you are registered to vote in local council elections; and
- you are 18 years of age or over on 26 February 2015

You have to be registered to vote by Tuesday 10 February 2015 to vote in the referendum. You can check if you are registered to vote by calling our Helpline on 01273 484117.

Referendum Expenses

The Referendum expenses limit that will apply in relation to the Referendum is £2478.82. The number of persons entitled to vote in the Referendum by reference to which the limit has been calculated is 1,980.

Specified Documents

The relevant regulations state that we must make available the following documents:

- The referendum version of the Newick Neighbourhood Plan
- The independent examiner's report on the draft Newick Neighbourhood Plan
- A summary of the representations submitted to the independent examiner
- A statement setting out that the District Council believes that the Newick Neighbourhood Plan meets the basic conditions and relevant Regulations (included within the document known as the Decision Statement)
- A statement setting out general information as to town and country planning (including neighbourhood planning) and the referendum (included within the 'Newick Neighbourhood Development Plan: Voting Information for Referendum on 26 February 2015' Document)

These documents have been made available online at www.lewes.gov.uk/planning/22187.asp, a webpage that contains additional information about the Newick Neighbourhood Plan.

Copies of the documents can also be viewed at the District Council's offices at Southover House, Southover Road, Lewes, BN7 1AB. The offices are open between 9am and 5pm during weekdays.