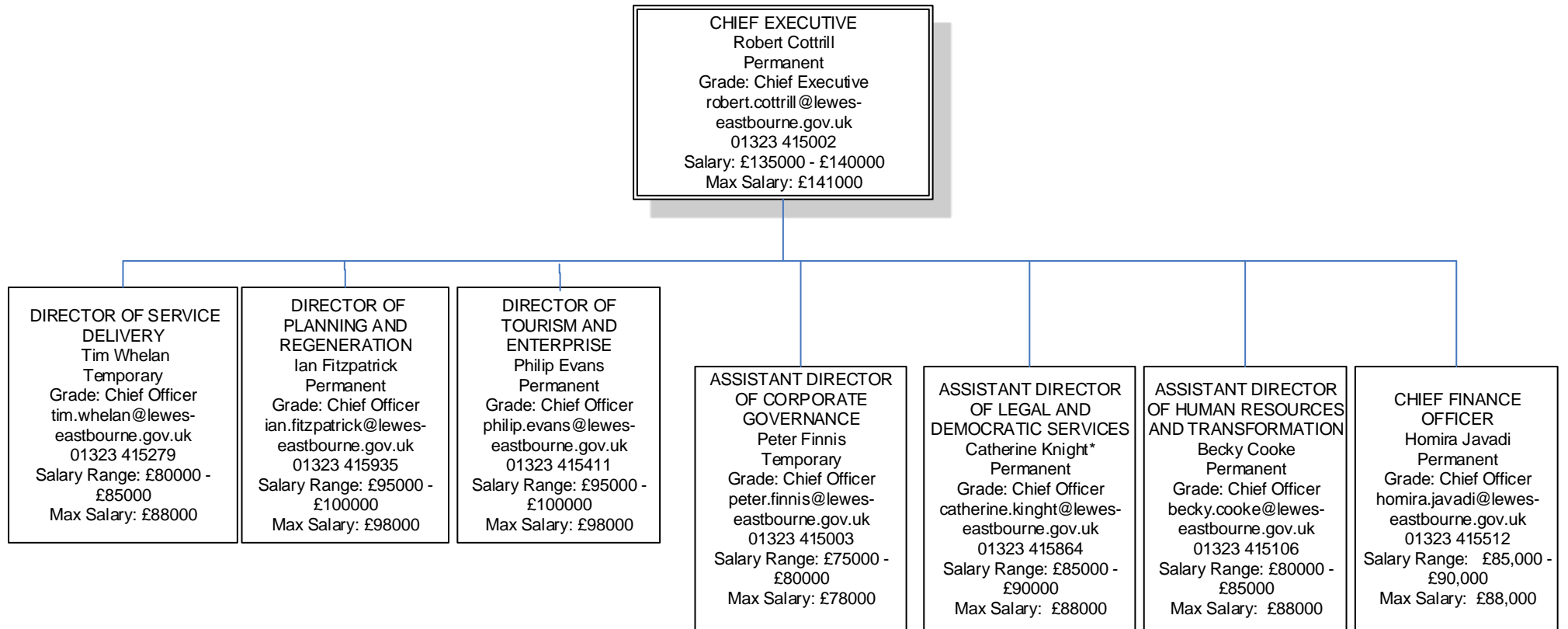


Lewes District and Eastbourne Borough Councils

TOP THREE TIER ORGANISATION CHART 2018

in compliance with *The Code of Recommended Practice for Local Authorities on Data Transparency*
This is a joint Corporate Management Team structure across Lewes District and Eastbourne Borough Councils



Note: Max salary rounded up to nearest whole figure

*The Assistant Director of Legal and Democratic Services is the only role currently employed by Lewes District Council. All other roles within this structure are employed by Eastbourne Borough Council