




Lewes District Council
LEWES DISTRICT POLICIES MAP
Inset Map 12: North Chailey





Key

-  District Boundary
-  Parish Boundary
-  Plan Area
-  Local Wildlife Site
-  Site of Special Scientific Interest
-  Local Nature Reserve
-  Ashdown Forest 7km zone

Lewes Core Strategy: Local Plan Part 1 (May 2016)

-  CP11: Conservation Areas

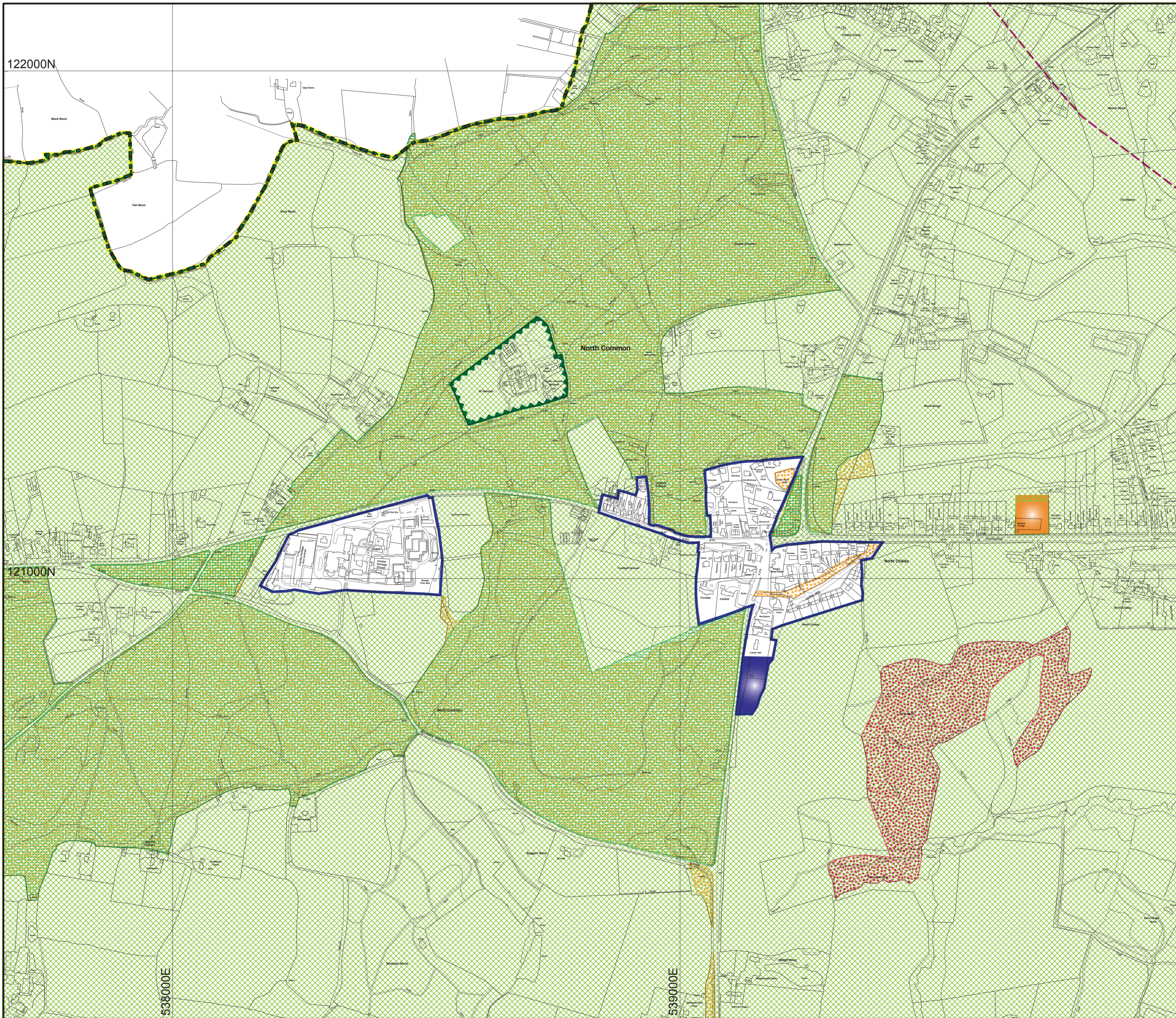
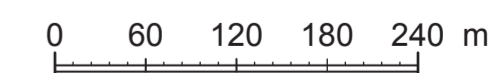
Lewes Local Plan Part 2 (December 2018)

-  DM1: Planning Boundary
-  Countryside Policies (*Policies DM2, DM3, DM4, DM5, DM6, DM7, DM9, DM10, DM11, DM12*)
-  CH01: Land at Glendene Farm, Station Road, Chailey
-  CH02: Land at Layden Hall, East Grinstead Road, Chailey



Date: December 2018

Scale: 1 : 5,000 @ A2



122000N

121000N

538000E

539000E