

# **Lewes Neighbourhood Development Plan**

## **Information Statement for Referendum on 7<sup>th</sup> March 2019**



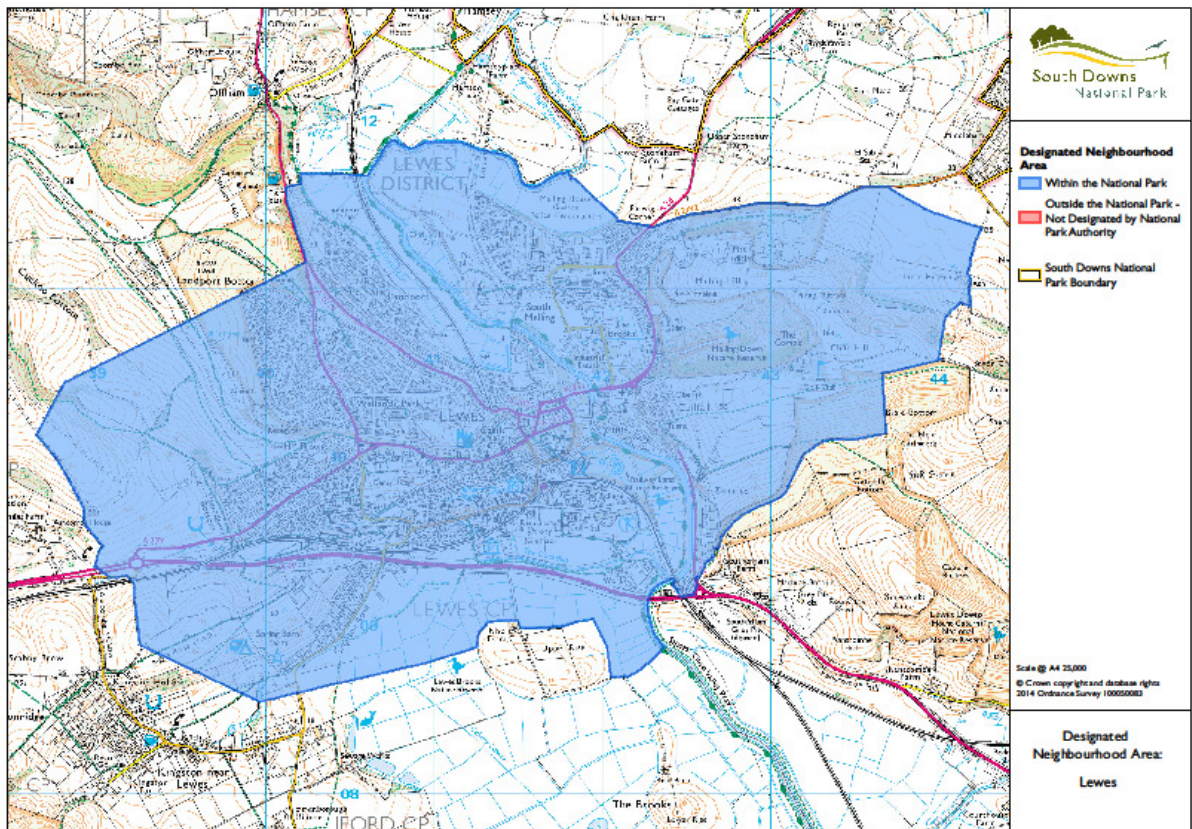
## Introduction

A referendum on the Lewes Neighbourhood Development Plan will be held on Thursday, 7<sup>th</sup> March 2019. The referendum will be conducted based on procedures which are similar to those used at local government elections.

The question to be asked in the referendum is:

**‘Do you want the South Downs National Park Authority to use the neighbourhood development plan for the Parish of Lewes to help it decide planning applications in the neighbourhood area?’**

The neighbourhood area is the entire area of Lewes and is marked on the map below (highlighted in blue):



## Can I vote?

You can vote in the referendum if you live in Lewes and:

- you are registered to vote in local council elections; and
- you are 18 years of age or over on Thursday, 7<sup>th</sup> March 2019.

You have to be registered to vote by 19<sup>th</sup> February 2019, to vote in the referendum. You can check if you are registered to vote by calling our Helpline on 01273 471600.

## **Referendum Expenses**

The Referendum expenses limit that will apply in relation to the Referendum is £3,101.09. The number of persons entitled to vote in the Referendum by reference to which the limit has been calculated is 12,527.

## **Specified Documents**

The relevant regulations state that we must make available the following documents:

- The referendum version of the Lewes Neighbourhood Development Plan
- The independent examiner's report on the draft Lewes Neighbourhood Development Plan
- A summary of the representations submitted to the independent examiner
- A statement setting out that the South Downs National Park believe that the Lewes Neighbourhood Development Plan meets the basic conditions and relevant Regulations (included within the document known as the Decision Statement)
- A statement setting out general information as to town and country planning (including neighbourhood planning) and the referendum (included within the 'Lewes Neighbourhood Development Plan: Voting Information for Referendum on 7<sup>th</sup> March 2019, document)

A link to these documents has been made available online at <https://www.southdowns.gov.uk/planning/planning-policy/neighbourhood-planning/neighbourhood-development-plans/lewes-neighbourhood-plan/>, a webpage that contains additional information about the Lewes Neighbourhood Development Plan.

Copies of the documents can also be viewed:

- Lewes Town Council's offices at the Town Hall, High Street, Lewes, BN7 2QS. The offices are open Monday to Thursday 9am to 5pm and Friday 9am to 4pm.
- South Downs National Park Authority offices, the South Downs Centre, North Street, Midhurst, West Sussex, GU29 9DH. The offices are open Monday to Thursday 9am to 5pm and Friday 9am to 4.30pm.