



Lewes District Council
LEWES DISTRICT POLICIES MAP
Inset Map 7: South Chailey

Key

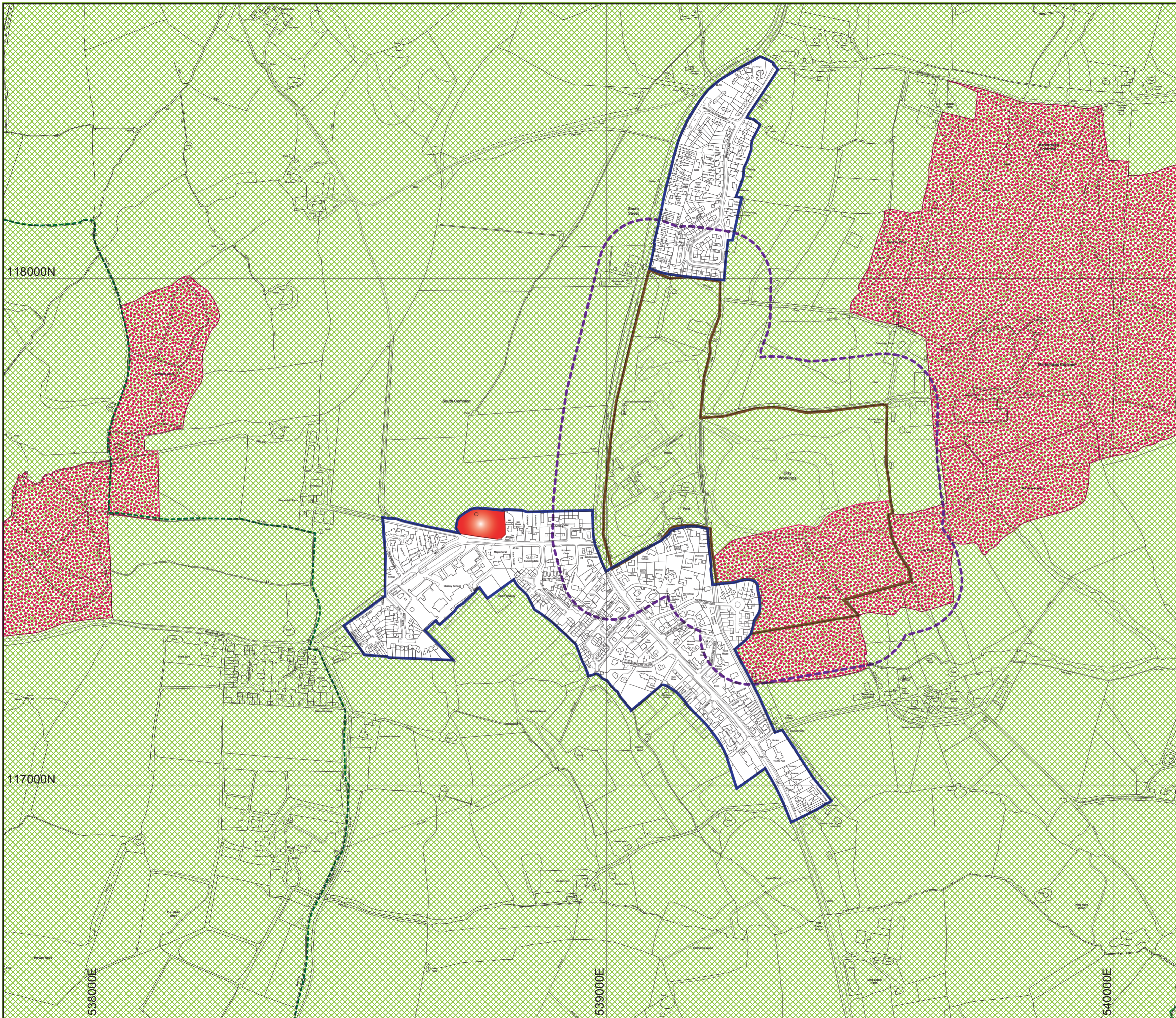
- Parish Boundaries
- Local Wildlife Site

Lewes Local Plan Part 2 (February 2020)

- DM1: Planning Boundary
- Countryside Policies (*Policies DM2, DM3, DM4, DM5, DM6, DM7, DM9, DM10, DM11, DM12*)
- CH03: Land at Mill Lane, Chailey (South)

East Sussex, South Downs and Brighton & Hove Waste and Minerals Local Plan

- SP8: Mineral Safeguarding Areas for land-won minerals resources within the Plan Area
- SP11: Minerals Consultation Areas



Date: February 2020

Scale: 1 : 5,000 @ A2

