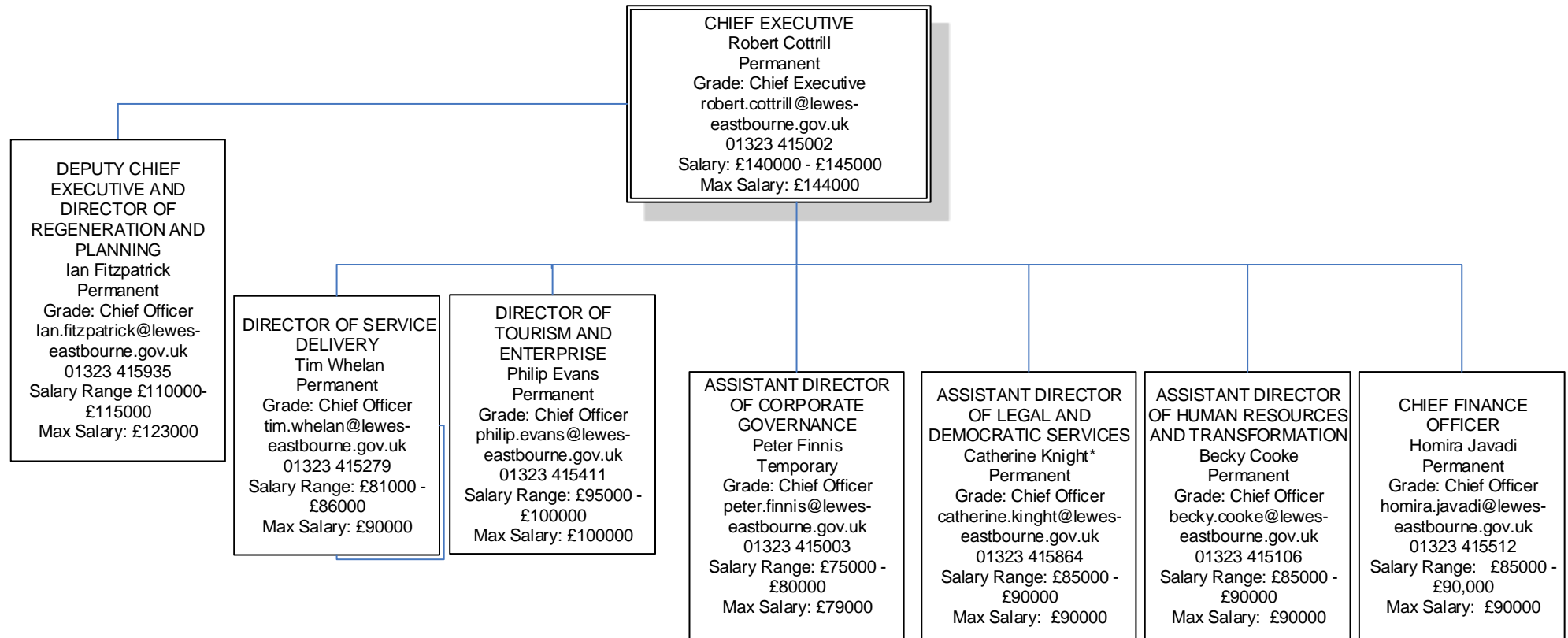


# Lewes District and Eastbourne Borough Councils

## TOP THREE TIER ORGANISATION CHART 2020

in compliance with *The Code of Recommended Practice for Local Authorities on Data Transparency*  
**This is a joint Corporate Management Team structure across Lewes District and Eastbourne Borough Councils**



Note: Max salary rounded up to nearest whole figure

\*The Assistant Director of Legal and Democratic Services is the only role currently employed by Lewes District Council. All other roles within this structure are employed by Eastbourne Borough Council