



Lewes District Council and South Downs National Park Authority

**Town & Country Planning Act 1990
Neighbourhood Planning Regulations (General) Regulations 2012**

Designation of Ringmer Parish as a neighbourhood area

Lewes District Council and South Downs National Park Authority received from Ringmer Parish Council, under Regulation 5 of the above Regulations, an application to designate the whole parish as a neighbourhood area for preparing a neighbourhood plan.

Comments were invited on the application between Monday, 18 June and Friday, 3 August. Under Regulation 7 of the above regulations and following the statutory consultation period, the District Council and National Park Authority have designated Ringmer Parish as a neighbourhood area in order to facilitate the preparation of a Neighbourhood Development Plan by Ringmer Parish Council.

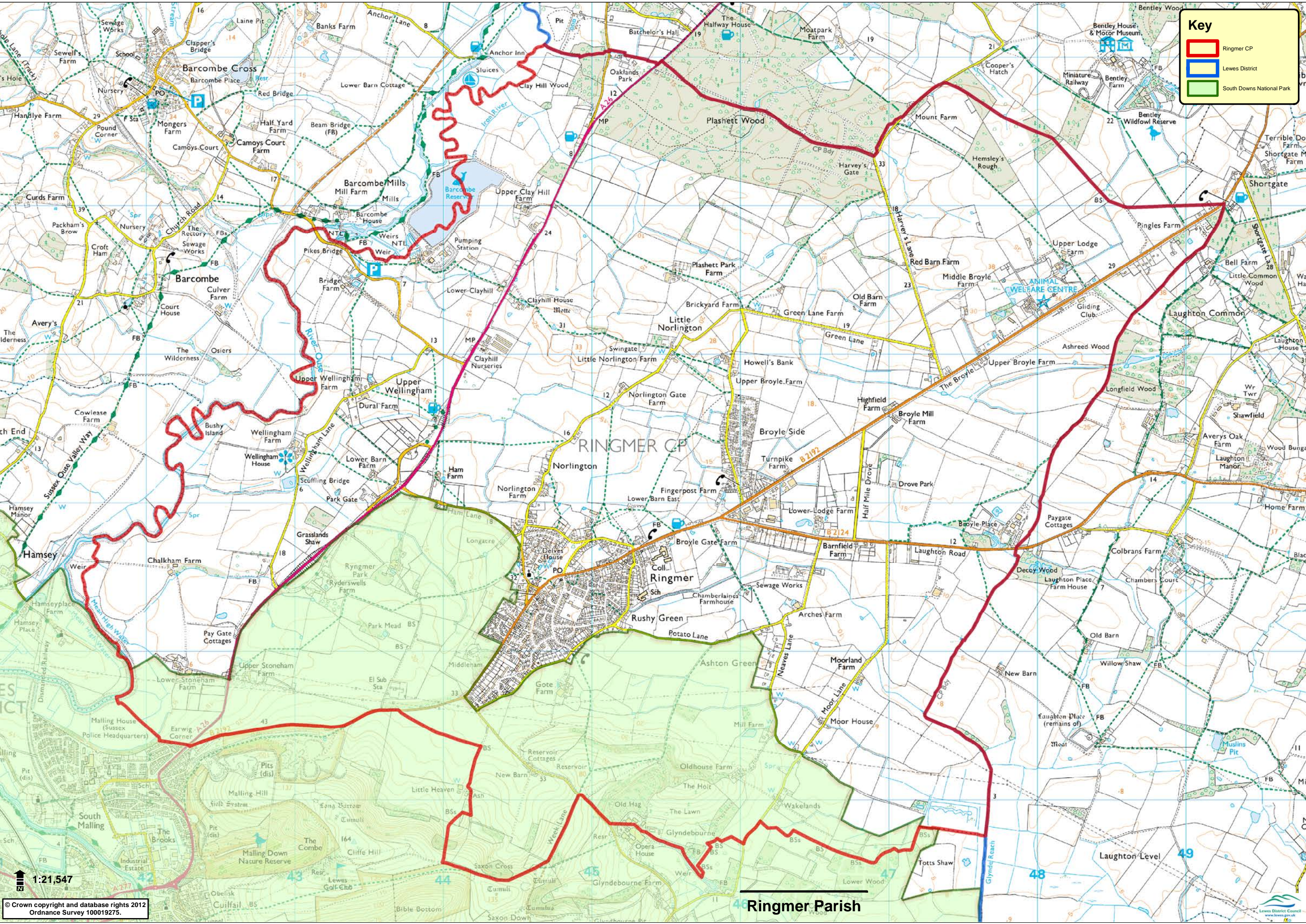
Lindsay Frost
Director of Planning & Environmental
Services
Lewes District Council

Councillor Tom Jones
Lead Member for Planning
Lewes District Council
South Downs National Park Authority

1 October 2012

Key

- Ringmer CP
- Lewes District
- South Downs National Park



1:21,547

© Crown copyright and database rights 2012
Ordnance Survey 100019275.

Ringmer Parish

Lewes District Council
www.lewes.gov.uk