

Climate and Nature Strategy 2024

Lewes District Council

Update Report 2023/24



Contents

District wide action	3
Greenhouse gas emissions in Lewes district- up to 2022	8
Greenhouse gas report for council operations	12
Introduction	12
Statement of Organisational boundary approach and baseline recalculation policy	13
Lewes District Council’s Scope 1 & 2 Emissions 2023-24	14
Scope 1 & 2 trends- 2018/19 to 2023/24	16
Consumption trends	17
Scope 3 Emissions	18
Pathways	19
Summary of progress against our targets	21
Sustainable Council	22
Case studies	23
Energy and the built environment	23
Case studies	25
Sustainable travel and air quality	27
Biodiversity.....	30
Case studies	32
Sustainable Food Systems	36
Case studies	36
Reducing waste and litter	39
Case study	40
Water, Rivers & Seas	41
Case studies	42
Community Wealth and Wellbeing	43
Case studies	44
Glossary.....	47
Action Plan	49

Introduction

Welcome to the first update of the refreshed Climate and Nature Strategy that was published in July 2024. This report provides an overview of all the amazing work and projects that have been going on in the district and at the council during the year 2023/24 and an update on the progress against our targets and net zero ambition. We provide some analysis into the greenhouse gas emissions of the entire district and a continuation of our reporting on the council's contribution to this.

The updated Climate & Nature Strategy was published around the same time the UK voted in a new government. As such the policy and strategy landscape is changing very quickly.

The new government has stated an intention to decarbonise power by 2030, decarbonise heat and develop adaptation policy, improve the energy efficiency of homes, expand nature rich habitats and improve access to the natural environment. There may be policy decisions that affect our local targets either way., In positive news, the last coal fired power station in the UK has finally ceased electricity production and over the summer more than half our electricity was provided by renewables, both major milestones in our pathway to net zero.

Our core aims:
1. Net zero council by 2030
2. At least 30% of the district is well managed for nature and protected by 2030
3. The wider district is becoming resilient to climate change and district emissions are reducing

DEFRA has stated 5 core priorities which align with our Climate & Nature Strategy:

- Cleaning up British rivers, lakes and seas
- Creating a roadmap to move Britain to a zero-waste economy
- Supporting farmers to boost Britain's food security
- Ensuring nature's recovery
- Protecting communities from flooding

However, housing development is being shaken up with new targets for increased house building being proposed and the 'opening up' of grey belt land.

We don't currently know the implications of all these changes, but this council will maintain focus on delivering against its Climate & Nature Strategy and will continue to lobby Government for the benefit of our residents and environment.

District wide action

The council's contribution to district wide emissions is less than 1% though we have a wider impact through our purchasing and outsourcing of activities (scope 3 emissions). The council does however have wider influence by setting and enforcing policy, for example with regards to housing. The council can also lobby for national and regional change, has weight and influence with regards to holding polluters such as water companies to account, and can enable and support community groups and local people to make positive changes with regards to personal well-being and the environment. We are lucky in Lewes district to have a vast number and range of volunteer and

community organisations working to benefit the district. Smaller local changes all add up and can make a big difference to people’s lives as well as contribute to global climate nature action.

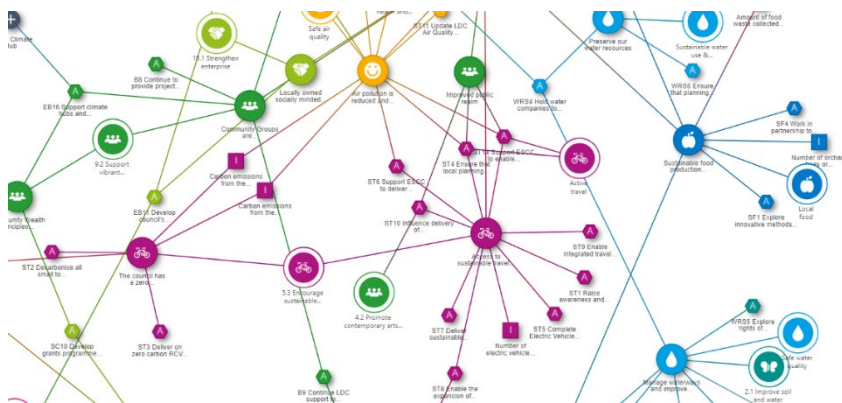
The council recently held a partnership event to provide a networking opportunity for our local groups and to share progress towards the goals of the recently refreshed climate and nature action plan, share opportunities and support one another on their net zero journey.

More than 20 community groups were represented. The inaugural event at Marine Workshops in Newhaven also gave an opportunity for group representatives to learn about the council’s progress on its own actions within the Nature and Climate Strategy and input into others strategies.

Attendees at the event represented a range of community groups including climate hubs, green networks, the food partnership, community partnerships such as Ouse Valley Climate Action, wildflower, community gardening and tree planting groups, town & parish councils, sustainable travel-groups, voluntary action organisations and river protection groups.



The council has been taking part in a project with the South Downs National Park and OnePlanet to map out the climate action strategies and action within the national park’s boundary to better monitor all the work that everyone is doing and see how it all links up as shown by the graphic below. We hope to be able to map projects as well and the Partner event introduced many of our partners to this work. This could help us to see how all our work really is making a difference and enabling action throughout the district whilst also supporting groups in their own work and bids for grant funding as this project can demonstrate how we are all working together for the benefit of the district and the wider region.



Further district and community wide action is being co-ordinated by our partners across our strategic theme areas. A few examples of this work are provided below and many more case studies are included throughout this document under the action plan themes below.



Lewes Climate Hub CIC - Putting climate action at the heart of our community

This year, Lewes Climate Hub continued to host a rolling programme of weekly events at its premises at Lewes House on the High Street. Over 3,000 visitors were welcomed to exhibitions, talks, climate workshops, coffee mornings and family activities, drawing deeply on the expertise of the Hub's growing network of 'partner groups' whose local community activities are showcased and signposted throughout the Hub.

A principal aim of the Hub is to inspire practical action on the climate and nature emergency. Last winter featured a season on retrofitting homes for energy efficiency (including those in conservation areas – a key concern for Lewes). In February 2025, 'Rethink Rubbish' showed how we can all cut down on waste and plastic pollution.

A series of Green Money talks in April explored how to make our finances better for the planet. In spring 2024, 'Taking Steps for Wildlife' provided a wealth of fascinating facts and practical guidance on planting trees, growing wildflowers and supporting local bee and Swift populations.

In July, Our River, Our Sea! explored the diversity of wildlife dependent on our waterways – and what steps we can all take to help it to flourish. Autumn and winter 2024 will explore climate justice, supporting local, seasonal food, greening your business, the launch of the Lewes Home Retrofit Guide and the latest developments in home solar energy and heat pumps.

The Climate Hub also worked closely with organisations across Lewes. For example, pupils and teachers of Western Road Primary took over the Hub for a Saturday in February to showcase their work to encourage nature in school grounds. And by holding regular People's Assemblies, the Hub continues to capture local people's thoughts on topics from safeguarding our water to making local food accessible for everyone, which are fed through to councils to help inform policy.



www.lewesclimatehub.org



Sharing Skills CIC - Sustainable Seaford Fair

In the last year, as well as running the Seaford Repair Cafe & Community Lunch, Preloved school uniform exchange and community gardening at the flowerbeds by Morrisons, Sharing Skills has been working with the Seaford Head School Climate Leaders to create a vegetable garden for the students to learn how to grow food. We decided to hold a sustainability fair, and the school agreed to work with us. On one of the few days in June when it luckily didn't rain, over 60 local environmental and community groups joined us at the school to provide activities to promote environmental awareness. We also had local sustainable businesses, food from Sharing Skills served by fantastic volunteers and La Squadra Della Pizza. Community Chef gave cookery demonstrations all day sharing the amazing food they made. We had talks presented by the UNA Climate & Oceans Youth Cabinet, recycled artwork by the school and music provided by Seaford Head Schools many talented bands and performers and by local band - Music from the Sofa. There were tours of the Farm Club animals and the vegetable garden. Students made smoothies and sold homemade cakes and plants. Parents organised a free clothes swap which was very popular as was the assisted bike rides and bike skills provided by Wheels for All and Bikeability. We were proud that there was hardly any rubbish at the end of the day - reusable cups and plates were used and food waste and napkins were collected for composting. We had amazing volunteers washing up. It was great to see so many children and young people at the fair. We had around 1000 visitors. Thank you to OVCA and the National Lottery for helping to fund the fair. Plans are underway to hold another fair at the school next year.



It was great to see so many children and young people at the fair. We had around 1000 visitors. Thank you to OVCA and the National Lottery for helping to fund the fair. Plans are underway to hold another fair at the school next year.



3VA - Supporting climate action in Lewes District

3VA supports voluntary and community and social enterprise groups throughout Lewes District.

3VA is a partner of Ouse Valley Climate Action (OVCA) and previously played a role in coordinating the Lewes District Climate Action Forums. In October 3VA facilitated a training workshop on involving and engaging volunteers, in partnership with OVCA.

As part of OVCA, 3VA has supported a wide range of groups working with their local communities to address climate change including Lewes Climate Hub with choosing a group structure, Lewes Railway Land Wildlife Trust with volunteering support, Common Cause Co-operative with linking into other groups, and Seaford Environmental Alliance with starting a community group. 3VA has also worked with Gardening in Action to produce an online webinar to help groups with setting up Choosing structures for community groups.

This year at our annual Celebrating Communities event which recognises the achievements of community groups across Lewes District, Eastbourne and Wealden, we were delighted to welcome the Lord Lieutenant of East Sussex who presented a certificate of recognition to Lewes Climate Hub who were the inaugural winners of our category 'Recognising the benefits and impacts groups have made in supporting climate change'

To get in touch, please email info@3va.org.uk

Dinah Morgan from Lewes Climate Hub receiving a certificate of recognition from the Lord Lieutenant of East Sussex at 3VA's Celebrating Communities 2024. Photo credit: Alice Denny.

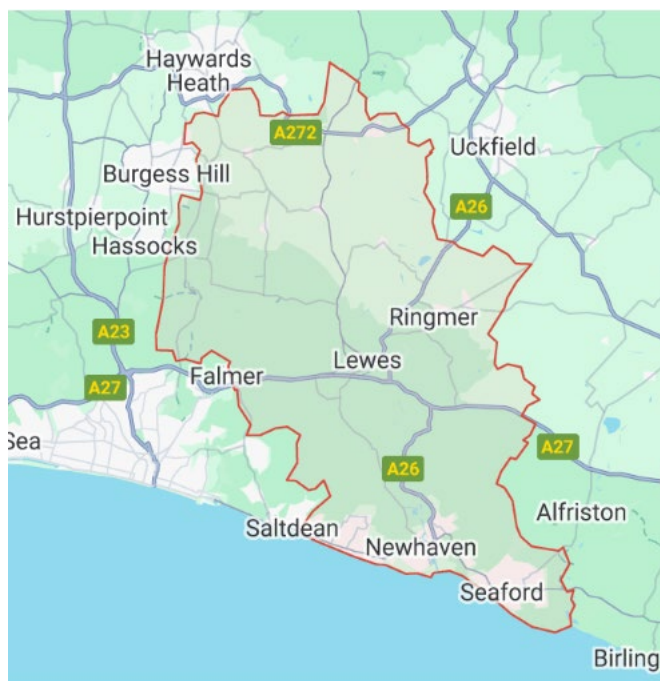


East Sussex County Council have provided us with the following headlines relating to their current activity-

- 1) Reducing corporate carbon emissions, including from schools: [Climate Emergency Plan 2023-25 | East Sussex County Council](#)
- 2) Co-ordinating delivery of the county's fuel poverty programme: [Keep warm and well | East Sussex County Council](#)
- 3) Developing the next Local Transport Plan for the county: [Local Transport Plan 4 | East Sussex County Council](#)
- 4) Implementing a number of bus service improvements, including lower fares and flexible services: [Bus Service Improvement Plan | East Sussex County Council](#)
- 5) Helping residents to buy solar panels: [Solar Together Sussex | East Sussex County Council](#)
- 6) Planning the roll-out of on-street electric vehicle charge points, with £4.4m of government funding: [Funding could deliver 2,000 EV charging points | The Newsroom \(eastsussex.gov.uk\)](#)
- 7) Delivering energy training for school site managers: [Reducing energy use and carbon emissions in schools | East Sussex County Council](#)
- 8) Funding community carbon literacy training: [Climate Literacy Training - Community Energy South](#)
- 9) Leading on the development of the Local Nature Recovery Strategy, working with a wide range of stakeholders: [Sussex Nature Recovery | Sussex Nature Recovery](#).

Greenhouse gas emissions in Lewes district- up to 2022

This first section of our update report provides an overview of greenhouse gas emissions generated across the whole of Lewes district, this area is shown in Map 1, and covers an area just over 294km². The district is home to around 100,000 residents.



Map 1. The district of Lewes, its major towns and roads within its boundary

The district has emitted 398.8ktCO₂e of greenhouse gases in 2022, the most recent data set published by the Department for Energy Security & Net Zero (DESNZ)¹. It should be noted that these district figures do not include scope 3 emissions, such as goods purchased. As with the council emissions this would form a very

Greenhouse gas emissions are reported as kilo tonnes of carbon dioxide equivalents, represented as ktCO₂e.

substantial part of total emissions and it is challenging to measure and report. We will consider reporting this figure next year once we have had a chance to review the options and issues.

These greenhouse gas emissions are from a range of sectors as illustrated in the pie

chart (graph 1) below, showing across the district the top 3 sources are from transport (37%), the domestic sector (32%) followed by agriculture (14%). Lewes district is semi-rural in nature which may account for the high level of transport use and agricultural emissions.

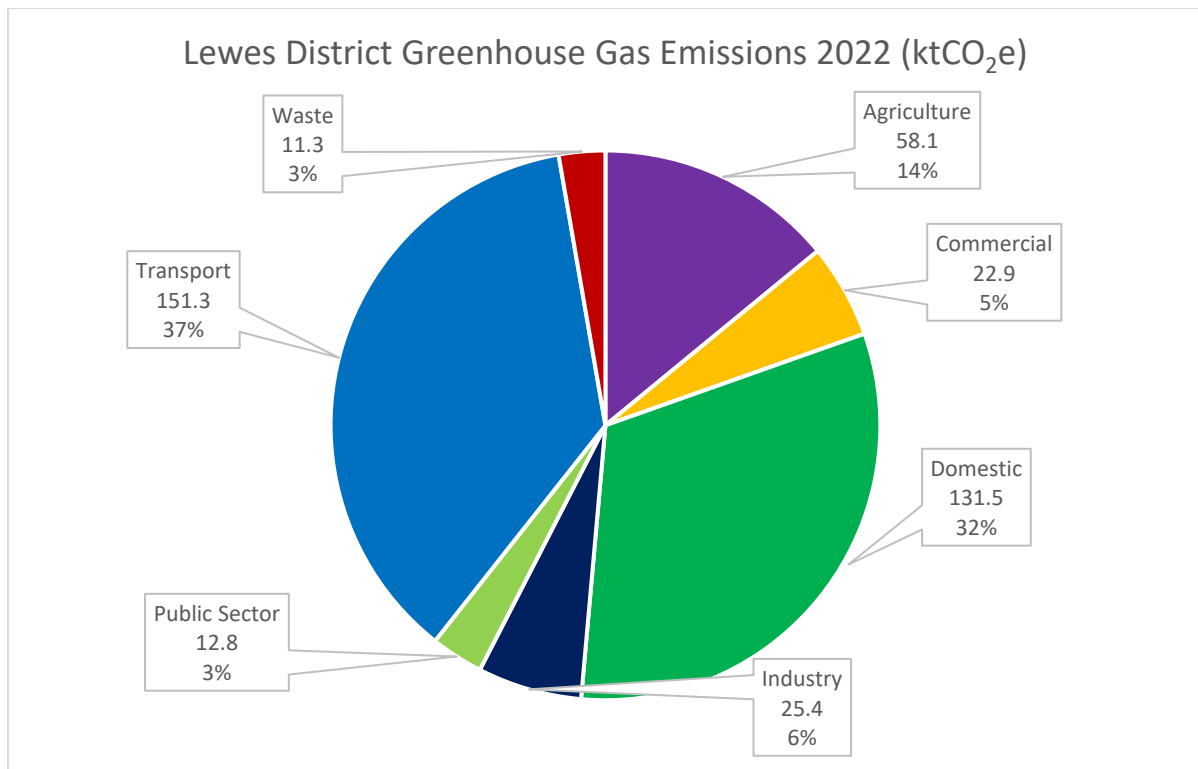
Emissions can be tracked back to 2005, the first national data set for district wide emissions. The graph 2 below shows there has been a consistent reduction in greenhouse gas emissions in Lewes district to 2022, the most recent data available.

From the strategy baseline year of 2018, Lewes district has reduced its greenhouse gas emissions by 17.6%, a total reduction of 85.9ktCO₂e over 4 years.

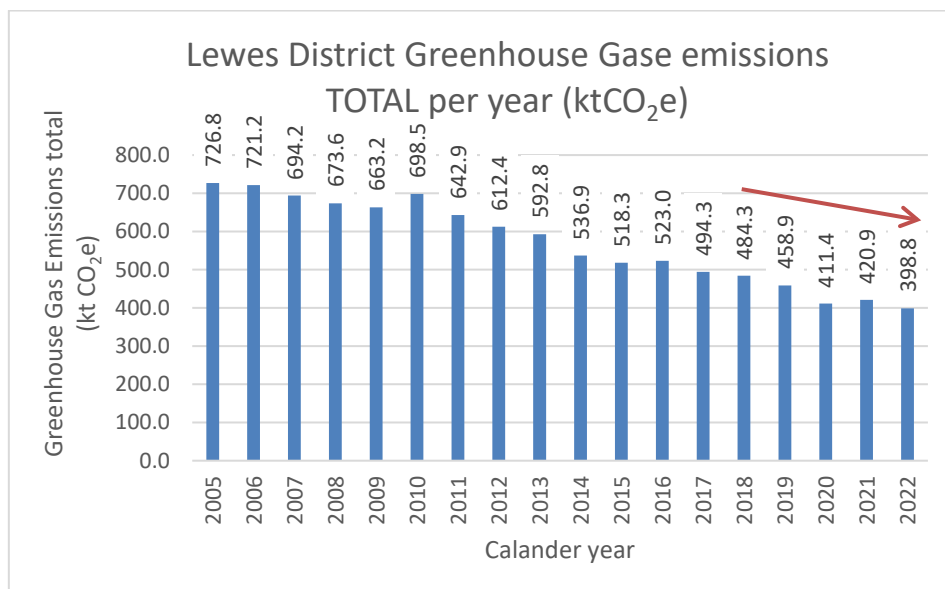
Exploring the data in detail and by sector (graph 3) shows that the emissions change year-on-year since 2018 has not been steady. In Lewes district there was a sharp decrease of total emissions by 10% from 2019 to 2020, coinciding with the start of the COVID pandemic. The most prominent sector specific change from 2019 to 2020 came from a reduction in transport greenhouse gas emissions of 18%, equivalent to a reduction of 32 ktCO₂e.

¹ [UK greenhouse gas emissions: local authority and regional - data.gov.uk](https://www.data.gov.uk/dataset/723c243d-2f1a-4d27-8b61-cdb93e5b10ff/uk-greenhouse-gas-emissions-local-authority-and-regional)
<https://www.data.gov.uk/dataset/723c243d-2f1a-4d27-8b61-cdb93e5b10ff/uk-greenhouse-gas-emissions-local-authority-and-regional> (link from 28/08/2024)

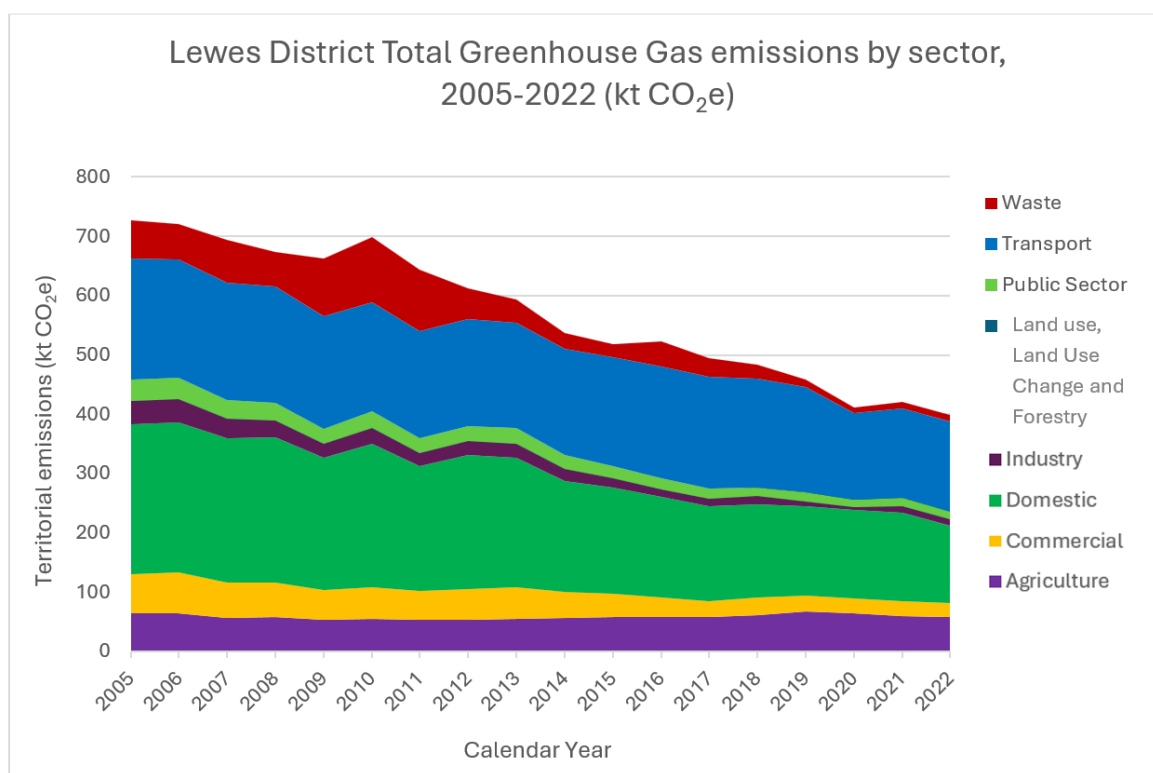
Graph 1. Lewes District wide Greenhouse Gas Emissions 2022



Graph 2. Lewes District Greenhouse Gas Emissions 2005-2022



Graph 3. Lewes District total emissions by sector 2005-2022



In 2021 emissions increased, mirroring personal behaviours as lock down ceased and socialising/travel returned, after the peak of the COVID pandemic. Although less than pre-pandemic levels the total emissions increased by over 14ktCO₂e, primarily from transport (7ktCO₂e) and industry (6ktCO₂e) followed by commercial and public sector by 1ktCO₂e each. By 2021 people were starting to return to work places which may account for some of the increase in emissions from these related sectors and the economy was starting to move again.

The final year of data shows a fall of 5% greenhouse gas emissions from 2021 to 2022. Most of the reduction is from the domestic sector with 17ktCO₂e of which over two thirds are a result of reduced gas emissions. It is possible this reduction is part of the cost of living crisis which started in late 2021 and saw energy and household bills increase faster than incomes. This has resulted in many households trying to save money and may involve reducing the heating of homes.

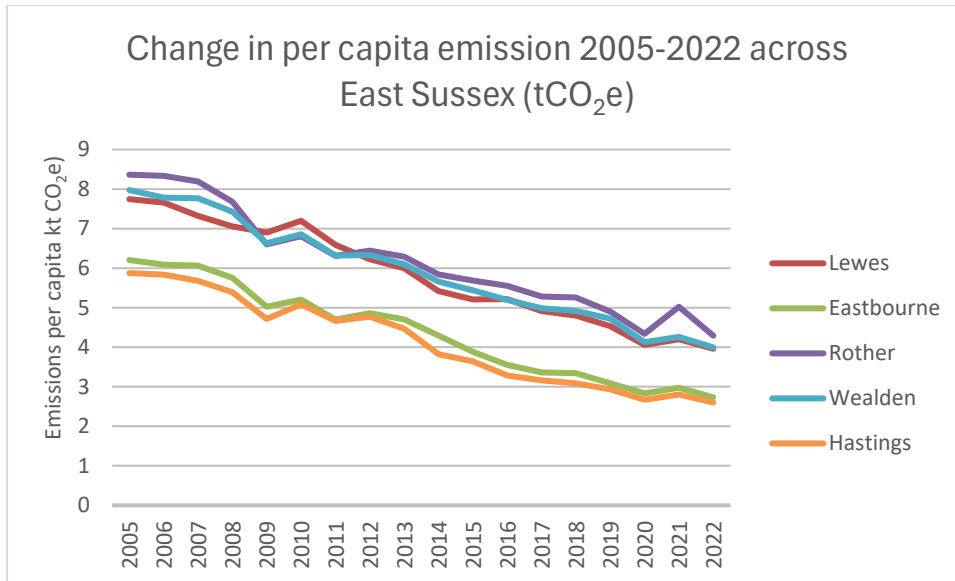
Waste sector emissions have been low at 10ktCO₂e in 2021 and there is an increase again to 11ktCO₂e for 2022.

Lewes district is comparable in total per capita greenhouse gas emissions with the other 3 rural districts in East Sussex. In 2022 Lewes district alongside Rother and Wealden emitted circa 4.1 tCO₂e per capita in year. All three have transport, followed by the domestic sector as their top two sources of greenhouse gas emissions in 2022. The high transport emissions reflect their large rural geographical spread, compared to the urban areas of Eastbourne and Hastings, where Hastings is only 3% the size of the mostly rural Wealden district.

The three more rural districts of Lewes, Rother and Wealden form a trend from 2005 to 2022 having consistently higher per capita greenhouse gas emissions than Eastbourne and Hastings as seen in graph 4. Although agriculture is the third largest emitter in the three boroughs, Rother had industrial emissions 63.6 ktCO₂e in 2022 as its third largest source and is the greatest in East Sussex.

Eastbourne and Hastings emitted 2.5 tCO₂e greenhouse gas emissions per capita in 2022, nearly half the three other districts. Their socio-economic position is a prominent factor, as the boroughs are within the top 10% most deprived areas in the country². Highlighting lower income has had an impact on residents using less power and heating, particularly during the COVID period from 2019 to 2020. Their urban profile also reduces the high emission contributions from agriculture and industry, replaced with the commercial sector as the third highest contributor of greenhouse gas emissions in the two boroughs of Hasting and Eastbourne.

Graph 4. Change in per capita emissions across East Sussex 2005-2022



² <https://www.gov.uk/government/statistics/english-indices-of-deprivation-2019>

Greenhouse gas report for council operations

Introduction

To date we have calculated carbon emissions using the Greenhouse Gas (GHG) Protocol methodology and the appropriate annual conversion factors for each year issued by the Department for Business, Energy and Industrial (BEIS), now Department for Energy Security and Net Zero (DESNZ). By using this method and these figures we have ensured that the organisational emissions we measure can be reported accurately every year to 2030 using a robust and reliable process.

Please review the [GHG Protocol guidance](#) for more information.

Our data and report here is set out using best practice from this document- [Environmental Reporting Guidelines: Including streamlined energy and carbon reporting guidance \(2019\)](#)

Lewes District Council has used the 'operational control' approach to define the organisational boundary and to inform the emissions inventory boundary described in the table below.

Category	Description of emissions boundary	Data used in this analysis
Scope 1	Direct emissions from sources owned or controlled by Lewes District Council	Metered gas data (for buildings where the Council pay the gas bills) Litres of fuel consumed for fleet vehicles
Scope 2	Indirect emissions from the generation of energy purchased by Lewes District Council	Metered electricity data (for buildings where the Council pay the electricity bills)
Scope 3	Indirect emissions that result from other activities that occur in the value chain, either upstream or downstream.	Data has varied but includes: staff mileage, water consumption, fuel consumed by some contractors (housing and parks)

The council is deemed to have operational control if it has full authority to introduce and implement its operating policies at the operation. This approach does not require the council to own the asset.

It should be noted that with regards to metered gas and electricity, all sites, regardless of who operates the site, have been considered to be in scope 1 or 2 if the council is responsible for paying the bills (even if these costs are re-charged) AND for maintaining the premises. Where these conditions are not met the sites were reported within scope 3, for example Wave Leisure facilities.

Scope 1 and 2 emissions within the organisational boundary and are considered to be directly controllable by the Council.

As part of the 2024 refresh and the production of the Climate and Nature Strategy 2024 it was deemed necessary that the methodology for the accounting of carbon emissions should be reviewed. We have also reviewed the majority of assets for their operational status (including lease arrangements) as the operational status of many buildings the council owns has changed over the last few years. Our approach and data is set out below.

Statement of Organisational boundary approach and baseline recalculation policy

Organisational boundary

The council will use the operational control approach with regards to its direct scope 1 and 2 emissions. This means that we include 100% of the direct greenhouse gas emissions from operations over which we have control. We do not include emissions from operations in which we have an interest but have no control.

With regards to indirect scope 3 emissions the council has some discretion over what it reports. If the council has an operational or a financial interest then the emissions shall be reported under scope 3 **where the data can be collected reliably**.

For example:

- Wave Leisure runs our leisure centres. We have an interest in these facilities but do not have full operational control as we have OUTSOURCED the service. **Scope 3**
- We own buildings but do not occupy them (we are the landlord). **Scope 3**
- We own a building and run a service from it. **Scope 1, 2 and 3**
- We lease a building and run a service from it. **Scope 1, 2 & 3**
- We have purchased some stationary supplies. **Scope 3**

Baseline recalculation policy

Retroactive recalculation of the base year emissions will be completed when changes occur that could compromise the consistency and relevance of emissions data.

We will recalculate for:

- changes in structure of the organisation
- significant changes in calculation methodology
 - improved emission factors
 - improved activity data
- discovery of significant errors or smaller errors that are collectively significant

We will use a significance threshold of 10% to trigger a recalculation.

We will not recalculate the baseline where the following applies:

- changes involving facilities that did not exist in the base year
- outsourcing/in sourcing of activities previously reported under a different scope
- organic growth or decline

Lewes District Council’s Scope 1 & 2 Emissions 2023-24

The table below is the formal annual emissions report for scope 1 and 2 sources of emissions for Lewes District Council. This report is our way of monitoring our progress to Net Zero by 2030 and is in a format suggested for use by the government. [Environmental Reporting Guidelines: Including streamlined energy and carbon reporting guidance \(2019\)](#)

We have used the following data set for our 2023/24 carbon factors: [UK Government GHG Conversion Factors for Company Reporting June 2023](#)

	Current year 2023/24 (UK)	Comparison reporting (base) year 2018/19 (UK)
Scope 1 emissions		
Gas	320	360.5
Diesel	617	870.9
Hydro-treated Vegetable Oil (HVO)	2	0
Electricity generation from PV panels ¹	0	0
Scope 2 emissions		
Purchased Electricity (location based)- grid average	260	358.4
Total annual gross Scope 1 & 2 emissions (tCO₂e/year)	1199	1590
Purchased green tariff electricity (market-based) ²	-260	0
Total annual net Scope 1 & 2 emissions (tCO₂e/year)	939	1590

¹The council has solar PV panels on installed on offices and housing. During 23/24 approximately 1,346 MWh for the reporting period, of which 100% was exported to the grid. Because we generate electricity we have to disclose the carbon emissions from this generation, as it is from PV we have zero emissions.

²The council purchased all its electricity from npower. We use their UK Business Renewable tariff. This tariff is REGO backed and fully compliant with WRI GHG Protocol Scope 2 Guidance and has an Eco-Act assurance stamp. This tariff enables us to reduce our emissions from the consumption of purchased electricity by 100%. This equates to a saving of 260 tonnes CO₂e per year.

For information, the table below provides the energy consumption used to calculate above carbon emissions:

	Current year 2023/24	Comparison reporting (base) year 2018/19
<i>Gas</i>	<i>1,778,010 kWh (gross CV)</i>	<i>1,960,291 kWh (gross CV)</i>
<i>Diesel</i>	<i>245,494 litres</i>	<i>332,527.75 litres</i>
<i>Hydro-treated Vegetable Oil (HVO)</i>	<i>44,911 litres</i>	<i>0 litres</i>
<i>Electricity generation from PV panels¹</i>	<i>1,346,000 kWh</i>	<i>Unknown</i>
<i>Purchased Electricity</i>	<i>1,256,385 kWh</i>	<i>956,037 kWh</i>

The 2019 guidelines recommend organisations provide an ‘intensity’ ratio within their carbon reporting. Essentially this is an amount of carbon emissions assigned to a unit relevant to the organisation, this may be a unit of product, per member of staff or, as we and other local authorities have chosen to use, a per head of population figure. Our intensity ratio is below:

	Current year 2023/24	Comparison reporting (base) year 2018/19
Intensity ratio: tCO ₂ e (gross scope 1 & 2) per head of population of Lewes district	0.012 tonnes per resident ²	0.016 tonnes per resident ³

²[Population estimates briefing, Feb 2024 \(eastsussexjsna.org.uk\)](https://www.eastsussexjsna.org.uk)

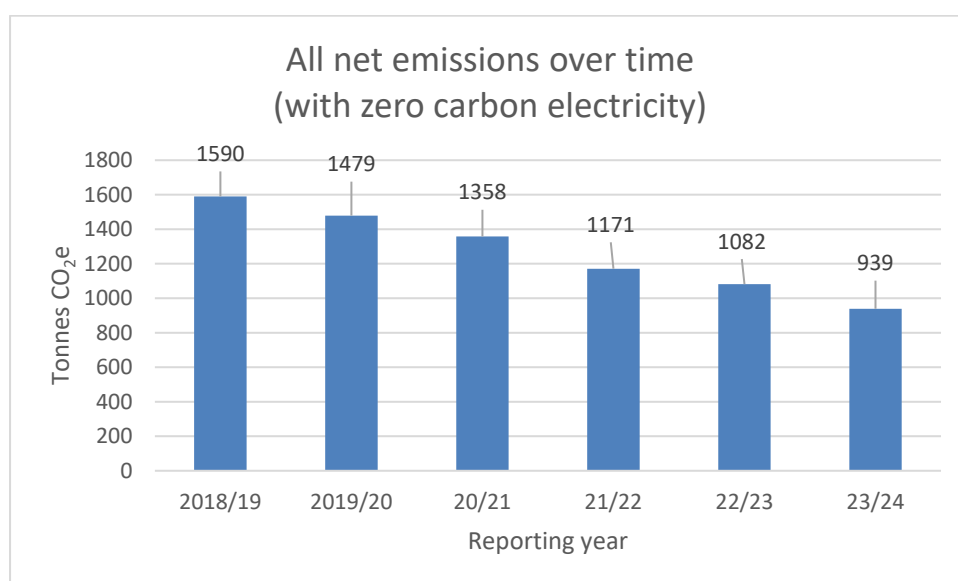
³Population estimate taken from 2018/19 statement of accounts (based on 2018 ONS estimates) [2018 to 2019 Statement of Accounts Lewes District Council.pdf \(lewes-eastbourne.gov.uk\)](https://www.lewes-eastbourne.gov.uk/2018-to-2019-statement-of-accounts-lewes-district-council.pdf)

Scope 1 & 2 trends- 2018/19 to 2023/24

As shown by graph 5 below the council's carbon emissions have reduced by **41%** since 2018/19. This has been achieved through the procurement of certified 'good quality' green tariff electricity from October 2021, and a rationalisation of its office accommodation that has occurred since 2020 as homeworking became more available to employees. The council has also worked to reduce the mileage of its waste fleet which has in turn also reduced emissions as reported in previous years' carbon updates.

We acknowledge that by enabling homeworking the council has likely increased domestic emissions as our staff heat and power their homes more than they would have done otherwise. We have estimated this and included it in our scope 3 emissions as these emissions are no longer within our direct control.

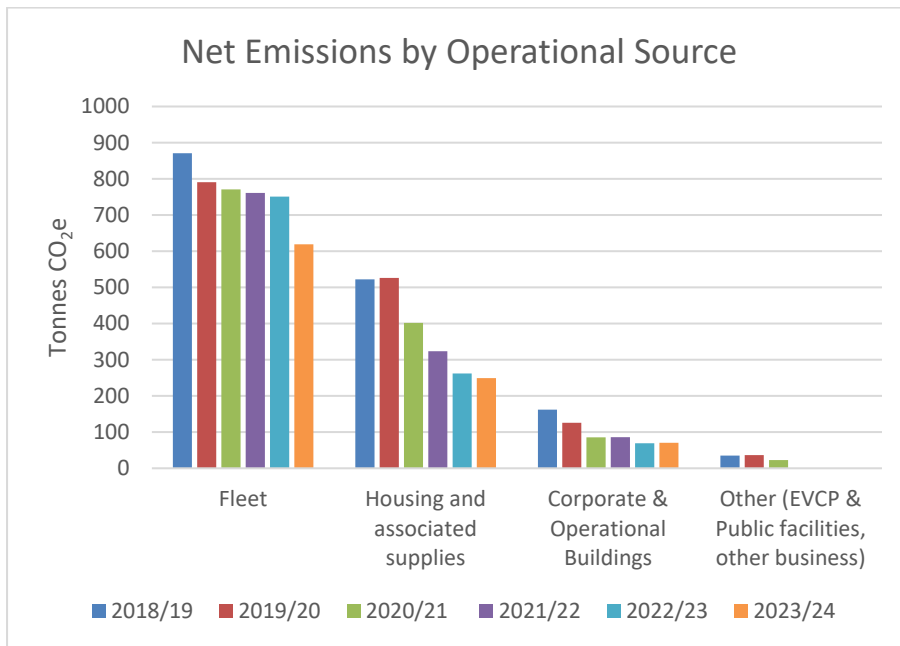
Graph 5. Council net emissions over time



As shown by graph 6 fleet continues to form the bulk of the council's net carbon emissions at 66% with our communal electricity and gas supplies for our housing stock forming 26.5%. Office buildings form just 7.5% of our net emissions.

In early 2024 we transferred our fleet vehicles to HVO (Hydrotreated vegetable oil), we have been able to do this because all our Lewes diesel fleet vehicles refuel via an on-site fuel tank - we anticipate this making a substantial reduction in fleet emissions for the 24/25 reporting year. We have illustrated this estimated reduction in the 'Pathways' section of this report.

Graph 6. Net emissions by operational source

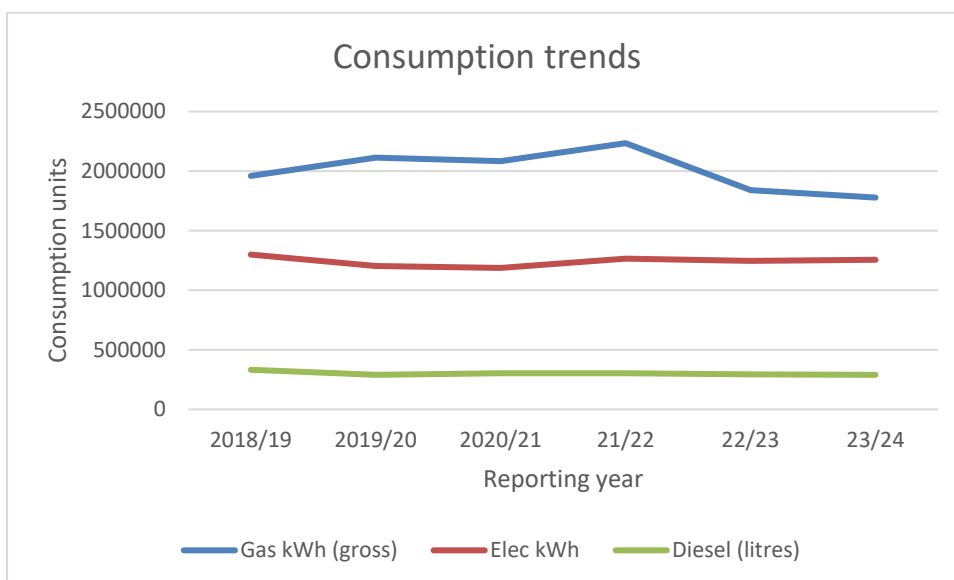


Consumption trends

Graph 6 illustrates the consumption trend of gas, electricity and fuel. Reducing consumption should always be the first thing we do prior to decarbonisation measures as it reduces gross carbon emissions and potentially makes the work cheaper and easier.

Overall, since 2018/19 the council has enabled a reduction of 13% in fuel consumption (litres) through mainly route optimisation measures. A 9% reduction in gas (kWh) consumption and a 3% reduction in electricity consumption has occurred. This has occurred mainly through building stock rationalisation whilst gas use may also reflect weather and temperature seasonal variability.

Graph 6. Consumption trends



Scope 3 Emissions

Our scope 3 (indirect) emissions are reported in the table below. We will look to review our methodology for reporting scope 3 over the next 12 months, including the potential to include emissions from our housing stock (currently this sits within the domestic emissions reported as part of district wide data). It will however continue to be an evolving area of reporting as we develop and introduce new methods to capture more data, implementation of the new sustainable procurement policy will further enable this as new contracts are procured and required to disclose carbon information.

Source	Data source	2018/19	2019/20	2020/21	2021/22	2022/23	2023/24
Electricity Transmission & Distribution losses	Utilities consumption information	30.52	25.54	23.42	23.78	22	22.51
Water use- supply & treatment	Direct from utility company	N/A	13.9	19.5	9.6	5.3	8.93
Wave Leisure	Direct from consumption information (water, gas & elec)	953.5	945	365.5	763	705	666.53
Private Business Miles (staff and Cllrs)	Calculated using miles claimed and an average petrol car			28.4	20	22.6	21.95
Councillors- Taxis	'Regular Taxi km' based on spend (average costs)				0.02	0	0.00
Public transport (staff and Cllrs)	Estimated km based on spend (rail assumed)			0.39	0.82	0.13	0.08
Well to Tank (WTT) diesel fuel emissions	Based on actual consumption			185.3	184.8	179	150.00
Well to tank natural gas	Utilities consumption information			56.51	70	57	53.71
Grounds maintenance contract- fuel (consumption and WTT)	Diesel and unleaded petrol consumption				83.75	86.5	59.50
Housing maintenance contract- fuel (consumption and WTT)	Diesel and unleaded petrol consumption					130.79	138.79
Homeworking	Human Resources records- <i>currently an estimate- method to be reviewed for next year</i>						146
Total		984t	984t	679t	1155.77	1208.3	1267.7

Pathways

The council has carried out some basic modelling to visualise what we need to do reduce our scope 1 and scope 2 carbon emissions to the lowest level possible before we offset remaining emissions to meet our Net Zero by 2030 target. Modelling does not include our scope 3 emissions.

We have provided pathways for our gross emissions. This is to be transparent with regards to our electricity supply being netted off due to a purchased green tariff and allows a visualisation of the emissions based upon gross consumption. Some green tariffs can be considered greenwashing so it is important to progress reduction measures, on-site generation, heat networks and better purchasing of electricity, for example through a Power Purchase Agreement (PPA) direct with a renewable energy producer.

- As of January 2024 all council fleet vehicles refuel at Robinson Road depot and now use HVO (hydrotreated vegetable oil). This has reduced gross fleet emissions by 17.6 % this reporting year (23/24) but will show a substantial reduction next following year. We estimate this to be in the region of over 90% (using government conversion factors).
- Our Business as Usual (BAU) scenario assumes that we will continue to use HVO in our combustion engine vehicles until 2030, however in reality it is planned to be used as a transitional solution until we can transition fully to a new zero carbon (at tailpipe) fleet (such as electric or hydrogen, as the market and vehicle suitability dictates).
- We do not yet know what the consumption of HVO will be over a whole year though it looks like more fuel is consumed mile for mile when compared to diesel. Our modelling assumes a like for like consumption so may be under reporting in this regard but we will have more information next year.

We have modelled removal of gas consumption for heating purposes. This will need to be replaced by electrical heating or heat networks. Heat pumps are the replacement that could most likely be achieved before 2030 so is modelled in these scenarios, we note that there may be alternative solutions for specific areas or buildings but cannot yet model that impact. Moving to heat pumps will increase electricity consumption and we have modelled using air source heat pumps and a coefficient of performance (COP) estimate of 3. Although electricity consumption will increase, producing the heat requirement for a building using an air source heat pump with a COP of 3 will be three times more efficient than either direct electrical heating or by using gas (boiler efficiency of 85 %), so overall fewer kWh of heating energy should be consumed. Modelling assumes we have no gas backup, this is unlikely but we have not tried to estimate this at this time.

- We will need to ensure we continue to generate or purchase enough green electricity to cover the increase in consumption and be aware that as a result we will not hit our consumption reduction targets.

Of current gas consumption the majority, 78%, is used for the communal supplies within our social and sheltered housing, only 22% is used by our offices/corporate buildings. Our office gas consumption may initially increase for 24/25 as we have been increasing the use of our new multi-agency building the Marine Workshops, we have not estimated this potential increase or attempted to apportion these emissions according to the tenant (of which we (the council) are one). We will see if this apportionment is possible in 2025 as it will shift some emissions from this building into our scope 3.

We have assumed that installations of heat pumps will occur over several years and have included 18 months of planning from 2024. However, there is currently no budget for the decarbonisation of

heating project. Grants may arise, including future rounds of the Social Housing Decarbonisation Fund, and we are doing the ground work to enable this but cannot yet guarantee the timeline or the stepped reductions.

- The council should continue to reduce grid electricity consumption through on-site generation where possible and should continue to evaluate the potential of heat networks.

Any residual emissions at 2030 will need to be offset in order to reach our net zero by 2030 target. We currently have no method agreed for offsetting but this is being investigated at the local, regional and national level and is covered by action number SC15 within the action plan.

Gross emission pathways (see graph 7)

Pathway 1-this is our business as usual (BAU) pathway. We have now used HVO for a few months now and this pathway assumes we will continue to use it and will consume the same amount as we did diesel. It assumes we will use the same amount of gas heating as we did in 2023/24 and that grid electricity will increase as our vehicle fleet is electrified (as per currently funded proposals increasing the number of EV vehicles from 12 to 19). We do not reduce emissions for use of a green electricity tariff.

Remaining emissions at 2030 = 594.9 tonnes CO₂e

Pathway 2-this pathway models for our replacement of gas heating with air source heat pumps. Reductions start in 2026/27 with half of our corporate buildings having the gas heating replaced, 2027/28 as all corporate buildings converted and one third of housing stock communal supplies. 2028/29 sees another third of housing stock communal supplies converted with the final third being completed in 2029/30. This phasing has been put forward because it is most likely that corporate buildings will be easiest to tackle if corporate budget or grants allow the financial resources to be found. Housing communal supplies are likely to be logistically more challenging as these are within our sheltered accommodation blocks. Currently assumed electricity increases due to EVs is also included.

Remaining emissions at 2030 = 604.9 tonnes CO₂e

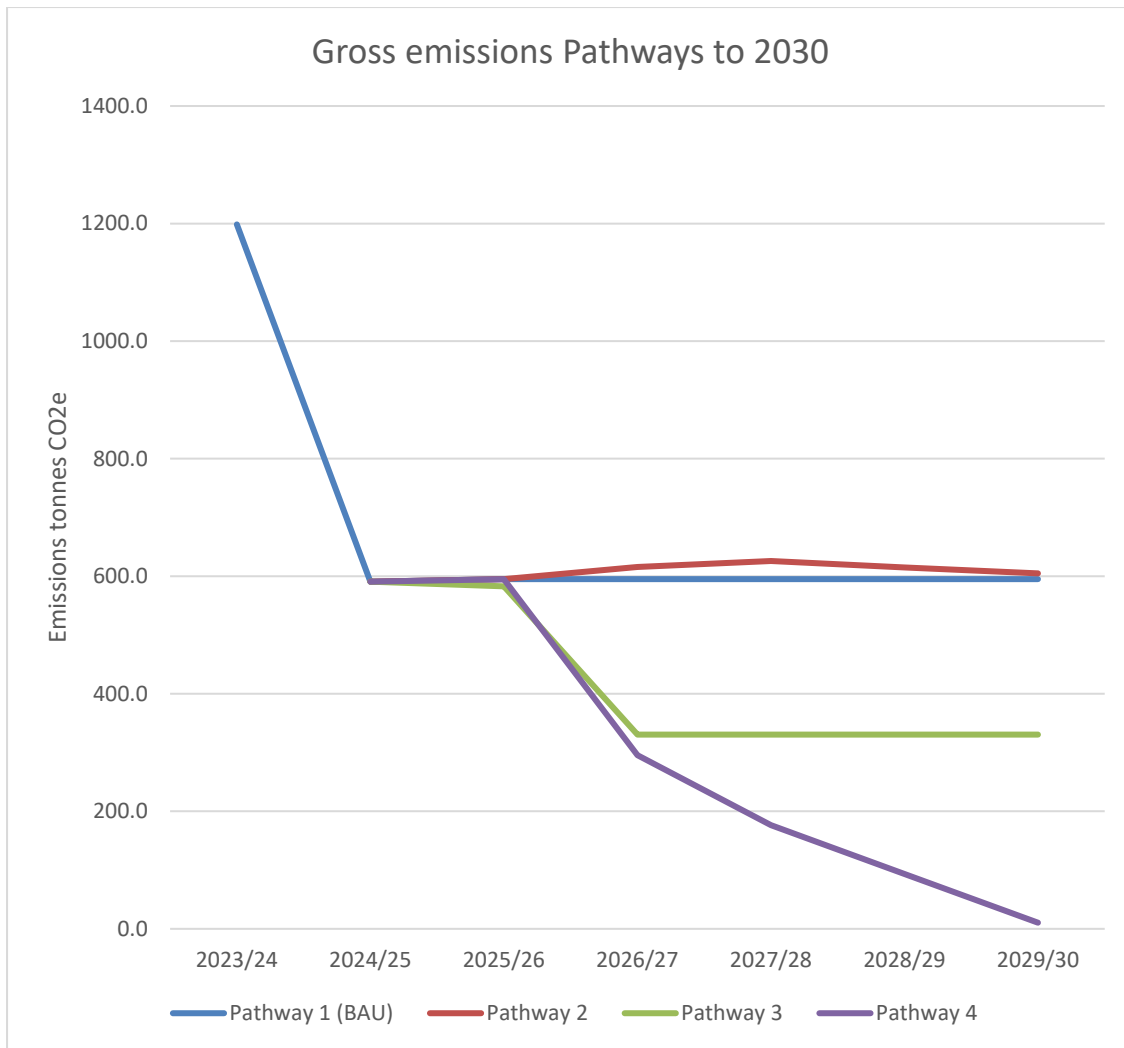
Pathway 3-this pathway does not remove our gas heating supply. It focuses on decarbonising electricity through either on-site generation or a PPA. A PPA is a power purchase agreement with a renewable generation source such as a solar farm. We have the opportunity to investigate the option of directly purchasing electricity when our current contract comes to an end in March 2026. We continue to evaluate options for installing more solar panels on our building stock. This will contribute to lowering our consumption of purchased electricity regardless of source. This pathway assumes a 100% zero carbon source of electricity from 1 April 2026.

Remaining emissions at 2030 = 330.5 tonnes CO₂e

Pathway 4- this pathway is a combination of the positive steps outlined above so requires the continued use of HVO as per pathway 1, though another zero carbon fuel may be implemented, the stepped removal of gas heating as per pathway 2 and also ensures zero carbon electricity is purchased or generated as per pathway 3.

Remaining emissions at 2030 = 10.5 tonnes CO₂e

Graph 7. Gross emission pathways to 2030



The council is committed to a pathway 4 trajectory to meet our net zero by 2030 target. We know what we need to do and the action plan sets out the steps we are taking to achieve this.

Summary of progress against our targets

For more detail on the actions related to targets please refer to the action plan update.

It is our intention to introduce milestones into our targets so we can better track progress, we shall do this for the reporting year 24/25 that will be due at the end of 2025. For now, as we only published the strategy in July this year we report a generalised progress status using a RAG (red, amber, green) system with the key below.

Key to progress colour:

Blue	Completed
Green	On track
Amber	Potential issues or low risks requiring monitoring


Sustainable Council
Objectives:

- To meet Core Aim 1: Net zero and climate resilient council by 2030
- The Council provides visible leadership on climate action.
- Council services are prepared for and resilient to climate change impacts.
- Climate change and impact on nature is embedded in all council decision-making.
- Community Wealth principles are embedded within council processes (including procurement and use of assets)

Council Targets:

Council target ref.	Target detail	Completion date	Action number	Progress
TSC1	Publish Procurement Strategy	August 2024	SC3	Completed
TSC2	New decision-making process/tool determined and rolled out	March 2025	SC6	Not yet started
TSC3	Assess and determine key climate risks	August 2025	SC4	
TSC4	Develop adaptation strategies for key council buildings and land	December 2025	SC5	Not yet started
TSC5	Deliver a revised approach to measuring & reporting Scope 3 emissions	November 2025	SC9	

Performance Measures:

Council Annual Performance Measure	Methodology	Result
Annual corporate carbon emissions scope 1, scope 2 and scope 3	Scope 1 & 2 & 3 data collected, and calculation performed using DESNZ Greenhouse Gas Emission Factors for relevant year	Gross emissions Scope 1= 939 ktCO ₂ e Scope 2= 260 ktCO ₂ e Scope 3= 1122 ktCO ₂ e
Number of staff who have had climate awareness training	Recorded via online training portal and attendance at training sessions	2023/24= 13 councillors Staff = TBC

Progress on Climate & Nature Action Plan	All actions to be scored annually using a RAG rating (red, amber, green) according to progress	82% of actions are currently reported as green (complete or on track), 13% as amber (potential or low risks) and 0 are red (at high risk).
--	--	--



Case studies

The projects in this section correspond to action numbers: SC3, SC6, SC4, SC5, SC9.

Council publishes Sustainable Procurement Policy

The council has produced a Sustainable Procurement Policy outlining its approach to spending on goods and services in a way that is environmentally, socially and economically responsible. The policy can currently be found within the cabinet papers for June 2024 here [Sustainable Procurement Policy - Appendix 1 \(lewes-eastbourne.gov.uk\)](#)

Implementation of the new policy should improve our scope 3 (indirect) emissions reporting as we can require information to be disclosed by our contractors on a regular basis.



Energy and the built environment

Objectives:

- The district’s emissions from buildings and construction have reduced
- Reduced emissions from council assets
- The district produces more green energy
- Residents, in particular those most vulnerable, can access advice, funding and practical sustainability measures
- Community Energy initiatives have been enabled and delivered

Council Targets:

Council target ref.	Target detail	Completion date	Action number	Progress
TEB1	80% reduction in council scope 1 & 2 carbon emissions (on 2018/19 baseline)	2030	EB1 EB2 EB3	41% reduction to date
TEB2	50% reduction in council energy consumption (on 2018/19 baseline)	2030	EB1 EB2 EB3	23/24=7.5% overall
TEB3	Homes in the district (all tenures) have an average EPC rating of ‘B’	2030	EB7 EB8	
TEB4	All Council homes to attain a minimum of EPC C by 2030, beginning with the retrofit of 267 council homes to reach minimum EPC C by 2025	2030 with 2025 milestone	EB7	
TEB5	Adoption of “New Homes Principles” for all new council housing	2024	EB	Completed
TEB6	Install solar PV at Seahaven Swim & Fitness Centre and estimate carbon saving	2025	EB5	
TEB7	Electrification of the councils’ waste and recycling depot (through removal of mains gas) in Newhaven	2026	EB4	
TEB8	Enable a retrofit loan scheme and invest at least £750,000	2024	EB11 CW4	Date extended to 2025
TEB9	Support community partners to deliver energy advice to at least 2000 residents between 2023 to 2025	2025	EB12 EB16	
TEB10	Double local green energy capacity (on 2018 baseline)	2026	EB10 EB17	

Performance Measures:

Council Annual Performance Measure	Methodology	Result
------------------------------------	-------------	--------

Annual corporate carbon emissions scope 1, scope 2	Scope 1 & 2 data collected and determined using DESNZ Greenhouse Gas Emission Factors for relevant year	1199 tCO ₂ e
Carbon emissions from domestic dwellings	DESNZ Local and regional CO ₂ emissions dataset (data is annually updated 2 years in arrears)	148.9 ktCO ₂ e (2021) 131.5 ktCO ₂ e (2022)
Green energy generation capacity	Renewable energy statistics- Renewable energy by Local Authority dataset- latest update	2018 (baseline) = xxx MW 2022= xxx MW To be updated with 2023 figures after 31 October 2024
% of LDC properties with an EPC of C or above	Housing asset database	66%
Average EPC rating of district housing stock	Most recent available download of EPC register	D (as of 05/09/2024)



Case studies

The projects in this section correspond to action numbers:

EB1, EB2, EB3, EB7, EB8.

Power Up to Power Down

OVESCO's vision is for a future in which 100% of our local energy needs are generated from renewable sources. We want to reduce energy demand to enable local decarbonisation and be a trusted source of advice. We do this for the benefit of the local community.



Power Up

437kW has been delivered through local rooftop solar PV funded by OVESCO's community share offers. Pipeline projects for 2024 include Holmansbridge Farm, an extension to

Priory School PV and the 17MW Ouse Valley Solar Farm. Community Energy Funding secured for projects with Peacehaven Town Council and Bevern Trust. Additional projects include a decarbonisation plan for Raystede and solar at Harvey Brewery.

Power Down

Lewes House Energy Room; Lewes District Council provided high street space for the general public to come and receive energy advice, utility bill advice and renewable advice. OVESCO gives independent, customer focused support and signposting including grants and access to the local supply chain. Energy Champions provide energy advice, home visits and attend local events across the district and reached 859 residents last year between April 2023 and April 2024.

Eco Extravaganza: held in Lewes Town Hall Saturday 18th May and attended by 255 householders who wanted to find out how to electrify their heating and generate their own power, spent time talking with exhibitors.

Eco Home Open Houses: 22 households are participating in this district wide event in locations in Lewes, Barcombe, Rodmell, Newhaven and Seaford, having made their homes more energy efficient, generate their own electricity and have electrified their heating.



For more information about OVESCO projects [Ovesco | Investing in the future of Lewes Community](#)

Stowe Place & Mews, Newhaven. Newly built affordable housing with sustainable features.

The redevelopment of the former Newhaven Police Station site in central Newhaven provides 21 affordable units (19 flats and two houses). The scheme consists of various sustainability measures including solar PV panels, and the use of MHVR ventilation to circulate air, keeping the homes temperature regulated. Heating and hot water will be provided by air source heat pumps and tenants will have access to a large bike store. These measures will significantly reduce emissions produced by the building and will contribute towards reducing tenant running costs. The development was shortlisted for 2 awards at the recent Inside Housing Development Awards 2024.



Adoption of New Homes Principles – Building Better Council Housing

Over the last five years the council has completed and developed a pipeline of over 250 council properties and are amongst only 25% of councils in the country who have built any council houses at all in the last 10 years. From the outset, the council's approach has been underpinned by a determination to build better and in the right locations, placing great emphasis on sustainability and climate resilience, high construction standards, and low running costs for our tenants. This key document explains how the council is formalising this approach and committing to a series of New Homes Principles. The principles incorporate the council's commitment to the Healthy Homes Principles and Campaign were devised following a dialogue and partnership working with the Tenants of Lewes District and will mean that a new framework now supports the design and delivery of all future council homes. The council's work recently featured in this webinar and associated guidance, produced by the Town & Country Planning Association

<https://www.tcpa.org.uk/resources/securing-healthy-homes-locally-a-webinar-for-local-government/>



Sustainable travel and air quality

Objectives:

- The council has a zero emission at tailpipe fleet
- Everyone has increased access to sustainable travel options and electric vehicle charging infrastructure
- Air pollution is reduced to public health is improved

Council Targets:

Council target ref.	Target detail	Completion date	Action number	Progress
TST1	All council fleet to be zero carbon (at tailpipe)	2030	ST2 ST3	
TST2	Deliver air quality action plans for Lewes and Newhaven	2024	ST11	Date extended to 2025
TST3	Implement sustainable transport plans in new council housing developments	2024	ST7	
TST4	New car club vehicles (including at least 1 EV) in coastal towns	2025	ST8	
TST5	Expand our provision of publicly accessible electric vehicle charging into at least one more car park	2025	ST5	
TST6	Decarbonise all small to medium sized fleet vehicles (non- waste and recycling fleet) by 2026	2026	ST2	

Performance Measures:

Council Annual Performance Measure	Methodology	Result
Carbon emissions from the council's fleet	Fuel consumption or mileage records	617 tonnes CO ₂ e
Carbon emissions from the district's transport	DESNZ Local and regional CO ₂ emissions dataset (data is annually updated 2 years in arrears)	152.3 ktCO ₂ e (2021) 151.3 ktCO ₂ e (2022)
Number of sites with electric vehicle chargepoints active in the district	Council records and Zap Map	17 sites (05/09/2024)

Objectives:

- The council has a zero emission at tailpipe fleet
- Everyone has increased access to sustainable travel options and electric vehicle charging infrastructure
- Air pollution is reduced to public health is improved



Case studies

The projects in this section correspond to action numbers: ST2, ST3, ST5, ST7, ST8, ST11.

New EV charging points in 11 council car parks

Lewes District Council has completed its ambitious programme to install 64 public charging points for electric vehicles across 11 of its car parks.

Under a 15-year agreement, Connected Kerb, a leading UK electric vehicle infrastructure contractor, has provided and set up the charging points, as well as replaced existing broken rapid charging units.

In Lewes, the car parks with electric vehicle (EV) charging points are: Mountfield Road, Little East Street, Phoenix Causeway, West Street (Needlemakers) and Friars Walk. They are also installed in Sutton Road, Saxon Lane and West Street car parks in Seaford; Bay Vue and Lower Place car parks in Newhaven; and Barcombe car park.



Councillor Emily O'Brien, Cabinet Member for Climate, Nature and Food Systems, said: "We want to make it easier for local people to do the right thing for the environment. I've heard from many people who want to get an electric car and can afford to do so, but they don't go ahead because of lack of access to chargers or to off-street parking where they can install one."



Seaford Better Cycling Options Study 2023 (SBCOS)

Seaford Community Partnership (SCP) commissioned specialist Active Travel consultants, Transport Initiatives, to undertake a detailed study of the existing cycling provision in Seaford, identify barriers to increased participation and suggest specific improvements. This was funded by the Ouse Valley Climate Action Project and included two rounds of public consultation. The report was published with detailed Appendices in the autumn of 2023. It is widely acknowledged that cycling produces a wide range of benefits for individuals, the local economy and the environment. Local Councils have policies that support the promotion of cycling and other active travel. Previous studies of cycling in Seaford had established several issues and to advance the knowledge base for Stakeholders, the SBCOS includes detailed proposals for improvements with suggested priorities and scheme cost estimates. It is intended that the report is an evidence-based document for Statutory Authorities to use in pursuit of capital funding for the implementation of Active Travel policies.

The existing cycling infrastructure and potential improvements were assessed using tools provided by the Department of Transport and reflected national policy up to Autumn 2023. With the aim of creating safe, convenient and attractive cycle routes, the proposals are based on the existing Local Cycling and Walking Infrastructure Plan (ESCC), site visits, responses from the four Local Authorities and public consultation. 177 people commented on the proposals and 70% supported the principle of improving cycling in Seaford. A summary of the report can be found at <https://seafordpartnership.co.uk/promoting-cycling/>



Cycle Lewes - Fighting climate change, unlocking funds & delivering infrastructure

Cycle Lewes promotes cycling as a healthy, quick and green option for moving around, seeks to improve cycling infrastructure, increase facilities and create safer streets for all. www.cyclelewes.org.uk

To address insufficient cycling parking stands in Lewes we carried out a 2022 'Cycle Parking Audit' to understand where the greatest needs were. We asked cyclists where they wanted to see more bike stands and a number of locations were highlighted. This then fed into a study commissioned by LDC on Cycle Parking facilities in Lewes Town carried out by Sustrans and priority sites were identified.

We used this information to work with organisations/landowners to design plans and costings for bike stands; and have successfully secured grant funding for several of these. An example was the need for bike stands by or close to the Lewes FC ground. Each match day bikes can be seen locked insecurely to fences and railings.

With a grant from the South Downs National Park Trust and a small donation from our own members bike stands were installed in the Priory Grounds in May 2024. We worked in partnership with LDC Officers (as landowners) who arranged the installation. Community groups have an important role in addressing the climate crisis; government, national and local cannot do this alone.

This project is one of several that we have initiated over the past 4 years through working collaboratively. Others include working with transport experts to redesign our streets giving priority to pedestrians, wheelers, cyclists, upgrading shared paths and signage, production of the Lewes Cycle



Map and security marking bikes to prevent theft. The total value of grants we have raised is approx. £90,000.

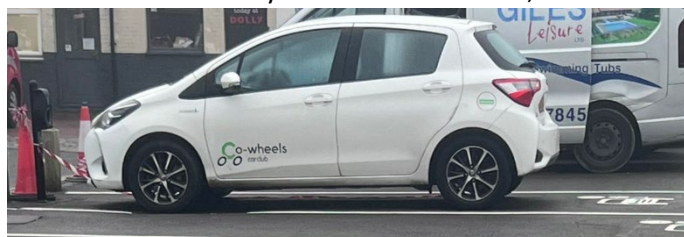
Photo credit: Cycle Lewes.

Co-wheels car share scheme- petrol to EV

By installing electric vehicle chargepoints in 2 of Lewes town’s car parks the council has enabled Co-Wheels car club to swap the existing petrol vehicles located there to go electric.

Co-Wheels estimate a carbon saving of just over 5.5 tonnes per year, plus local air quality benefits.

The Phoenix Causeway car in 2023 drove 15,195 miles = 2.25 tonnes of carbon



The Little East Street car in 2023 drove 13,841 miles = 3.27 tonnes of carbon

The council hopes to enable further car club cars in other towns by 2025.



Biodiversity

Council target ref.	Target detail	Completion date	Action number	Progress
TB1	All major development achieving at least 20% biodiversity net gain	2030	B6	
TB2 (also linked to TWRS 1 & 2)	At least 2 high profile water and nature-based restoration projects progressed	2025	WRS1	
TB3	30% of LDC green spaces to be under active management for biodiversity by 2026	2026	B1	

Performance Measures:

Council Annual Performance Measure	Methodology	Result
% split of biodiversity net gain delivered (through the planning system): a) on-site within new developments; b) off-site locally and c) through the national credit system.	Council records	No data available yet
ktCO ₂ e sequestered by land	DESNZ Local and regional CO ₂ emissions dataset (data is annually updated 2 years in arrears)	14.4 ktCO ₂ e (2021) 14.3 ktCO ₂ e (2022)
Number of sites under active management for biodiversity	Council records and partner records	10 (as nature reserves)
Quantity of trees/hedgerows planted	Council records and partner records	LDC planted 42 trees, Lewes Urban Arboretum planted 74 street trees & 250 whips as hedging. Trees for Seaford- data not yet available. BN9Trees planted 85 trees & saplings, and 5 shrubs.
Number of practical conservation/volunteering activities supported by the council	Council records	8 groups actively supported- it is noted that the number of activities could be 100's and it's not possible to retrospectively calculate this- this measure will need re-defining for 2025
Continued support provided to tree-planting partners such as Lewes Arboretum and Trees For Seaford.	Council records	We have worked with groups on habitat restoration and tree planting e.g. Railway Land Wildlife Trust and friends of groups and tree planting with groups such as Lewes Urban Arboretum, BN9 Trees, Trees for Seaford, Hamsey Parish Council. Commitment made to watering these trees for 3 years

Objectives:

- Restored, resilient and joined up nature network
- UNESCO Biosphere designation is retained, and the area extended
- Meet the requirements of the Biodiversity Duty (Environment Act)



Case studies

The projects in this section correspond to action numbers: B1, B6, WRS1.

Lewes Swift Supporters - Making Lewes a Swift-friendly town

LSS aim is to increase the number of Swifts nesting in Lewes by providing more Swift nesting sites, raising people's awareness and knowledge of swifts through education and engagement and providing opportunities for local people to get actively involved with and appreciate their local Swifts.



LSS have been monitoring Swifts in the town of Lewes from 2019 to 2024. They fund-raising to enable installation of Swift nest boxes near to existing colonies to help the colonies to expand. Other activities include organising Swift talks, exhibitions, events and Swift Walks to help residents and visitors to Lewes to learn more about Swifts and how to help them to thrive. They also involve residents in reporting Swift sightings through an annual Swift Watch citizen science project, and work with other partner groups such as Lewes Nature Mosaic Project, Lewes Climate Hub to spread the word about Swifts more widely. The group responds to consultations on local planning proposals to

advocate Swift accommodation in new developments and works with Lewes Town Council so that councillors may make informed decisions about including Swift accommodation when commenting on planning applications.

To find out more: <https://e-voice.org.uk/lewesswiftpartners/>

Wildflower Ringmer - Improving biodiversity of green spaces managed by Ringmer Parish Council

Wildflower Ringmer aims to transform close mown green spaces into species rich grassland rich with wildflower native species and buzzing with insects. Following the Council's designation of wildflower areas excellent progress has been made:

- Improving species richness and abundance of native wildflower species in medium length grassland on the Village Green Banks in the area closest to the Well House;
- Creating a meadow area inside the Well House enriched with cornfield annuals sown in 3 beds;
- Creating a semi-circular bed sown with cornfield annuals to enhance the war memorial bench area;
- Wildflower Ringmer maintaining these areas (with modest use of Council funds for annual cut);



Despite this progress most of the Village Green sward remains a hostile environment for pollinators due to the harsh cutting regime which is applied across the whole area. Our proposal to Ringmer Parish Council to change the mowing regime (reducing frequency and using raised mower blade height) for all areas except those used for Sports has been largely approved on a trial basis for 2025. This will allow species such as Bird's-foot -trefoil, Selfheal and Clover to flower. The change is in-line with the Council's Biodiversity Policy, will benefit pollinators and provide a more attractive setting for residents. A highlight of 2024 has been working with the Parish Council following their acquisition of The Almond Field as a result of a generous bequest by a Ringmer resident. The site is 0.8 hectares in size and although close to the village centre is within the South Downs National Park. It has been accepted as a Call for Nature Site by SDNP. We are still familiarising ourselves with the nature of the site through the seasons. It is evident that without appropriate active management that a few dominant species will take over. We need to meet this challenge to continue to support increased biodiversity.



Common Cause Co-operative - Lewes Allotment Biodiversity

Lewes Mosaic Project is a partnership between Common Cause and the Railway Land Wildlife Trust and connects Nature and Wellbeing, helping to support a mosaic of habitats across the town.

We have been working with allotment holders and expert ecologists across 6 allotment sites in the town to raise awareness of the wildlife and

biodiversity present on these sites and provide support and advice on how to protect and increase biodiversity while maximising food growing. A survey of allotment holders found that while food growing is their top priority, watching observing and nurturing wildlife comes



second. We have completed 14 surveys of birds, pollinators, amphibians, wildflowers and trees over the summer, the results can be viewed at <https://www.commoncause.org.uk/mosaic-project-allotment-blog>. We have sent out 4 newsletters to over 100 people with top tips on what creatures to look out for and how to prepare for each season to encourage more wildlife. The project is funding by the Heritage Lottery Fund and Lewes Town Council and will continue until January 2026. If you would like to get involved contact Helen, lewesmosaicproject@gmail.com



Living Coast UNESCO Biosphere – City Nature Challenge

In April *The Living Coast* UNESCO Biosphere delivered The City Nature Challenge, which was an opportunity to encourage communities to go outdoors and observe nature on their doorstep, from Shoreham to Newhaven, from the Downs to the beach. A toolkit for the public and groups was available, and walks were led by SDNP to record as much nature as possible.



Local Nature Recovery Strategies (LNRSs)

New strategies for nature covering the whole of England have been designed as tools to drive more coordinated, practical, and focused action to help nature. They will support the delivery of Biodiversity Net Gain (BNG) and provide a focus for the strengthened duty on all public authorities to conserve and enhance biodiversity. Preparation of each LNRS is led by a “Responsible Authority” appointed by the Defra Secretary of State. Lewes district falls under the joint East Sussex and Brighton & Hove strategy. The Responsible Authority must take steps to involve all supporting authorities in the preparation of the local nature recovery strategy, and different engagement methods have been tailored to audiences and parts of the LNRS process, the following are a few key examples:

A public survey canvassed 1,834 residents’ views to inform LNRS priorities for nature, while a webinar in June attracted 109 attendees /137 recording views from East Sussex. [What do 85 community groups, NGOs and local councils think is important? | Sussex Nature Recovery](#)

Webinars to brief key audiences and what is required specifically from them e.g., landowners/managers, parish councils, community groups, while follow up surveys are being used to capture existing and planned actions for nature to inform LNRS measures. Workshops with 30 key organisations & partnerships for nature in Sussex; representatives from health & wellbeing sector & Sussex biodiversity experts. Further engagement with landowners, farmers, organisations and groups is planned for the Autumn, while a public consultation of the draft documents will be promoted in early 2025.



Trees Committee of Friends of Lewes – Lewes Urban Arboretum Project

We aim to make Lewes an Arboretum Town; to create an integrated resource from the town’s trees for educational, tourism and amenity purposes and to continue the previous generations’ tradition of planting for the future, to restore our streetscapes and to ensure that we plant species that

will thrive in our changing climate.

A favourite session last season was the planting of five Alders and five Black Poplars in Ham Lane, between the Scout Hut and the Cockshut stream. It was pouring with rain most of the day but there was a great family atmosphere as the Beaver Scouts were there with some



parents to weed and mulch the hedge they had planted nearby. The photograph is of us when we had finished.

Lewes District Council - Thank you event for wildflower, tree planting and friends of groups.



The cabinet member for Climate, Nature, and Food Systems invited volunteer tree and wildflower planting groups, friends of woodland spaces and community garden groups to an informal event to say thank you for their impactful activities action across the district to address the climate and ecological emergency. At the event the groups made new links with some new agreements to share seed being made, they shared updates, information and experiences of projects and networked with one another over tea and cakes baked by Sharing Skills CIC.

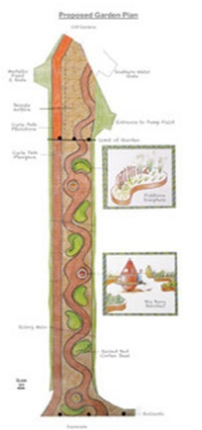
Seaford Community Partnership – Biodiverse garden with native species for seafront location

Plans for a new community garden were approved by Lewes District Council in 2023 following broad support from the community. The project is fully funded by OVCA, UKSPF and Lewes CIL. We now await the decision of a Public Inquiry for the road closure. This will take place in



Nov 2024. The plan is to enhance a seafront location near Splash Point, transforming a pot-holed, unmade-up road into an attractive garden of native plants engaging local schoolchildren and people of all ages to learn about Seaford’s wonderful and rare biodiversity and the effect climate change (intensified heat, drought, flooding, storms) will have on it. The garden will show how plants can colonise and survive this hostile environment, creating plant and animal communities from bare shingle and chalk cliffs. The garden and the adjacent Pump Field will together demonstrate and be a working area for students to put schoolwork in a local setting. After wide consultation with educational and environmental experts, the garden will consist of large 7 raised beds representing shingle and chalk ecosystems and planted up with over 70 native species. The beds will show how plants colonise adverse locations, form plant communities and soil and thus how biodiversity comes

about. Between the beds is a meander path (all access) and a resurfaced existing cycle path. Along the meander path are three buoy seat sculptures which will represent the Elements: Air, Earth and Water.



Notice boards and QR codes will give information linking climate, these Elements and biodiversity. In particular they will outline possible actions we can all take to try to protect biodiversity and mitigate the worst effects of climate change.



Sustainable Food Systems

Objectives:

- We have increased sustainable food production
- We have a strategic food systems approach across the district
- We have enabled food resilience

Council Targets:

Council target ref.	Target detail	Completion date	Action number	Progress
TSF1	Deliver at least one sustainable food system project e.g. Capturing the Value of the Catch- This is a relevant target in 2 action areas	2026	SF1	
TSF2	Work with Lewes District Food Partnership to achieve Sustainable Food Places Silver award by 2026	2026	SF6	

Performance Measures:

Council Annual Performance Measure	Methodology	Results
Number of orchard trees or other edible planting annually	Council & Partner records	33 orchard trees planted with Brighton Permaculture Trust in Lewes and Seaford 23/24
Amount of food waste collected annually	Waste Data Flow records	924 tonnes



Case studies

The projects in this section correspond to action numbers: SF1, SF6.

Lewes District Food Partnership (LDFP) - Recognised by national Sustainable Food Places Bronze Award

LDFP works with local people, communities and organisations to build local food systems that work better for everyone.

Sustainable Food Places awards recognise places where individuals, communities and local organisations are coming together to build better food systems. The bronze award Lewes District reflect the vibrant Good Food



Movement that has taken hold across the area. The application involved over 30 local community groups and projects, over 15 food businesses and social enterprises, 11 experts by experience and 9 schools and young people's organisations.

Featured Project: Pippa's Group Nursery, Landport, Lewes.

Pippa's Group Nursery run weekly sessions at Landport Community Garden. Children at Pippa's Group are encouraged to try new flavours with healthy snacks funded by Lewes District Food Partnership, incorporating flavours from the garden. The garden provides a safe & supported space for children to explore sensory connections with food and nature. bronze award celebrates joined-up, sustainable food systems and belongs to the children and staff growing, cooking and eating together at Pippa's Group.



Bronze Award Winners



Lewes District Food Partnership Coordinator Nancy Wilson said "The team at LDFP are so proud to be part of such a creative and committed Good Food movement. This award belongs to all of the brilliant individuals, communities and individuals working across the movement and we're delighted at the opportunity to celebrate each and every one of them"

Photo credit Nancy Wilson, LDFP

For more information: www.lewesdistrictfoodpartnership.org



GIA (Gardening In Action) CIC – Growing Community Toolkit

GIA seeks to grow the joy of plants and gardening in everyone, enriching lives, building communities, increasing employment opportunities, advocating good horticultural practice, and positively impacting the environment.

The Growing Community Toolkit is a free resource for community groups and volunteers in Sussex. It's created by community volunteers to provide the accurate and practical information you need to set up and run a community group or community garden. You'll find everything from getting insurance to growing carrots!

The Toolkit is a highly accessible website www.growingtoolkit.org complemented by virtual and in person events across Lewes District. Although the Toolkit is aimed at greenspace management groups and community gardens in Sussex, elements of the Toolkit may be valuable to other types of community groups.

Topics in the Toolkit include:

- Setting up and running a community group
 - Mental health friendly communities
 - Finding, understanding and protecting your space
 - Looking after your space
 - Local networks - sharing and collaborating with others
 - Plant profiles
 - Biodiversity - helping wildlife in public spaces
 - Water and watering
 - Growing vegetables and herbs in community spaces
 - Fruit trees and community orchards
 - Tree planting and tree care
 - Tools and equipment
- For more information:
www.growingtoolkit.org

New Allotments in Newhaven

The Newhaven Town Mayor has opened a development of 14 new allotments as part of the Eastside Recreation Ground project. Improvements completed on the allotments mean each plot now has its own shed, path, growing area, water source, surrounding fence and gate.

A new access path has also been laid which leads to the refurbished allotments. Councillor Pinky McClean-Knight Newhaven Town Council said, "As a keen gardener myself, I appreciate not only the practical and environmental benefits of growing your own crops, but also those of personal well-being and improved mental health that having an allotment can bring. "Local authorities across the UK have reported huge increases in applications for allotments, including in Newhaven. Councillor Emily O'Brien, Cabinet Member for Climate, Nature and Food Systems, said: "Since the pandemic many people have reconnected with nature, outdoor life and the joy that is derived from growing your



Watering wisely – 12 top tips and insider secrets

Water horticultural Dan Orlowski sharing top tips and insider secrets on watering wisely from the horticulture industry. You can also watch Dan give some of his expert tips via the Original Gardening YouTube channel (scroll down to end of page). This content was presented as part of a workshop at the Parents Community Garden in June 2024.

 <p>Check water temperature Just like us, plants can get a shock from hot or cold water, particularly young plants and seedlings. Check the temperature of your water before using it. In winter, water butts can get very cold. In summer, ground water and water in hoses can heat up. If water is too hot or cold, leave it out in a shade of watering can for a couple of hours before using it.</p>	 <p>Does watering in hot weather SUICIDE plants? There's an old gardening myth about watering in sunlight scorching leaves but it's not true and has been debunked. In community gardens, you might just have to water when you can – and that's fine! Just use the evening unless morning watering fits.</p>	 <p>Evening versus morning watering In hot weather, try to water in the morning or the evening to reduce the amount of water lost through evaporation. There are pros and cons of watering versus morning watering. Evening watering in hot weather means the plants are moist and happy overnight. But in cold weather, it's better to water early in the morning. If plants are wet and overnight it can rot their roots.</p>
 <p>How to use a watering can Watering cans come with a rose, but this is only really useful for seeds and seedlings. Use your watering can without the rose, pour gently and slowly around each plant – not on top of it.</p>	 <p>How to water seedlings in trays In the industry, workers are taught to water under and not top of plants and seedlings – in water beyond the edge of the tray. This is because if you try to keep all the water within the tray, you're not watering the plants on the edge of the tray too dry.</p>	 <p>Water woody plants well (evening watering) The fine if woody plants are shrubs and trees. These plants need a really good soak once or twice a week. The water needs to penetrate deep into the soil. It's a common mistake to water trees and shrubs a little bit, more often, as sometimes the 50%.</p>
 <p>How to tell if a plant needs watering (1) Look at the plant: signs of wilting mean the plant needs watering. If the plant is flat without enough water for longer, it will sometimes "close down" – for example, a tree will behave as if it's asleep and drop its leaves. The plant also becomes more susceptible to pests and diseases.</p>	 <p>How to tell if a plant needs watering (2) An industry trick is to lift plants to see how heavy they are to test their weight. This is done by lifting or holding the plant to get a sense of the weight of your plants before and after watering. You'll notice that a good amount of water has been absorbed.</p>	 <p>How to tell if a plant needs watering (3) Use a water meter. The cheapest water meter is your finger! Surface soil might look wet, but a centimetre or so below it can be dry. Push a finger into the soil and feel what it's like a few centimetres below the surface. You can also buy water meters quite cheaply – they can be useful tools and engaging for children – especially children. But they are also very easy to lose!</p>
 <p>Mulch, mulch, mulch! Mulch is just a term for a layer of something on the surface of the soil or compost. It makes a huge difference to retaining the water needs of all plants and we hope to do a longer section on mulching on this. It can be anything from grass, compost, horse manure or woodchip.</p>	 <p>Watering soil or compost If soil or compost becomes very dry it becomes "hydrophobic" which means water beading – in it won't absorb water. Water will just pour off the top of soil, or through and out of the bottom of pots. This is to do with water droplets, not it doesn't like to take. Smaller pots can be dunked in a bucket of water.</p>	 <p>Do you need to add drainage to pots? Adding drainage (a layer of soil called an air layer) to the bottom of pots has been a common issue amongst gardeners for years. The spread thinking is that it stops the pots, and can actually cause problems. Just get your plants to check over the drainage holes to stop them getting blocked.</p>

RETURN TO MODULE HOME
RETURN TO TOOLKIT HOME

own food. The new allotments have been Funded by UK Government with grant funding secured by Lewes District Council and match funding provided by Newhaven Town Council.



Reducing Waste and Litter

Objectives:

- Reduced waste
- Increased recycling rates
- Improved public realm
- Reuse and repair projects are encouraged

Council Targets:

Council target ref.	Target detail	Completion date	Action number	Progress
TRW1	Reduce waste from council offices by 50%	2030	RW2	
TRW2	District recycling rate increase to 55% (national target)	2025	RW3 RW4	45% 2023/24

Performance Measures:

Council Annual Performance Measure	Methodology	Result
Amount of waste collected in the district	Waste Data Flow records	33,450 tonnes
Amount of waste recycled in the district	Waste Data Flow records	14,977 tonnes
Amount of waste collected from offices	Council records	10,920 kg general waste and 7,178 kg recycling (maximum- estimated assuming full bins on weekly collection cycle)



Case study

The projects in this section correspond to action numbers: RW2, RW3, RW4.

Environment First –

Community Action

The Community Recycling team at the council continue to attend local events such as Working Towards Zero Carbon fair in Peacehaven where they handed out exterior and kitchen caddies along with food waste bags, they also did a “what happens to my recycling once it’s been collected” talk which was very well received. There is an ongoing program of volunteer litter picks arranged within the district, groups like Malling Litter pickers, Chailey litter pickers, Seaford Litter pickers to name a few. The Waste Services Blitz Team will be targeting areas across the district using the whole streets cleansing team working on a ‘grot spot’ using all the tools we have such as Gladiator, graffiti removal, jet wash, and local volunteers as well.

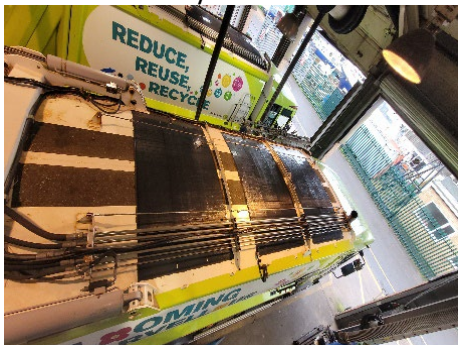


Cleaning up our fleet and the UK’s first electric 10t street Sweeper!

As of the 1st April 2024 all existing fleet vehicles (including non-waste vehicles) have made the switch from conventional diesel to HVO (Hydrotreated Vegetable Oil). This is making a substantial difference to our forecast carbon emissions as fleet fuel consumption accounts for more than half of the council’s carbon footprint (scope 1 & 2) and HVO is expected to ‘clean up’ emissions by more than 90%.

The council is still looking at alternative fuels though, as the current combustion engine diesel fleet comes to the end of its life. More electric vehicles will arrive over the next year, including **5 EV street cleansing vehicles** to replace the current diesel fleet **and a 10t street sweeper, which will be the first in the UK.**

25 of the waste trucks have also recently had PV panels installed on their roofs (see photo). These panels help power the bin lifts to reduce reliance on the diesel/HVO powered motors. Their effect on fuel efficiency will be evaluated and hopefully reported here next year.





Water, Rivers and Seas

Objectives:

We will support and encourage the responsible authorities, stakeholder communities, landowners and others in their efforts to:

- mitigate the risk posed by a changing coast
- support communities to be resilient to flooding
- manage waterways and improve water quality
- preserve our water resources

Council Targets:

Council target ref.	Target detail	Completion date	Action number	Progress
Natural Flood Management:				
TWRS1 (and linked to TB2)	Deliver 3 partnership projects, winter 2024/25, to hold water and help reduce flood risk	2025	WRS1 WRS3	Wilder Ouse projects and specific sites like 'Ringmer Wetlands' to be reported on in 2025
TWRS2 (and linked to TB2)	Deliver a programme of work through our partners for the medium term 2025 – 2028 to <ul style="list-style-type: none"> -help reduce flood risk -improve drought resilience -provide natural mechanisms for improving water quality, and -provide blue/green corridors for nature recovery 	2028	WRS1 WRS3	
Sea Defences:				
TWRS3	Survey 3 km sea defences in spring every year	Annually	WRS2	Completed 2024
TWRS4	Undertake necessary repairs in late summer / autumn as required by above	Annually	WRS2	Underway

Performance Measures:

Council Annual Performance Measure	Methodology	Result
Number of natural flood management projects delivered through our collaborative partnership approach	Council & Partner records	Wilder Ouse= 87 leaky dams, 21 ponds & scrapes Cockshut Stream restoration
Continue to monitor manage and repair our sea defences in accordance with the shoreline management plan	Council records	Monitoring completed Spring 2024 and works planned

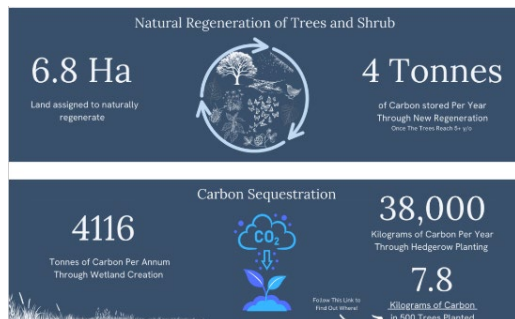


Case studies

The projects in this section correspond to action numbers: WRS1, WRS2, WRS3.

Wilder Ouse End of Year Report

Wilder Ouse is a partnership project working across the Ouse River catchment to deliver Nature-based solutions and create a Nature Recovery Network. Our small team of experts work with communities



and landowners to help people and wildlife by restoring ecological connectivity, ecosystem function and building climate resilience. The project is hosted by Sussex Wildlife Trust, and supported by the Ouse and Adur Rivers Trust, the Woodland Trust, the Environment Agency, and Lewes District Council. Progress Report 23-24 : [Wilder Ouse EOY Report 2023-24.pdf \(lewes-eastbourne.gov.uk\)](https://www.lewes-eastbourne.gov.uk)



Love Our Ouse (LOO) - Rights for the River Ouse

LOO enables local communities to celebrate, learn and act for the River Ouse and it’s tributaries from source to sea.

Following a motion passed by Lewes District Council in February 2023, Love Our Ouse has been facilitating the development of a charter of Rights for the River Ouse. Rights of Rivers is a way of reframing our relationship with nature that acknowledges its intrinsic value and its right to exist, regenerate and flourish.

To do this we have carried out a series of consultations, workshops and public events with key stakeholders including communities along the Ouse. This included the River People Tour - a series of four one-day free, inclusive events at Balcombe, Barcombe, Lewes and Newhaven which enabled people to learn about the Ouse, celebrate and act for it.



Thirty organisations took part and the events attracted approximately 1090 visitors. Key activities included our Rights of River Charter workshop and Community River Mapping which collected people’s thoughts and comments on their connection with the river.

A Rights of Rivers Summit in November 2023 brought together over 44 organisations which included local authorities, river groups, statutory organisations, academics, environmentalists, water utility companies, legal experts, farmers, and local communities. Nine rivers across the UK were represented. The programme consisted of talks and workshops exploring themes such as: What mechanisms are available to implement Rights for the River? What does a Rights of River Charter look like? Who speaks for the River? What are stakeholder's responsibilities, who do we engage with, and how?

We will continue to work closely with LDC and other stakeholders through the Steering Group to build the case for adopting rights for our beautiful river. If accepted, the charter will be launched into the public domain in 2025 with an exciting 3-year trial period testing ways on how to best implement and uphold the Ouse’s rights.

Community Wealth and Wellbeing

Objectives:

- A Just Transition is fully embedded in the district.
- There is a local skilled workforce to fulfil roles in the green and nature economy
- Community Groups are supported as partners to achieve this strategy
- Sustainable council aims have been achieved
- Locally owned and socially minded enterprises have been enabled

Council Targets:

Council target ref.	Target detail	Completion date	Action number	Progress
TCW1	Increase in proportion of procurement spend going to local companies	Annual	CW1	Doubled since 2020 – 2024 spend

				= £10.1million
TCW2	Increase in social value achieved through council contracts	Annual	CW1	
TCW3 (also linked to TSF1)	Deliver at least one sustainable food system (Capturing the Value of the Catch) – This is a relevant target in 2 action areas	2026	SF1	

Performance Measures:

Council Annual Performance Measure	Methodology	Results																		
Improvement in Thriving Places Index Score	www.thrivingplacesindex.org/	<p>2022 summary scores</p> <p>Share</p> <p><small>% Post</small></p> <p>Lewes</p> <table border="1"> <tr> <td>EQUALITY</td> <td>7.19</td> <td>High</td> </tr> <tr> <td>LOCAL CONDITIONS</td> <td>5.78</td> <td>Medium</td> </tr> <tr> <td>SUSTAINABILITY</td> <td>5.51</td> <td>Medium</td> </tr> </table> <p>Lewes 2021 summary scores:</p> <table border="1"> <tr> <td>EQUALITY</td> <td>6.58</td> <td>High</td> </tr> <tr> <td>LOCAL CONDITIONS</td> <td>5.32</td> <td>Medium</td> </tr> <tr> <td>SUSTAINABILITY</td> <td>5.27</td> <td>Low</td> </tr> </table>	EQUALITY	7.19	High	LOCAL CONDITIONS	5.78	Medium	SUSTAINABILITY	5.51	Medium	EQUALITY	6.58	High	LOCAL CONDITIONS	5.32	Medium	SUSTAINABILITY	5.27	Low
EQUALITY	7.19	High																		
LOCAL CONDITIONS	5.78	Medium																		
SUSTAINABILITY	5.51	Medium																		
EQUALITY	6.58	High																		
LOCAL CONDITIONS	5.32	Medium																		
SUSTAINABILITY	5.27	Low																		



Case studies

The projects in this section correspond to action numbers:
CW1, SF1.

The council moves from Southover House to Marine Workshops

An important pillar of community wealth building is productive use of land and assets. The council has moved its offices from Lewes to the vacant Marine Workshops in Newhaven, a former technical college, which was acquired by the council in June 2022 in order to support the regeneration of Newhaven town.

The building is being developed into a mixed space supporting marine ecology and education, commercial space and new public space. The council has provided a blue/green hub for organisations working in nature and ocean recovery where they can share desk space with



Southover House, Lewes

Marine Workshops, Newhaven



LDC staff and enable better networking and information sharing.

The council has maintained a presence in Lewes by repurposing a vacant shop in the town centre to provide a customer contact centre. Meanwhile, the former council office building in Lewes has been leased to Charleston Trust, an arts and heritage organisation who are using the building as a gallery and exhibition space which will contribute to community wealth by further developing the strong visitor and cultural economy of the town. Since opening its exhibition space in September 2023 Charleston in Lewes has welcomed more than 30,000 visitors and said early research indicates that three quarters of them have gone on to visit shops and other town attractions.

Re-imagining Newhaven Programme

Lewes District Council has secured a place on a national pilot scheme that allows the council a more flexible approach to how it uses £37 million in government funding allocations.

Lewes District Council is one of only 10 local authorities nationally that has been invited onto the pilot. It consolidates the Future High Streets Fund, Town Deal and Levelling Up Fund capital funding programmes being delivered in Newhaven.

Part of the funding will be used for the 'capturing the value of the catch project' aiming to stimulate Newhaven's fishing industry by providing two new fish landing stages to accommodate 16 small vessels from the Newhaven fishing fleet, build a New Centre of Excellence for Seafood Processing in the town including an auction room and marketplace, and create a new restaurant and community destination on the promenade area by West Beach. The purpose of this project is to retain spending

in Newhaven for longer and stimulate a local market for fish, creating jobs and wealth locally.

In July, the planning committee at Lewes District Council has approved the redevelopment of the promenade above West Beach in Newhaven. The far-reaching plans will turn the venue into a magnet for residents and visitors, with a new restaurant, outdoor gym, children's play area and improved pedestrian links all in the pipeline.



Glossary

BAU	Business as Usual
BEIS	Department for Business, Energy and Industrial Please note: BEIS existed until 2023 when it was split to form the Department for Business and Trade (DBT), the Department for Energy Security and Net Zero (DESNZ) and the Department for Science, Innovation and Technology (DSIT).
BNG	Biodiversity Net Gain
CIC	Community Interest Company
CIL	Community Infrastructure Levy
CO ₂	Carbon dioxide
COP	coefficient of performance
COVID	Coronavirus disease
DEFRA	Department for Environment, Food & Rural Affairs
DESNZ	Department For Energy Security & Net Zero
EPC	Energy Performance Certificate
ESCC	East Sussex County Council
EV	Electric Vehicle
EVCP	Electric Vehicle Charging Point
FC	Football Club
GHG	Greenhouse Gas emissions
GIA	Gardening in Action
HVO	Hydro-treated Vegetable Oil
kg	kilogram
ktCO ₂ e	kilo tonnes of carbon dioxide equivalents, represented as ktCO ₂ e
kW	kiloWatt
kWh	kilowatt hour
LDC	Lewes District Council (the council)
LNRC	Local Nature Recovery Strategy
LNRCs	Local Nature Recovery Strategies
LOO	Love Our Ouse
LULUCF	Land Use, Land-Use Change and Forestry – carbon removed from the atmosphere
MHVR ventilation	Mechanical Ventilation with Heat Recovery
MW	MegaWatt
MWh	Mega Watt hour
NGO	Non-government organisation
PPA	Power Purchase Agreement
PV	Photovoltaics panels
RAG	Red, Amber, Green – used to measure progress where Green is Complete, Amber is On track, and Red is At risk.
REGO	Renewable Energy Guarantees of Origin
SDNP	South Downs National Park

tCO ₂ e	Tonnes of carbon dioxide equivalents, represented as tCO ₂ e
UKGBC	UK Green Building Council
UKSPF	United Kingdom Shared Prosperity Fund
UNA	United Nations Association Climate & Oceans Youth Cabinet
UNESCO	United Nations Educational, Scientific and Cultural Organization
WRI GHG Protocol	World Resource Greenhouse Gas Protocol

Action Plan



CLIMATE & NATURE ACTION PLAN 2024

Key

Completed or on track- no current risk
Potential issues or low risks that require monitoring
Significant issues and risks to time/resources/budget

Core Aim 1: Net zero and climate resilient council by 2030

Core Aim 2: At least 30% of the district is well managed for nature and protected by 2030

Core Aim 3: The wider district is on a pathway to net zero by 2030

Action reference (TBC)	ACTION	Action meets which Core Aim?	Action Area Objective	Action Area Target (if relevant) TBC	Is the action an adaptation or mitigation measure or does it do both?	PORTFOLIO HOLDER	Are RESOURCES available?	DATE FOR COMPLETION	2024 UPDATE	RAG
Sustainable Council										
SC1	Make council buildings & employment practice reflect sustainability values e.g. develop training for staff on climate change and carbon reduction, including senior managers & cabinet; offices have sustainably sourced supplies & exemplary recycling provision.	Core Aim 1	Visible leadership		Both- Adaptation & Mitigation	Cabinet member for innovation, delivery and people & Cabinet member for Climate, nature, and food systems	Can be delivered using existing resources Training budget to be determined	Early 2025	New online training is available for all staff. Training for senior managers and cabinet is being investigated and is likely to occur early 2025	
SC2	Increase visibility of climate nature strategy on LDC website and deliver a weekly communications programme in press, news bulletins and social media sharing progress across the district.	Core Aim 2	Visible leadership		Both- Adaptation & Mitigation	Climate, nature, and food systems	Can be delivered using existing resources	Ongoing	Website update complete in August. Weekly communications across channels continue to be produced.	
SC3	Develop and then measure the impact of sustainability and social value procurement strategy (includes development of sustainability checklist for specifications)	Core Aim 1	Visible Leadership Climate Change and impact on nature is embedded in all council decision making Community Wealth principles are embedded within council processes	TSC1	Both- Adaptation & Mitigation	Cabinet Members for Climate, Nature and Food Systems & Cabinet member for Finance, Assets and Community Wealth	Can be delivered using existing resources	2024- measurement to begin 2025	The strategy has been approved by cabinet and Contract Procedure Rules (CPR) will be submitted to cabinet in the Autumn. New regulations are coming into force. More scope 3 emissions reporting should be enabled.	
SC4	Assess and determine key climate risks	Core Aim 1	Visible Leadership Council services are prepared for and resilient to climate change impacts.	TSC3	Adaptation	Cabinet Members for Climate, Nature and Food Systems & Cabinet member for Finance, Assets and Community Wealth	Can be delivered using existing resources	2025	Work to start October 2024. Took part in workshop to produce East Sussex risk assessment (May 2024)	
SC5	Develop adaptation strategies for key council buildings and land.	Core Aim 1	Visible Leadership Council services are prepared for and resilient to climate change impacts.	TSC4	Adaptation	Cabinet member for Finance, Assets and Community Wealth & Cabinet member for Climate, nature, and food systems	Can be delivered using existing resources	2026	Not yet started	
SC6	Develop a decision making tool (to replace existing Environmental Implications Statement) to improve climate and nature outcomes with regards to council projects and decisions	Core Aim 1	Climate change and impact on nature is embedded in all council decision-making	TSC2	Both- Adaptation & Mitigation	Cabinet Member for Climate, Nature and Food Systems	Can be delivered using existing resources	2025	Not yet started	
SC7	Influence and lobby regionally and at government level for climate action	All	Visible leadership		Both- Adaptation & Mitigation	Cabinet member for Climate, nature, and food systems	Can be delivered using existing resources	Ongoing	Officers will continue to work at the regional level to direct and influence climate action using existing networks and creating new ones, maintaining and gaining new contacts in organisations that can affect and forward our work and strategy. Councillors have sent letters to Government regarding the Motion for the Ocean and to support the Clean Air Bill.	
SC8	Ensuring adaptation to climate change (including flooding, overheating, erosion, food shortages) is embedded within Sussex wide emergency planning	Core Aim 3	Visible leadership Council services are prepared for and resilient to climate change impacts		Adaptation	Cabinet member for Climate, nature, and food systems	Can be delivered using existing resources	2025	New East Sussex wide Adaptation Risk Assessment will feed into this work	
SC9	Review methods for scope 3 reporting and then work out and report our scope 3 emissions and a path to reduce them.	Core Aim 1	Visible leadership	TSC5	Mitigation	Cabinet member for Climate, nature, and food systems	Can be delivered using existing resources	2025	Initial review of greenhouse gas protocol completed, awaiting publication of Local Partnerships greenhouse gas reporting tool with new scope 3 functionality, LDC method to be updated by 2025 report.	
SC10	Develop grants programme to invest in nature and community projects	Core Aim 3	Visible Leadership		Both- Adaptation & Mitigation	Cabinet member for Climate, nature, and food systems	£50,000	2025	Initial meeting arranged for September 2024 to progress this work with an aim to offer grants in early 2025	
SC11	Develop and fund projects to support strategic aims	Core Aim 1 Core Aim 2 Core Aim 3	Visible Leadership		Both- Adaptation & Mitigation	Cabinet member for Climate, nature, and food systems	£50,000	2025	Dedicated officer recruited July 2024 to progress this work	
SC12	Seek out grant funding opportunities	Core Aim 1 Core Aim 2 Core Aim 3	Visible Leadership		Both- Adaptation & Mitigation	Cabinet member for Climate, nature, and food systems	Can be delivered using existing resources	2026	Dedicated officer recruited July 2024 to progress this work	
SC13	Develop and maintain knowledge sharing networks to make best use of opportunities to learn and work together solving local government wide challenges	Core Aim 1 Core Aim 2 Core Aim 3	Visible Leadership		Both- Adaptation & Mitigation	Cabinet member for Climate, nature, and food systems	Can be delivered using existing resources	Ongoing	Active in- Greater Brighton groups, East Sussex Climate Change Officer group, Hydrogen Sussex, Regional transport groups	
SC14 (NEW)	Update partners casestudy template so we can collect information on how the organisation has been supported by the council, did they achieve what they wanted to achieve in the past year, if not why not, what are next year plans etc.	Core Aim 2 Core Aim 3	Visible Leadership		Both- Adaptation & Mitigation	Cabinet member for Climate, nature, and food systems	Can be delivered using existing resources	2025	Template will be updated for 2025	
SC15 (NEW)	Agree strategy and method for carbon offsetting	Core Aim 1 Core Aim 3	Visible Leadership		Mitigation	Cabinet member for Climate, nature, and food systems	To be determined	2030	Various regional projects have taken place to begin assessing the potential for offsetting to happen locally (as reported in previous updates) - to updates recently.	

Energy & the built environment									
Actions to be completed by the council to make its operations and services sustainable and meet net zero by 2030									
EB1	Consider sustainability measures such as reducing energy use and water consumption in all capital projects, e.g., Stanley Turner changing rooms and Fort Road refurbishment.	Core Aim 1	Reduced emissions from council assets	TEB1 TEB2	Both- Adaptation & Mitigation	Cabinet member for Finance, Assets and Community Wealth	Resources allocated in LDC Capital Programme 23/24 to 27/28 for asset management projects £3.35m	Ongoing	Surveys have been completed on a 3.2m (inc., 2.4m Leveling up Fund) building and landscaping refurbishment project at Fort Road, including consideration of embodied carbon and reuse of materials. Shakespeare Hall and Cricket Pavilion are being retrofitted using for example recycled drainage pipes for the cladding, improving energy efficiency, creating rain gardens to mitigate against flooding, increasing biodiversity through natural planting, bee bricks, swift boxes and a community orchard.
EB2	Explore funding for carbon reduction and heat decarbonisation plans for non-housing council owned buildings and assets, (such as commercial property).	Core Aim 1	Reduced emissions from council assets	TEB1 TEB2	Mitigation	Cabinet member for Finance, Assets and Community Wealth	Exploration can be delivered using existing resources- funding for the plans is to be determined	Ongoing	A bid for funding to support this work is likely to be submitted for 25/26, subject to internal approval.
EB3	Feasibility study to assess retrofitting of council listed historic buildings in partnership with Community Energy South & OVEESCO.	Core Aim 1	Reduced emissions from council assets	TEB1 TEB2	Mitigation	Cabinet member for Finance, Assets and Community Wealth	Resourced by CES	2025	Progressing and exploring funding options to undertake small measures and feasibility study.
EB4	Redevelopment of Robinson Road Depot in Newhaven to become a fully electric site, removing gas heating.	Core Aim 3	Reduced emissions from council assets	TEB1 TEB2	Mitigation	Cabinet Member for Neighbourhood wellbeing	Resources allocated in LDC Capital Programme 23/24 to 27/28- total budget £4.2m	2024-2028	Project was paused and current estimated completion of the Robinson Road depot is early 2026, with the satellite site being mid 2026. It is expected that the site will be fully electric by 2028.
EB5	Implement £1m programme of decarbonisation measures at WAVE leisure centres e.g., rooftop Solar PV at Seahaven Swim and Fitness Centre	Core Aim 1	Reduced emissions from council assets	TEB6	Mitigation	Cabinet member for Arts, Culture and Leisure	Resources allocated in LDC Capital Programme 23/24 to 27/28- £1m	2025	Work is being undertaken directly by WAVE. A Grant Funding agreement of £300k has been confirmed which allows WAVE to start to draw down the grant funding, this includes variable pool pumps and pool covers which will save on electricity. £1.6m is allocated for PVs at Seahaven.
EB6	Delivery of low energy strategy, including renewables, green walls & reduced water use at the new Reimagining Newhaven Health and Wellbeing Hub	Core Aim 1 Core Aim 3	Reduced emissions from council assets	TEB6	Both- Adaptation & Mitigation	Cabinet member for Finance, Assets and Community Wealth	Resources allocated in LDC Capital Programme 23/24 to 27/28- Regeneration budget	2025 Update to 2026	Expected completion date is Summer 2026.
EB7	Seek resources to implement retrofit findings from ambitious Decarbonising our Housing Stock Programme, to get all council owned housing to a minimum EPC C by 2030 e.g., via Social Housing Decarbonisation Fund and appropriate grants when available. This is likely to involve working in partnership.	Core Aim 3	The borough's emissions from buildings have reduced	TEB4	Mitigation	Cabinet member for tenants and those in housing need & Cabinet member for Climate, nature, and food systems	£2.7m allocated to date (£2m SHDF grant)	2030	Successful in securing just over £2m SHDF Wave 2.2 grant funding (to be matched by £2.7m capital budget) to help improve the energy performance of 267 properties to an EPC 'C' by March 2026. Currently uploading property data to IRT DREAM software in preparation for further analysis ahead of the SHDF Wave 3 grant funding being released for applications. Dates to be announced but expected Summer 2024.
EB8	Development of the Lewes District Councils New Homes Principles and implement on a scheme by scheme basis.	Core Aim 3	The borough's emissions from buildings have reduced	TEB3	Both- Adaptation & Mitigation	Cabinet member for Finance, Assets and Community Wealth	Can be delivered using existing resources	2024	New Homes Principles have been approved by cabinet in September 2024- new action to implement- EB18
EB9	Ensure the council continues to purchase 100% renewable electricity through its central contract	Core Aim 1	Reduced emissions from council assets	TEB3	Mitigation	Cabinet member for Finance, Assets and Community Wealth	Can be delivered using existing resources	2027	A new contract begins in October 24 which continues to be 100% renewable electricity
EB18 (NEW)	Implement the Lewes District Councils New Homes Principles on a scheme by scheme basis and complete an annual review.	Core Aim 3	The borough's emissions from buildings have reduced	TEB3	Both- Adaptation & Mitigation	Cabinet member for Finance, Assets and Community Wealth	Can be delivered using existing resources	Ongoing	New action
EB19 (NEW)	Investigate viability of attaining Home Quality Mark (HQ) accreditation for newly built social housing. Assessment and rating of new homes includes: Energy and carbon performance, environmental impact of materials, sustainable transport, recyclable waste, ecological impact, water efficiency and air quality.	Core Aim 3	The borough's emissions from buildings have reduced Visible Leadership	TEB3	Both- Adaptation & Mitigation	Cabinet member for Finance, Assets and Community Wealth	Can be delivered using existing resources	Ongoing	Work underway to assess impact of sustainability measures in newly built modular and traditional builds against Home Quality Mark ratings by end of 2024 financial year.
Actions by the council and partners to ENABLE and INFLUENCE the District in becoming net zero by 2030									
EB10	Investigate viable solutions for area wide green energy (i.e. rooftop solar PV, car park solar PV, heat networks and green hydrogen) schemes, potentially working with the community energy sector and other energy providers, and co-developing local area energy plans (LAEP) across Sussex and south east.	Core Aim 3	The district produces more green energy	TEB10	Mitigation	Cabinet member for Climate, nature, and food systems	Utilising existing internal and external resources.	2025	Our feasibility work into what might be possible for net-zero solutions is ongoing and interim conclusions should be ready by the Autumn. Supporting work by Greater Brighton to develop 'Sussex Energy' which has the ambition to make greater Brighton and the Greater Sussex region net zero by 2040. LAEP work on hold and future being discussed at county level.
EB11	Develop council's enabling role for decarbonisation in the private sector, including exploration of homes retrofit financing.	Core Aim 3	The borough's emissions from buildings have reduced	TEB3 TEB8	Mitigation	Cabinet member for climate, nature and food, Cabinet member for Finance, Assets and Community Wealth	Resources allocated in LDC Capital Programme 23/24 to 27/28- £750,000 allocated to a viable scheme	Ongoing - set up loan scheme (if viable) by end of 2024	Working with ESCC on County-wide retrofit strategy- work started July 2024, 2 year programme. Support provided to ESCC for procurement of Warm Homes Energy. Lending scheme has been evaluated and options are awaiting Cabinet review in mid Autumn and possible cabinet paper-date may extend into 2025.
EB12	Work with partners including CAB1066 and Ovesco Energy Champions to deliver and promote energy saving and efficiency initiatives. Support and facilitate access to the Warm Homes Check service East Sussex scheme especially in fuel poor and hard to reach communities. Support and promote retrofit schemes e.g., Communipower and government grants.	Core Aim 3	Residents, in particular those most vulnerable, can access advice, funding and practical sustainability measures	TEB9	Mitigation	Cabinet member for Community Wellbeing	Can be delivered using existing resources	Ongoing	CAB1066 and Ovesco attend bi-monthly Cost of Living Partners Action Group and share guidance to other members of CALPAG. Drop-ins and advice sessions are promoted via social media and Lewes District Community Register. Ovesco Energy Champions delivered advice to 840 people in a range of outreach and community settings. Ovesco eco retrofit extravaganza in May 2024 was attended by 255 people. Ovesco eco open house event in September is showcasing 22 locations. LDC supports WSCC to procure new provider of group buying scheme for solar PV (Solar Together).
EB13	Continue to deliver educational material to tenants on energy saving, water reduction, biodiversity and food growing.	Core Aim 3	Residents, in particular those most vulnerable, can access advice, funding and practical sustainability measures	TEB9	Both- Adaptation & Mitigation	Cabinet member for tenants and those in housing need	Can be delivered using existing resources	Ongoing	Lewes District Food Partnership and Ovesco Energy Champions produce articles for Tenants Open Voice on energy saving and sustainable food systems, seasonal food and growing. Links with Tenant Involvement team and retirement housing help promote and recruit to project work e.g., LDFP Pinch Points.
EB14	Take the greenest approach to energy in our planning policy, including new local plan, for example, developing design codes for developers that could link to circular economy work (Towards a local plan special strategy: Policy D1) and explore higher building standards e.g. insulation / energy use (Policy CC2)	Core Aim 3	The borough's emissions from buildings have reduced	TEB3	Mitigation	Cabinet Member for Planning & Infrastructure	Can be delivered using existing resources	2026	Policies will be drafted over the summer / Autumn and be published with the new Local Plan - (December cabinet).
EB15	Require developers to carry out a whole life cycle carbon assessment of new build developments (Policy D1)	Core Aim 3	The borough's emissions from buildings and construction have reduced	TEB3	Mitigation	Cabinet Member for Planning and infrastructure	Can be delivered using existing resources	2026	Policies will be drafted over the summer / Autumn and be published with the new Local Plan - (December cabinet).
EB16	Support climate hubs and amplify impact and activity of their member organisations across the district.	Core Aim 3	Residents, in particular those most vulnerable, can access advice, funding and practical sustainability measures The borough's emissions from buildings have reduced	TEB9	Both- Adaptation & Mitigation	Cabinet member for Climate, nature, and food systems	Climate Hub will resource.	Ongoing	Climate Hubs and network regularly included in weekly communications programme, including promotion of events, activities and opportunities.
EB17	Support Ovesco, the community energy and private sector to deliver a programme of renewable power generation schemes across the district.	Core Aim 3	Community Energy initiatives have been enabled	TEB10	Mitigation	Cabinet member for Finance, Assets and Community Wealth	Can be delivered using existing resources	2025	Pipeline projects for 2024 include Holmansbridge Farm, an extension to Priory School PV and the 17MW Ouse Valley Solar Farm. Community Energy Funding secured for projects with Peacehaven Town Council and Bevern Trust. Additional projects include a decarbonisation plan for Raystede and solar at Harvey Brewery.

Sustainable Travel and Air Quality										
Actions to be completed by the council to make its operations and services sustainable and meet net zero by 2030										
ST1	Raise awareness and undertake a review of sustainable travel incentives to staff.	Core Aim 1 Core Aim 3	Increased access to more sustainable transport		Mitigation	Cabinet member for innovation, delivery and people.	Can be delivered using existing resources	end 2024	New car benefit scheme which offer discounts that increase with how environmentally friendly the car is. Preferential staff rates for car club cars is being investigated. Internal publicity carried out.	
ST2	Decarbonise all small to medium sized fleet vehicles (non-waste and recycling fleet)	Core Aim 1	Achieve zero carbon at tailpipe fleet vehicles	TST6	Mitigation	Cabinet member for Climate, nature, and food systems and Cabinet member for neighbourhood wellbeing	Fleet decisions to be costed at the appropriate time	2027	Consultation and review will be complete in January 2025, at which point decarbonisation programme can begin.	
ST3	Deliver on zero carbon RCV fleet	Core Aim 1	Achieve zero carbon at tailpipe waste fleet	TST1	Mitigation	Cabinet member for neighbourhood wellbeing	Fleet decisions to be costed at the appropriate time	2030	Of the 58 fleet vehicles, 19 are fully EV, 33% of the LDC waste fleet. LDC has placed orders to replace six street cleansing diesel tippers with five fully EV tippers with the same specification as the food waste collection vehicles thereby saving a vehicle for service cover. In addition, in August 2024, LDC will be placing an order for an EV sweeper to replace the streets 4.5 Mech sweeper. The capital funding for these orders has been agreed. In 2026, in line with the fleet strategy, the procurement project will begin for the large RCV fleet. The capital funding for this has yet to be agreed.	
Actions taken by the council to ENABLE and INFLUENCE the District to become net zero carbon by 2030 and to address the ecological emergency										
ST4	Ensure that local planning policy and guidance includes requirements for alternatives to car travel, passive and active EVCPs and cycle parking on all new major developments (Local plan policy IC9)	Core Aim 3	Increased access to sustainable transport. Air pollution is reduced and public health improved		Mitigation	Cabinet Member for Planning & Infrastructure	Can be delivered using existing resources	2026	Policies will be drafted over the summer / Autumn and be published with the new Local Plan - (December cabinet).	
ST5	Complete Electric Vehicle Charge point installations & deliver a further programme of EVCPs in car parks. Progress opportunities for Rapid EV charge points at leisure facilities.	Core Aim 3	Increased access to sustainable transport. Air pollution is reduced and public health improved	TST5	Mitigation	Cabinet member for Climate, nature, and food systems & Cabinet member for neighbourhood wellbeing	Resources allocated in LDC Capital Programme 23/24 to 27/28 £150,000	2026	First phase of EVCPs completed. Second phase installs in Peacehaven awaiting quote. Best use of remaining funding to be evaluated by officers at appropriate time. Rapid EV charging options with consultants.	
ST6	Support ESCC to deliver on-street residential EV charge point infrastructure programme so that all residents are within a convenient distance of a place to charge their car.	Core Aim 3	Increased access to sustainable transport. Air pollution is reduced and public health improved		Mitigation	Cabinet Members for Planning & Infrastructure and Cabinet member for Climate, nature, and food systems	LEVI funding allocated to ESCC	2030	Work continues with ESCC lead officer to deliver strategic infrastructure, currently carrying out procurement.	
ST7	Deliver sustainable transport plans in new council housing developments in line with "New Homes Principles" on a scheme by scheme basis.	Core Aim 3	Increased access to sustainable transport. Air pollution is reduced and public health improved	TST3	Mitigation	Cabinet member for tenants and those in housing need	Can be delivered using existing resources	2024	New Homes Principles was approved at September cabinet.	
ST8	Enable the expansion of car clubs into coastal towns and enable car clubs to convert petrol vehicles to electric	Core Aim 3	Increased access to sustainable transport. Air pollution is reduced and public health improved	TST4	Mitigation	Cabinet member for Climate, nature, and food systems	Resources allocated in LDC Capital Programme 23/24 to 27/28 £25,000	2025	Legal work being completed.	
ST9	Enable integrated travel by assessing LDC estate for opportunities and by supporting E-charge bike hire and delivery scheme.	Core Aim 3	Increased access to sustainable transport. Air pollution is reduced and public health improved		Mitigation	Cabinet member for climate, nature and food systems	Resources allocated in LDC Capital Programme 23/24 to 27/28 £10,000	2025	Car park review and stakeholder engagement complete. Installation of cycle parking to be delivered in 2024/25. Get Bikery CIC have expanded e-cargo bike hire and delivery scheme into the coastal area of the district.	
ST10	Influence delivery of sustainable transport between art, cultural and natural assets across the district (e.g. Art Bus – Charleston in Lewes and Firle, Towner, etc). Work with Sussex Modern.	Core Aim 3	Increased access to sustainable transport. Air pollution is reduced and public health improved		Mitigation	Cabinet member for Arts, Culture and Leisure	Can be delivered using existing resources	2025	Working with the newly formed East Sussex, Brighton & Hove and West Sussex Local Visitor Economy Partnership (LVEP) aims to collectively champion positive changes for Sussex including sustainable transport.	
ST11	Update LDC Air Quality Action Plan and review annually via annual status report (published by Defra Oct-Nov)	Core Aim 3	Air pollution is reduced and public health improved	TST2	Mitigation	Cabinet member for Climate, nature, and food systems	Can be delivered using existing resources	update by Spring 2025, and then Ongoing	AQAP update is currently in progress with draft and public consultation by Spring 2025.	
ST12	Work with ESCC and partners e.g. Sustrans to deliver sustainability/air quality events with community groups and schools e.g. School Streets and "Living Streets" to raise awareness of the health impacts of poor air quality and climate change	Core Aim 3	Air pollution is reduced and public health improved		Mitigation	Cabinet member for Climate, nature, and food systems	Can be delivered using existing resources	Ongoing	Ongoing - ESCC is delivering a School Street at Southover CE Primary School in Lewes and looking to deliver more as funds allow. Sussex-air partnership (all Sussex local authorities incl LDC) have ongoing project with Sustrans although due to finish in February 2025 as no Defra grant funding rounds in 2023 or 2024. Currently seeking alternative funding in order to continue project.	
ST13	Work with NHS and Public Health partners via Sussex-air to raise awareness and provide guidance on health impacts of poor air quality and mitigation measures e.g. wood burner clean air night https://sussex-air.net/	Core Aim 3	Air pollution is reduced and public health improved		Mitigation	Cabinet member for Climate, nature, and food systems	Can be delivered using existing resources	Ongoing	Ongoing Currently seeking input from PH partners in development of the AQAP and will require sign off from DPH for future Annual Status Reports. Greater involvement will allow for better partnership working in dialogue around air pollution and health impacts. Will be seeking to improve LDC web pages and information on air quality and health impacts/ access to active travel/buses etc. over next 12 months.	
ST14	Support ESCC to enable new cycling and walking initiatives as detailed in the Draft East Sussex Local Cycling & Walking Infrastructure Plan (LCWIP)	Core Aim 3	Increased access to sustainable transport. Air pollution is reduced and public health improved		Mitigation	Cabinet Members for Planning & Infrastructure and Cabinet member for Climate, nature, and food systems	Play a role in seeking funding to enable activities if suitable funding streams become available	Ongoing	AQO is also member of ESCC Bus Service Improvement Plan steering group allowing LDC to promote bus and active travel. Information to be made available on upgraded Sussex-air website and LDC website if permitted.	
ST15	Develop a pathway to a low carbon taxi fleet in partnership with Sussex-air (to be reported via Air Quality Action Plan annual status report.)	Core Aim 3	Air pollution is reduced and public health improved		Mitigation	Cabinet member for Climate, nature, and food systems & Cabinet member for community wellbeing	Can be delivered using existing resources	2025	East Sussex taxi survey undertaken in 2024. Liaising with East Sussex Licensing Group to seek viable methods of supporting transition to EVs - ongoing.	

Biodiversity										
Actions to be completed by the council to make its operations and services sustainable and meet net zero by 2030										
B1	Use our land to improve biodiversity and restore nature, for example by revising Grounds Maintenance Contract to better reflect current good practice around mowing, wildflower planting, with signage and council tree planting and after care programme, recognising heritage grassland, implement resilience and adaptation measures in parks.	Core Aim 2	Restored, resilient and joined up nature network	TB3	Both- Adaptation & Mitigation	Cabinet member for Climate, nature, and food systems	Can be delivered using existing resources	2024 and Ongoing	Autumn tree planting project in Seaford, Lewes and Newhaven on recreation grounds in conjunction with playground improvement project. GMC contract nearing end, currently reviewing future provision. Biodiversity projects to be delivered over the coming months e.g. Landport Rec.	
B2	Monitor and report on the Biodiversity Duty (Environment Act) via the Climate and Nature Action Plan	Core Aim 2	Restored, resilient and joined up nature network		Both- Adaptation & Mitigation	Cabinet member for Climate, nature, and food systems	Can be delivered using existing resources	2026	The range of projects and programmes within this action plan demonstrates the council's commitment to working with our fantastic partners and community volunteers to restore nature at a landscape scale, alongside our achievements in applying BNG requirements to new developments within the district. There has been no further update since the Gov 2023 update and example structure that was looked at in the 'first consideration' documents.	
B3	Continue to implement our pesticide policy which means no pesticide use on District Council land except for in exceptional circumstances. Lobby East Sussex County Council to do the same	Core Aim 2	Restored, resilient and joined up nature network		Both- Adaptation & Mitigation	Cabinet member for Climate, nature, and food systems	Can be delivered using existing resources	Ongoing	Pesticide free policy continues to be adhered to.	
Actions taken by the council to ENABLE and INFLUENCE the District to become net zero carbon by 2030 and to address the ecological emergency										
B4	Use our planning policy, and work with partners (East Sussex County Council & Nature Recovery Strategy) to achieve biodiversity wording that is fit for purpose including biodiversity net gain and our aspiration for 20%, in order to arrest declines. ("Local plan policy IC3)	Core Aim 2	Restored, resilient and joined up nature network		Both- Adaptation & Mitigation	Cabinet Member for Planning & Infrastructure	Can be delivered using existing resources	2026	Policies will be drafted over the summer / Autumn and be published with the new Local Plan - (December cabinet).	
B5	Influence the development of the Sussex Local Nature Recovery Strategy so it captures our priorities	Core Aim 2	Restored, resilient and joined up nature network		Both- Adaptation & Mitigation	Cabinet member for Climate, nature, and food systems	Can be delivered using existing resources	Ongoing	Work ongoing with County Council colleagues who are lead responsible Authority for preparing the LNRS. LDC officers are active participants in the Supporting Authority Group and attend monthly workshop with Sussex Nature Partnership.	
B6	Report on Biodiversity Net Gain in all developments (aiming for 20%) over 30 years, other than those exempted by the environment	Core Aim 2	Restored, resilient and joined up nature network	TB1	Both- Adaptation & Mitigation	Cabinet Member for Planning & Infrastructure	Can be delivered using existing resources	Ongoing	Not yet started	
B7	Delivering projects with partners, including town and parish councils; to ensure a district wide approach to the wildlife crisis; supporting natural habitat creation measures	Core Aim 2	Restored, resilient and joined up nature network		Both- Adaptation & Mitigation	Cabinet member for Climate, nature, and food systems	Resources TBC on a project by project basis	Ongoing	Continue working with groups on habitat restoration e.g. Railway Land Wildlife Trust and friends of groups and tree planting with groups such as Lewes Urban Arboretum, BNG Trees, Trees for Seaford, Hansley Parish Council.	
B8	Continue to provide project support for partnerships and community nature groups, including expertise, volunteer management and fund raising support	Core Aim 2	Restored, resilient and joined up nature network		Both- Adaptation & Mitigation	Cabinet member for Climate, nature, and food systems	Can be delivered using existing resources	Ongoing	Continue working with groups on habitat restoration e.g. Railway Land Wildlife Trust and friends of groups and tree planting with groups such as Lewes Urban Arboretum, BNG Trees, Trees for Seaford, Hansley Parish Council.	
B9	Continue LDC support to partners. Partnership work to OVCA, Changing Chalk, and the Biosphere	Core Aim 2	Restored, resilient and joined up nature network		Both- Adaptation & Mitigation	Cabinet member for Climate, nature, and food systems	Can be delivered using existing resources	Ongoing	Media training delivered to OVCA groups by LDC. OVCA and Biosphere board membership and Changing Chalk project and comms support ongoing. LDC chair - Biosphere partnership meeting on rivers, October 24	
B10	Support the UNESCO review of the Brighton and Lewes Downs Biosphere (review period to 2025) and encourage an extension of the Biosphere boundary to bring in the whole of the district. The Living Coast	Core Aim 3	UNESCO Biosphere designation is retained and extended		Both- Adaptation & Mitigation	Cabinet member for Climate, nature, and food systems	Can be delivered using existing resources	Summer 25	Excellent progress. Sept 24: Final report submitted to UNESCO re renewal of the Biosphere status from 2025 for another 10 years. Extension of biosphere to include the whole of Lewes District.	
B11	Work with partners to support the Seaford to Eastbourne Nature Recovery Project	Core Aim 2	Restored, resilient and joined up nature network		Both- Adaptation & Mitigation	Cabinet member for Climate, nature, and food systems	Can be delivered using existing resources	tbc	LDC officers are engaged.	
B12	Be at the heart of partnership working on climate and nature partnership projects, including via the OVCAs climate action, as reported in their annual report	Core Aim 2	Restored, resilient and joined up nature network		Both- Adaptation & Mitigation	Cabinet member for Climate, nature, and food systems	Externally funded	2025	OVCAs annual report has not yet been published but the case studies with the update report reflect some of the projects funded and supported.	
Sustainable Food Systems										
Actions taken by the council to ENABLE and INFLUENCE the District to become net zero carbon by 2030 and to address the ecological emergency										
SF1	Explore innovative methods of supporting sustainable food production (e.g., sustainable fishing in Newhaven)	Core Aim 2 Core Aim 3	Increased sustainable food production in the district.	TSF1 TCW3	Both- Adaptation & Mitigation	*Cabinet member for Climate, nature, and food systems *Cabinet member for finance, assets and community wealth.	Investigation can be delivered using existing resources.	2025	We continue to work with the Newhaven Fishing CIC Board to promote sustainable fish products and sustainable fishing techniques.	
SF2	Investigate the potential role the council in the creation of a Greater Brighton (or East Sussex) Food Hub	Core Aim 3	Improved food resilience.		Mitigation	*Cabinet member for Climate, nature, and food systems *Cabinet member for finance, assets and community wealth.	Investigation can be delivered using existing resources.	2025	Linking with Lewes District Food Partnership to discuss local food producers and suppliers.	
SF3	Building food resilience ensuring our planning policy recognises the key role of local agriculture and horticulture and seeks to protect local food infrastructure (Policy IC1) and by supporting or publishing land sharing opportunities for new horticulture entrants.	Core Aim 3	Improved food resilience.		Mitigation	Cabinet member for Climate, nature, and food systems	Can be delivered using existing resources	Ongoing	Policies will be drafted over the summer / Autumn and be published with the new Local Plan - (December cabinet).	
SF4	Work in partnership to facilitate food growing initiatives on suitable council land, where appropriate (e.g., community growing spaces and orchards)	Core Aim 2 Core Aim 3	Increased sustainable food production in the district.		Mitigation	Cabinet member for Climate, nature, and food systems	Financial resourcing needed if leases required.	Ongoing	Community orchards have been planted in partnership with community groups & organisations on LDC land in Lewes & Seaford. A second phase of orchard planning in Peacehaven & Seaford is planned for winter 24/25.	
SF5	Support the development a food and health strategy for the new Phoenix neighbourhood in Lewes. https://humanature.co/lewes/	Core Aim 3	Strategic food systems approach achieved across the district		Both- Adaptation & Mitigation	Cabinet member for Climate, nature, and food systems	Human Nature are resourcing this project	Ongoing	Human Nature are working on a number of strategies for The Phoenix which are interdependent on completing planning permission.	
SF6	Work with Lewes District Food Partnership to implement strategic aims of championing a good food culture, fostering young peoples connections with food and develop a 'digital' approach to community food support.	Core Aim 3	Strategic food systems approach achieved across the district	TSF2	Both- Adaptation & Mitigation	Cabinet member for Climate, nature, and food systems	Resourced by LDFFP	Ongoing	LDC steering group support and promotion of aims and projects via Tenant Involvement Team, Comms and TOV.	

Reducing waste and litter									
Actions to be completed by the council to make its operations and services sustainable and meet net zero by 2030									
WR1	Ensure sustainability at events which take place on council land, including eliminating single use plastics, encouraging sustainable transport & food provision and exploring use of compost toilets	Core Aim 1 Core Aim 3	Reduced waste, increased recycling.		Mitigation	Cabinet member for Arts, Culture and Leisure & Cabinet member for neighbourhood wellbeing	Investigation can be delivered using internal resources	2025	Visit Lewes is moving away from delivering events and is focussing on enabling third parties to run their own. We encourage any organisers of events taking place on Council land to avoid SUPs and diesel generators and recommend suitable suppliers and vendors with good eco-credentials. We also advise on sustainable transport options.
WR2	Determine a way to measure waste produced on council sites and add this to scope 3 reporting, then determine ways to reduce it.	Core Aim 1	Reduced waste, increased recycling.	TRW1	Mitigation	Cabinet member for Climate, nature, and food systems	Can be delivered using existing resources	2025	Approximation is now possible (measured in litres) but we need to audit this early 2025, then determine what can be done to further reduce waste and increase recycling, and then re-audit. Monitored through the relevant performance measure and reported annually. Method needed to report construction waste for 2025.
Actions by the council to ENABLE & INFLUENCE the District to become net zero carbon by 2030									
WR3	Review waste & recycling service provision to align them with the requirements of increasing recycling and decreasing residual waste.	Core Aim 3	Reduced waste, increased recycling	TRW2	Mitigation	Cabinet member for neighbourhood wellbeing	Can be delivered using existing resources	2028	Separate food waste collection rounds to support increased recycling. (from September 2023)
WR4	Continue reduce reuse recycle (RRR) bulletins, and wider communications plan focusing on waste reduction e.g., A-Z of recycling, reducing food waste and promoting the use of food waste & recycling collection services.	Core Aim 3	Reduced waste, increased recycling Improved public realm	TRW2	Mitigation	Cabinet member for neighbourhood wellbeing	Can be delivered using existing resources	Ongoing	Promoted the use of food waste & recycling collection services through our communications and at community events. We have supported the 'Recycle Your Electricals' national campaigns.
WR5	Continue to support, promote and encourage the use of local reuse schemes and repair schemes e.g. Repair Cafes & Library of Things and community composting, which divert and reduce waste, working closely with local groups and organisations.	Core Aim 3	Encourage a local circular economy.		Mitigation	Cabinet member for neighbourhood wellbeing	Can be delivered using existing resources	Ongoing	We support and actively participate with the Seaford Environment Alliance & Lewes Climate Hub. Information stand and waste and recycling workshop at Seaford Head sustainability fair & Peasehaven zero carbon event. Waste and recycling assembly planned for Denton Primary School, this education program will be taken to other schools. Ongoing program of volunteer litter picks arranged within the district, e.g., Malling Litter pickers, Chalely litter pickers, Seaford Litter pickers and more.
WR6	To explore the licencing system to encourage litter from takeaways and fast food outlets to be minimal.	Core Aim 3	Reduced waste, increased recycling Improved public realm		Mitigation	Cabinet member for neighbourhood wellbeing	Can be delivered using existing resources	Ongoing	Licensing policy is not set to be reviewed until 2026-2027
WR7	Create opportunities to reduce littering and fly tipping and improve the public realm in collaboration with local and national partners, supporting their campaigns e.g. on disposable vapes, and through our own 'Educate Remind Enforce' campaign.	Core Aim 3	Reduced waste, increased recycling Improved public realm		Mitigation	Cabinet member for neighbourhood wellbeing	Can be delivered using existing resources	Ongoing	Neighbourhood First continue to hold local community litter picking events, run poster campaigns around dog waste, preventing litter entering the water courses and streams.
Water, rivers and seas									
Actions by the council to ENABLE and INFLUENCE the District to become net zero carbon and climate resilient by 2030									
WRS1	Develop a new high profile river/stream and nature restoration project, similar in scope to the Cocksfoot Chalk Stream Restoration Project	Core Aim 3 Core Aim 3	Mitigate and manage the risks of flooding. Seeking to use natural flood methods which often support biodiversity and increase wellbeing	TB2 TWR51 TWR52	Both- Adaptation & Mitigation	Cabinet member for Climate, nature, and food systems	Budget to be determined	2025	Cocksfoot opened 13th June. New project - Landport Brooks. Modelling work to be undertaken on downstream to inform future project
WRS2	Deliver annual programme of repairs for cliff to coastal defence assets. Commission studies where necessary to monitor and support the management of the coast in the longer term. To work with communities and relevant organisations and professionals to understand and manage the risks posed by coastal erosion and ensure adequate adaptation measures in response to climate change.	Core Aim 3	The coastline has appropriately managed defences and is adapted to climate change.	TWR53 TWR54	Adaptation	Cabinet member for Climate, nature, and food systems & Cabinet Member for Planning and Infrastructure	Will need continued resources as specified in the capital programme and other forms of funding as when appropriate.	2055	Ongoing coastal management and adaption along coast - working with partners, stakeholders and planning.
WRS3	Partnership working on natural flood management for example Sussex Wildlife Trust on the Wilder Ouse programme, and Sustainable Urban Drainage System (SUDS) e.g. Nevill project - smaller projects to follow in partnership with Ouse and Adur Rivers Trust.	Core Aim 2 Core Aim 3	Mitigate and manage the risks of flooding. Seeking to use natural flood methods which often support biodiversity and increase wellbeing.	TB2 TWR51 TWR52	Both- Adaptation & Mitigation	Cabinet member for Climate, nature, and food systems	Can be delivered using existing resources	Ongoing	Natural flood management partnership projects winter 24/25 agreed with OART and SWT as part of the programme 2023-2029. Newhaven drainage ditches, significant work undertaken.
WRS4	Hold water companies to account for example through active membership of the LCA coastal special interest group, via the Southern Water region Stakeholder Group Meeting and the council's Southern Water Panel	Core Aim 2 Core Aim 3	Improved water quality. Public health is improved.		Both- Adaptation & Mitigation	Cabinet member for Climate, nature, and food systems	Can be delivered using existing resources	Ongoing	15th October SE water consultation meeting at Marine Workshop
WRS5	Explore 'rights of rivers' with Love Our Ouse and the Ouse & Adur Catchment Partnership. Explore signing up as a Weald to Waves partner	Core Aim 2 Core Aim 3	Improved water quality		Both- Adaptation & Mitigation	Cabinet member for Climate, nature, and food systems	Can be delivered using existing resources	2025	LDC attended the first river tour event at Newhaven on Saturday 25th May. Rights of River draft charter under review with partners e.g., Environment Agency
WRS6	Ensure that planning policies and guidance reflect our strategic goals for water including avoiding sewage pollution due to new development ("policy W2) and develop guidance to meet water consumption for new builds of no more than 90 litres per day ("policy W3)	Core Aim 3	Preservation of water resources Improved water quality		Both- Adaptation & Mitigation	Cabinet Member for Planning & Infrastructure	Can be delivered using existing resources	2026	Policies will be drafted over the summer / Autumn and be published with the new Local Plan - (December cabinet).
WRS7	Ensure planning policy reflects the need to avoid inappropriate development on flood plain ("policy W1)	Core Aim 3	Mitigate and manage the risks of flooding.		Both- Adaptation & Mitigation	Cabinet Member for Planning & Infrastructure	Can be delivered using existing resources	2026	Policies will be drafted over the summer / Autumn and be published with the new Local Plan - (December cabinet).

Community wealth and wellbeing									
Actions by the council to ENABLE & INFLUENCE the District to enable a green recovery and become net zero carbon by 2030									
CW1	Implement the "LDC Community Wealth Building Strategy" to facilitate progressive procurement of goods and services, fair employment and just labour markets, socially productive use of land and assets, making financial power work for local places and plural ownership of the economy	Core Aim 3	A Just Transition Community Groups are supported as partners to achieve this strategy	TCW1	Both- Adaptation & Mitigation	Cabinet member for Finance, Assets and Community Wealth	Can be delivered using existing resources	Ongoing	A sustainable procurement policy has been produced which outlines how the council will source goods and services in a way that is sustainable, taking into account environmental, social and economic factors. A key element of the policy is that the council aims to increase the share of its local spend as a percentage of its total spend, which should help to support shorter supply chains that are more resilient and beneficial to the local economy.
CW2	Play a leadership role in developing the green skills of the future, for example...enabling partners e.g., East Sussex College Group, to deliver blue/green skills training	Core Aim 3	Local skilled workforce to fulfil roles within the green and nature economy		Both- Adaptation & Mitigation	Cabinet member for Finance, Assets and Community Wealth & Cabinet member for Climate, nature, and food systems	Can be delivered using existing resources	Ongoing	East Sussex College Group has moved into Marine Workshops at Newhaven and is offering the following courses: environmental science, biology, and marine biology and ocean ecology. This supports our ambitions for cultivating green skills for the future in our district.
CW3	Explore the development of a Blue/Green Hub at Marine Workshops and determine next steps	Core Aim 3	A Just Transition Locally owned and socially minded enterprises have been enabled Community Groups are supported as partners to achieve this strategy		Both- Adaptation & Mitigation	Cabinet member for Finance, Assets and Community Wealth & Cabinet member for Climate, nature, and food systems	Can be delivered using existing resources	Early 2025	The council has opened the Blue/Green Hub at Marine Workshops – this space enables community groups and partners in the environmental sectors to work more closely and collaboratively with each other and with the council in Newhaven
CW4	Explore the use of finances for good.	Core Aim 3	A Just Transition	TEB8	Both- Adaptation & Mitigation	Cabinet member for Finance, Assets and Community Wealth	Can be delivered using existing resources	Ongoing	In the process of exploring finances for good, in particular the potential for regional banking and its possible role in supporting climate and nature strategy.