

KEY

Lewes District Council

Parish Boundary

Quality Assessment Score

Excellent

Very Good

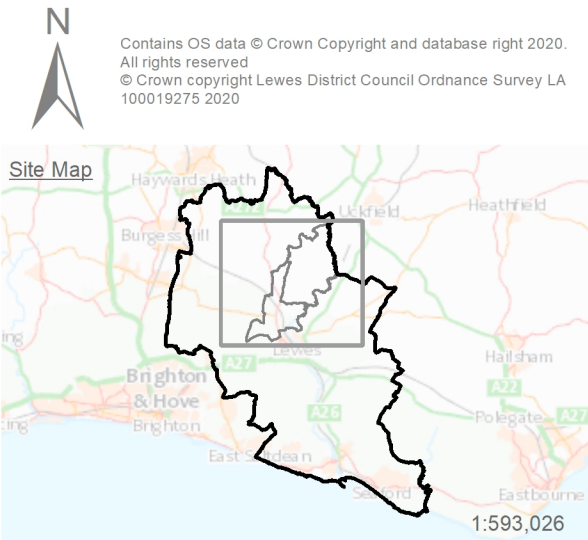
Good

Fair

Poor

Open Space Quality was assessed on criteria based on the Green Flag Award.

Quality scores are grouped as follows, based on the Green Flag grading:
90 - 100% Excellent
80 - 89% Very Good
70 - 79% Good
50 - 69% Fair
0 - 49% Poor



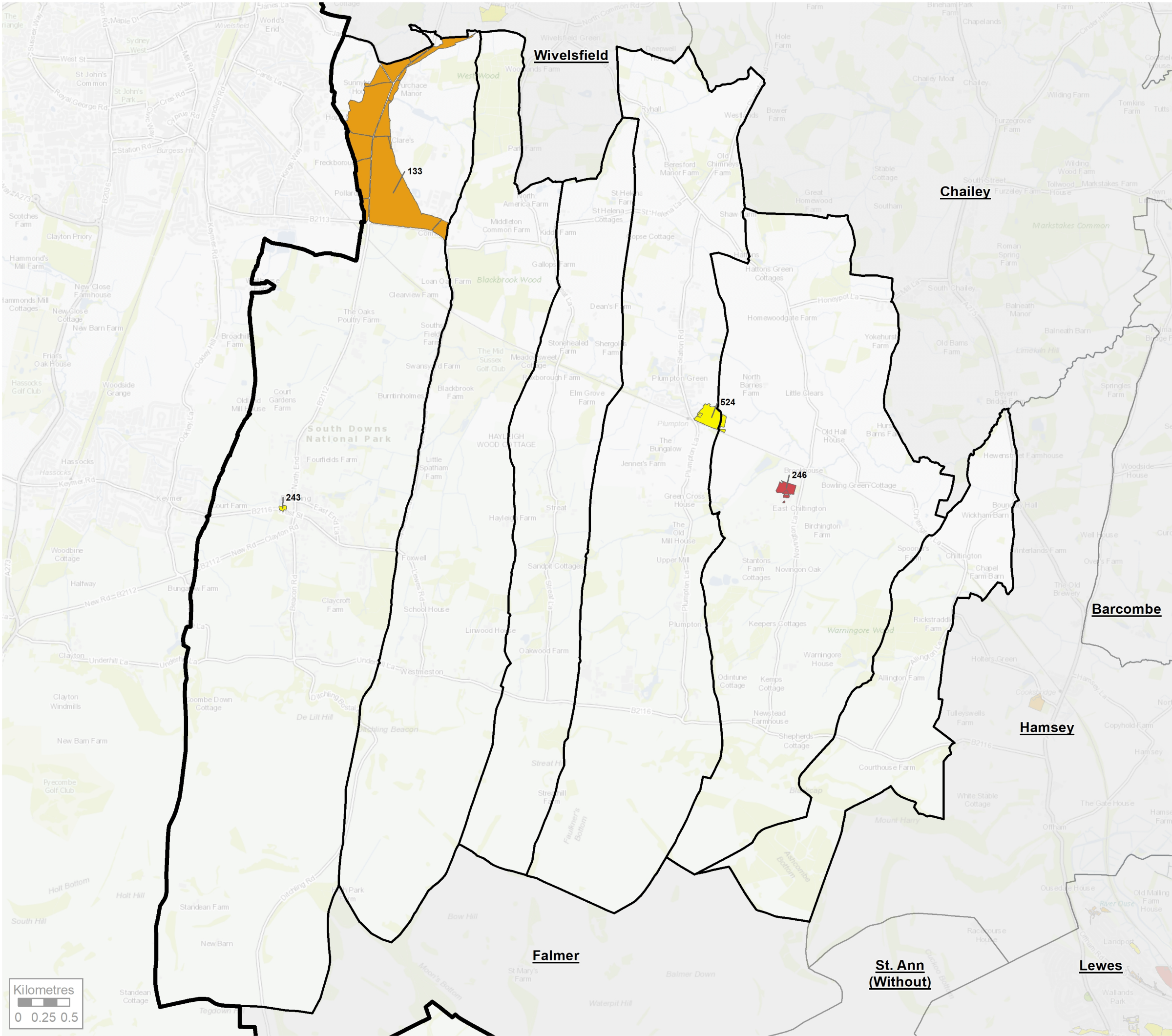
THE ENVIRONMENT PARTNERSHIP

Project
Lewes District Council Open Space Strategy

Title
Open Space Quality Assessment - Survey Results - Barcombe and Hamsey

Drawing Number
G7449.003.1

Drawn HF	Checked JO	Approved	Scale 1:35,000 @ A3	Date 28/04/2020
-------------	---------------	----------	------------------------	--------------------



KEY

Lewes District Council

Parish Boundary

Quality Assessment Score

Excellent

Very Good

Good

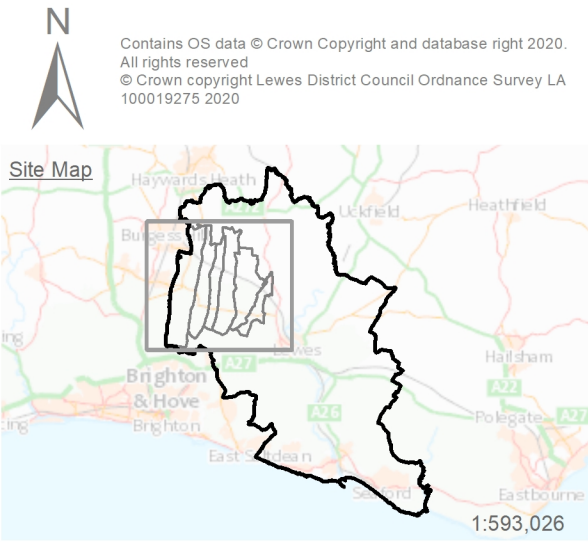
Fair

Poor

Open Space Quality was assessed on criteria based on the Green Flag Award.

Quality scores are grouped as follows, based on the Green Flag grading:

90 - 100% Excellent
80 - 89% Very Good
70 - 79% Good
50 - 69% Fair
0 - 49% Poor



THE ENVIRONMENT PARTNERSHIP

Project
Lewes District Council Open Space Strategy

Title
Open Space Quality Assessment - Survey Results - Ditchling, Westmeston, Plumpton, Streat, East Chillington and St. John (Without)

Drawing Number G7449.003.2				
Drawn HF	Checked JO	Approved	Scale 1:36,000 @ A3	Date 28/04/2020



KEY

- Lewes District Council
- Parish Boundary

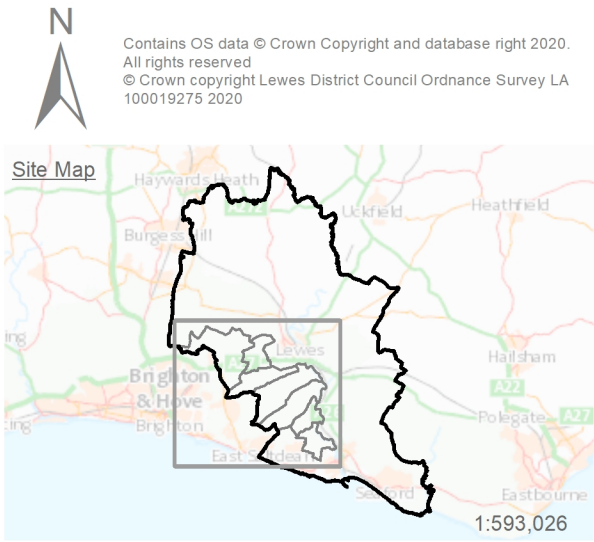
Quality Assessment Score

- Excellent
- Very Good
- Good
- Fair
- Poor

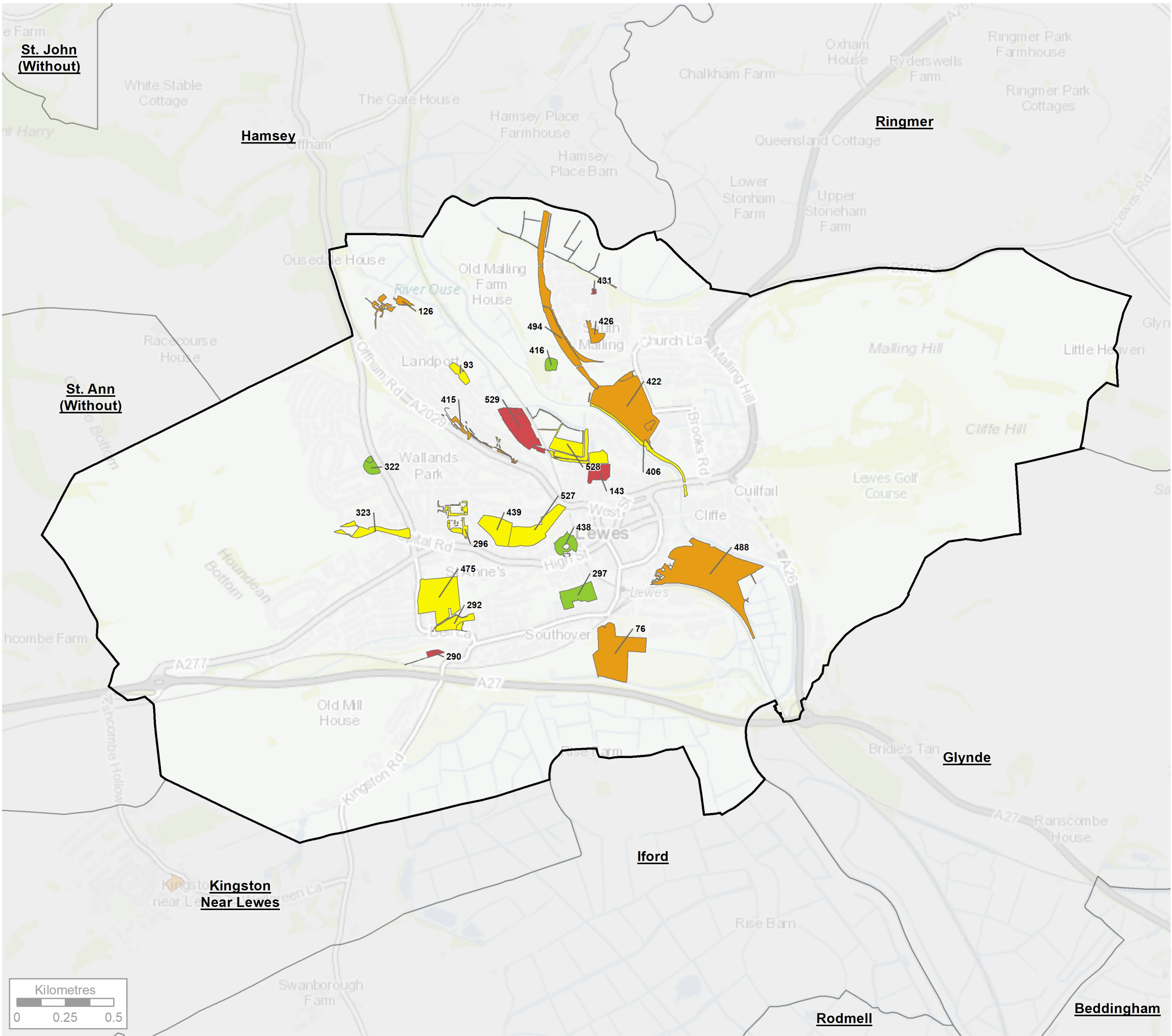
Open Space Quality was assessed on criteria based on the Green Flag Award.

Quality scores are grouped as follows, based on the Green Flag grading:

- 90 - 100% Excellent
- 80 - 89% Very Good
- 70 - 79% Good
- 50 - 69% Fair
- 0 - 49% Poor



Project Lewes District Council Open Space Strategy				
Title Open Space Quality Assessment - Survey Results - Kingston				
Drawing Number G7449.003.3				
Drawn HF	Checked JO	Approved	Scale 1:41,000 @ A3	Date 28/04/2020



KEY

- Lewes District Council
- Parish Boundary

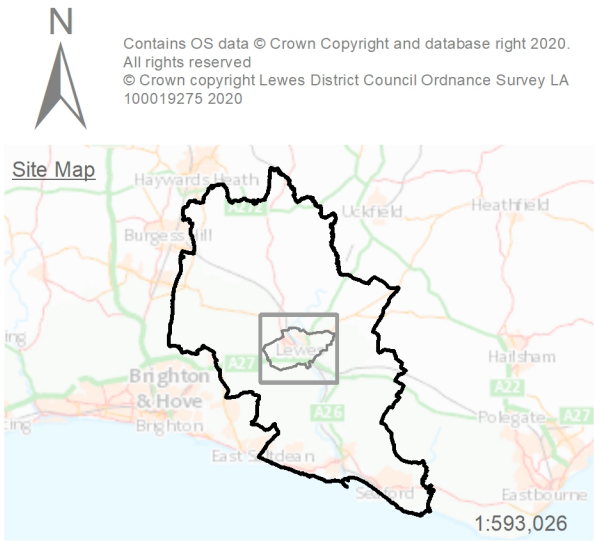
Quality Assessment Score

- Excellent
- Very Good
- Good
- Fair
- Poor

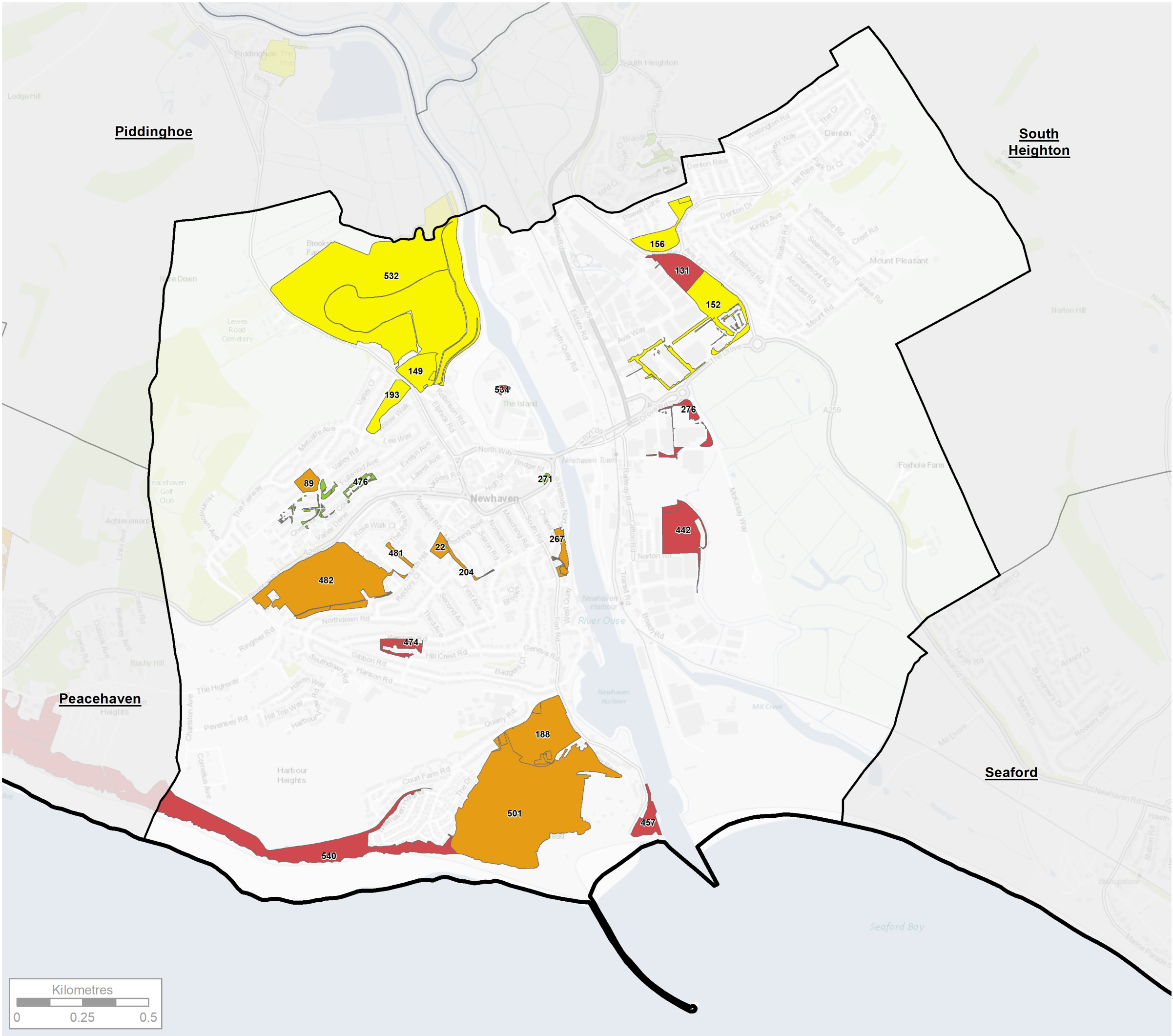
Open Space Quality was assessed on criteria based on the Green Flag Award.

Quality scores are grouped as follows, based on the Green Flag grading:

- 90 - 100% Excellent
- 80 - 89% Very Good
- 70 - 79% Good
- 50 - 69% Fair
- 0 - 49% Poor



Project Lewes District Council Open Space Strategy				
Title Open Space Quality Assessment - Survey Results - Lewes				
Drawing Number G7449.003.4				
Drawn HF	Checked JO	Approved	Scale 1:19,000 @ A3	Date 28/04/2020



KEY

- Lewes District Council
- Parish Boundary

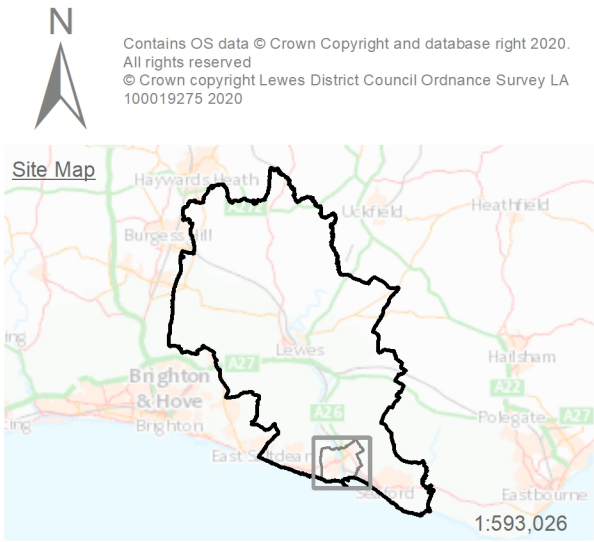
Quality Assessment Score

- Excellent
- Very Good
- Good
- Fair
- Poor

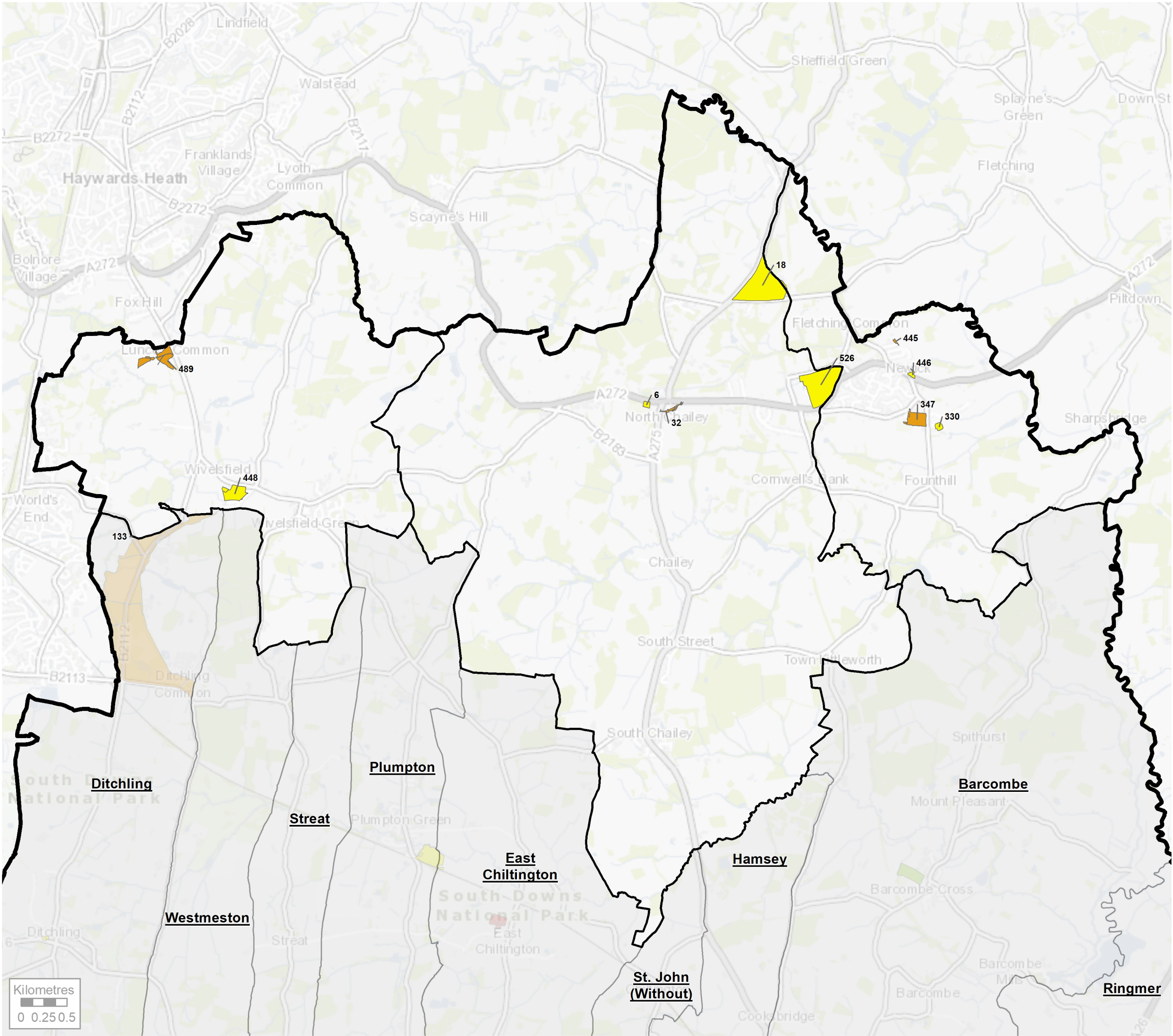
Open Space Quality was assessed on criteria based on the Green Flag Award.

Quality scores are grouped as follows, based on the Green Flag grading:

- 90 - 100% Excellent
- 80 - 89% Very Good
- 70 - 79% Good
- 50 - 69% Fair
- 0 - 49% Poor



Project Lewes District Council Open Space Strategy				
Title Open Space Quality Assessment - Survey Results - Newhaven				
Drawing Number G7449.003.5				
Drawn HF	Checked JO	Approved	Scale 1:14,000 @ A3	Date 28/04/2020



KEY

Lewes District Council

Parish Boundary

Quality Assessment Score

Excellent

Very Good

Good

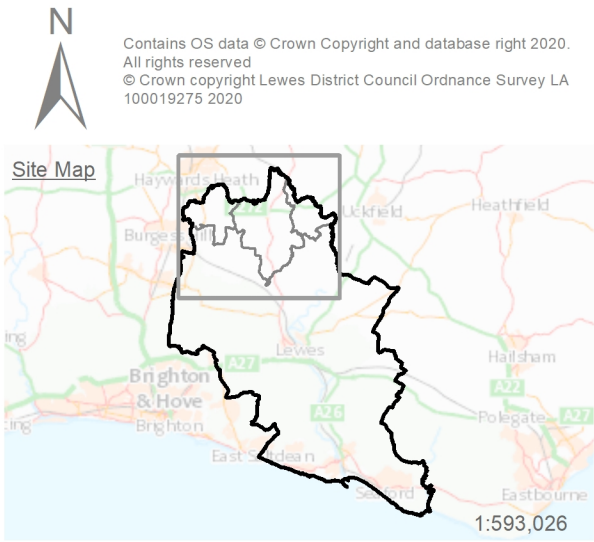
Fair

Poor

Open Space Quality was assessed on criteria based on the Green Flag Award.

Quality scores are grouped as follows, based on the Green Flag grading:

90 - 100% Excellent
80 - 89% Very Good
70 - 79% Good
50 - 69% Fair
0 - 49% Poor



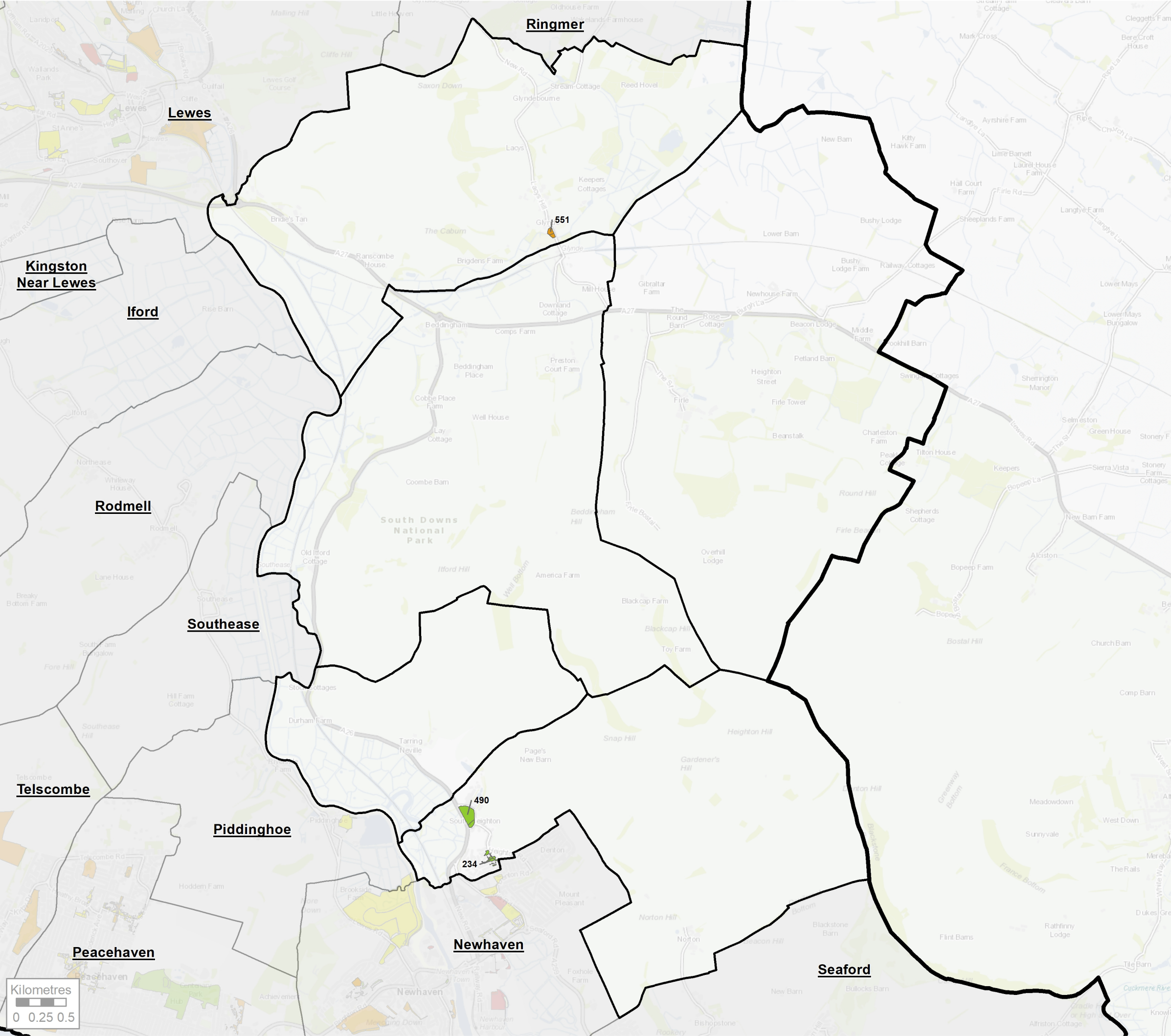
THE ENVIRONMENT PARTNERSHIP

Project
Lewes District Council Open Space Strategy

Title
Open Space Quality Assessment - Survey Results - Newick, Chailey and Wivelsfield

Drawing Number
G7449.003.6

Drawn HF	Checked JO	Approved	Scale 1:40,000 @ A3	Date 28/04/2020
-------------	---------------	----------	------------------------	--------------------



KEY

Lewes District Council

Parish Boundary

Quality Assessment Score

Excellent

Very Good

Good

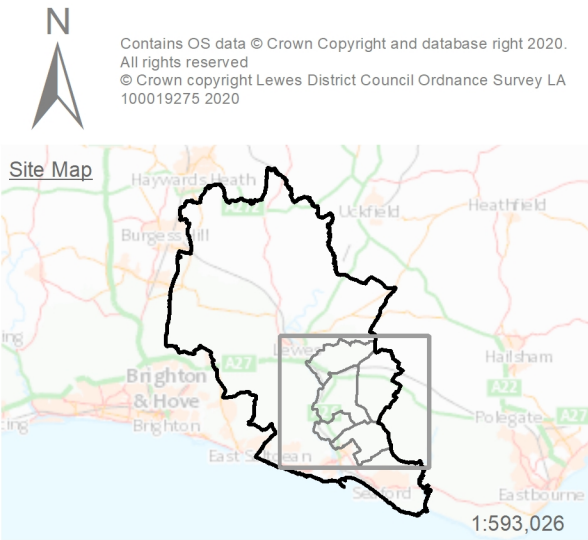
Fair

Poor

Open Space Quality was assessed on criteria based on the Green Flag Award.

Quality scores are grouped as follows, based on the Green Flag grading:

90 - 100% Excellent
80 - 89% Very Good
70 - 79% Good
50 - 69% Fair
0 - 49% Poor

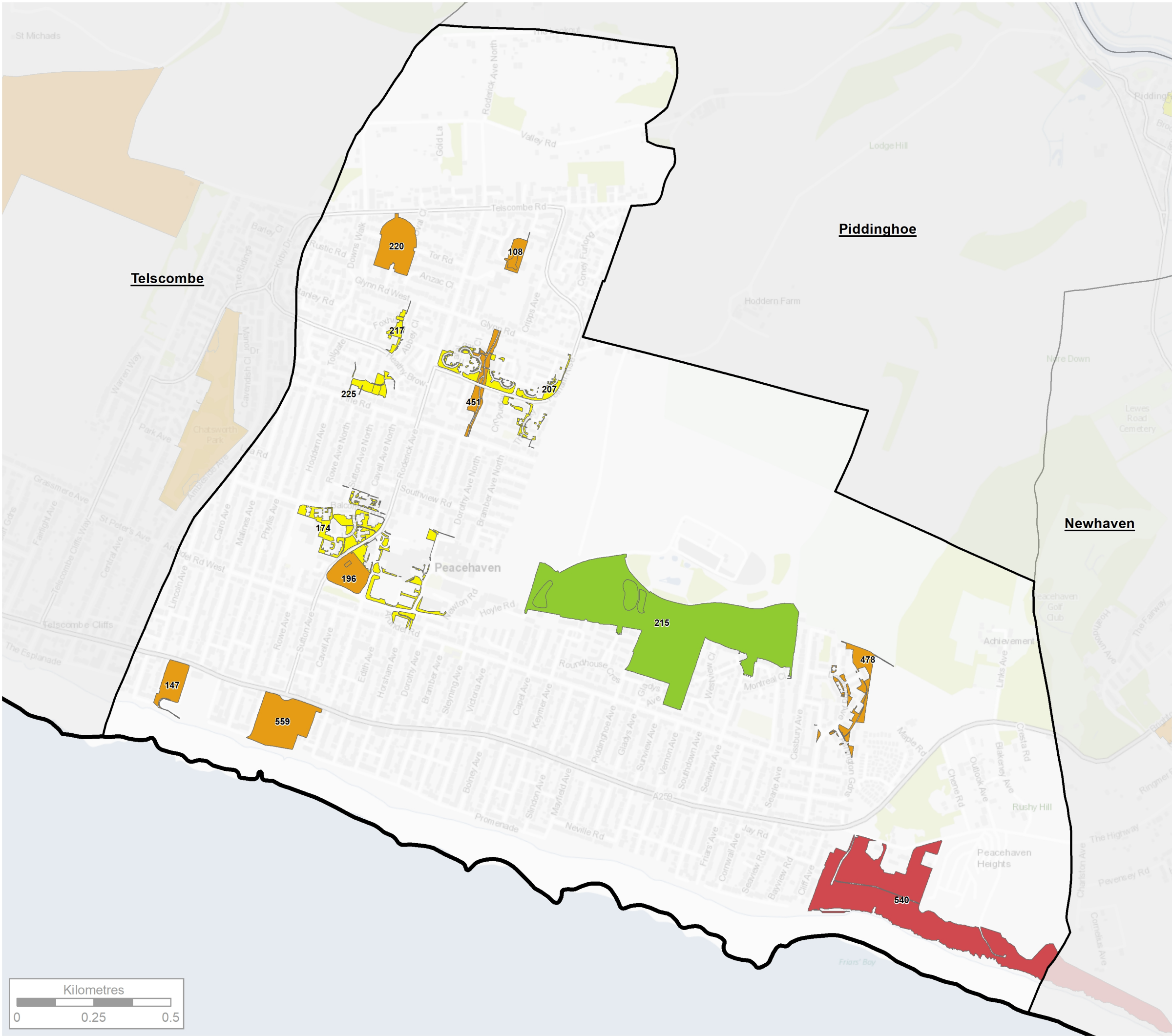


THE ENVIRONMENT PARTNERSHIP

Project
Lewes District Council Open Space Strategy

Title
Open Space Quality Assessment - Survey Results - Ouse Valley

Drawing Number G7449.003.7				
Drawn HF	Checked JO	Approved	Scale 1:37,000 @ A3	Date 28/04/2020



KEY

Lewes District Council

Parish Boundary

Quality Assessment Score

Excellent

Very Good

Good

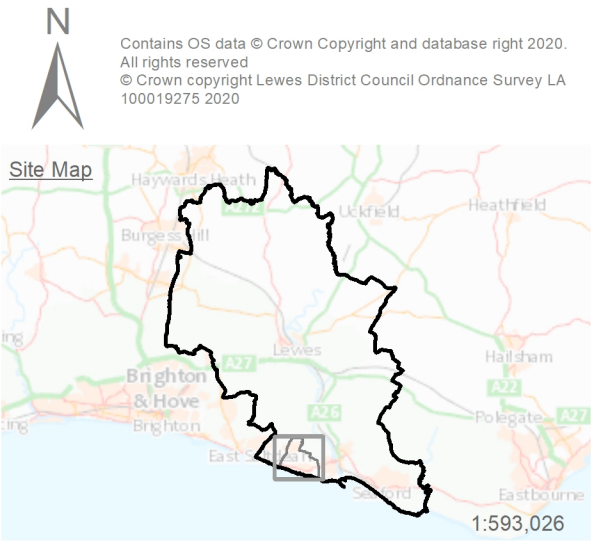
Fair

Poor

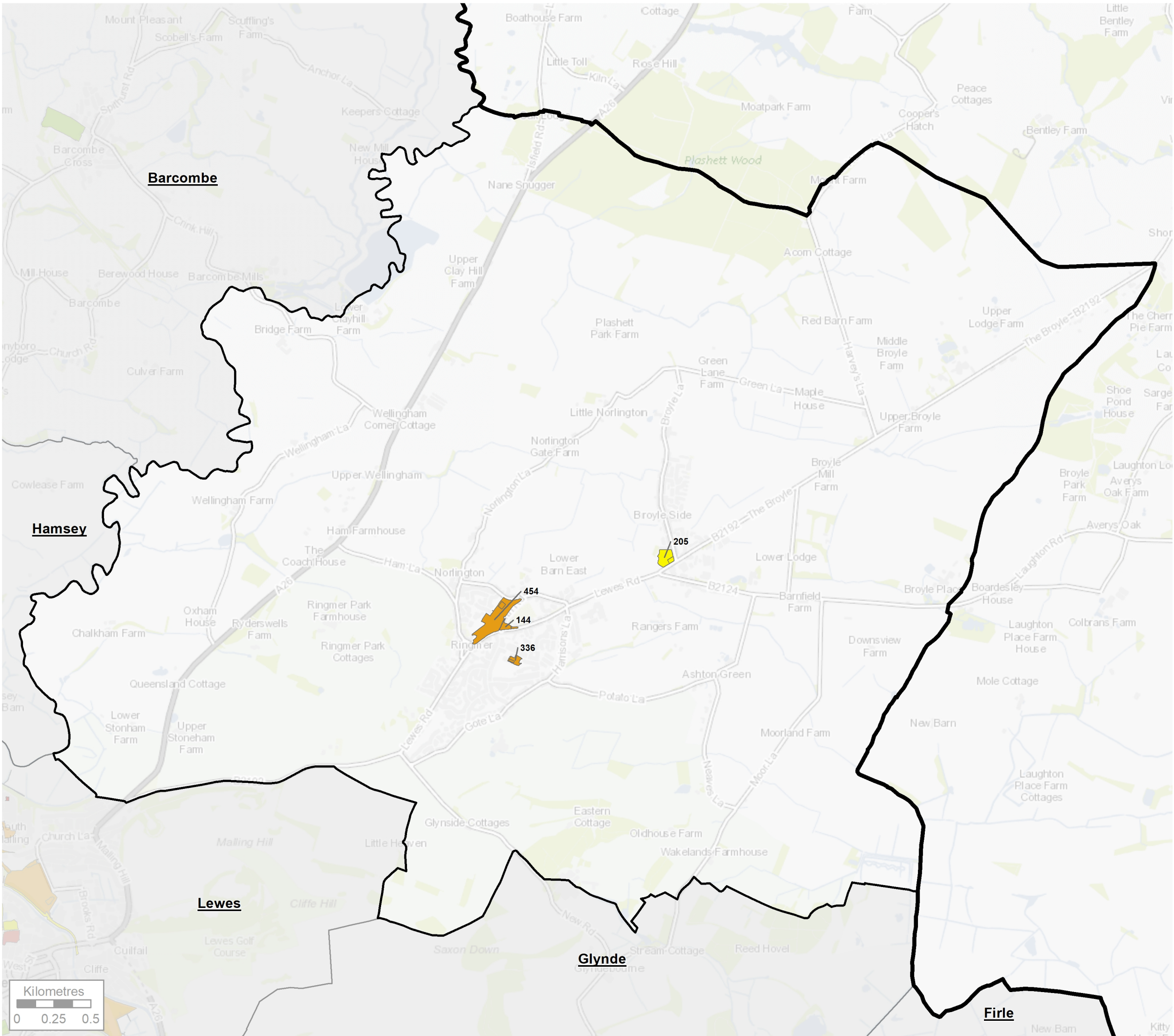
Open Space Quality was assessed on criteria based on the Green Flag Award.

Quality scores are grouped as follows, based on the Green Flag grading:

90 - 100% Excellent
80 - 89% Very Good
70 - 79% Good
50 - 69% Fair
0 - 49% Poor



Project Lewes District Council Open Space Strategy				
Title Open Space Quality Assessment - Survey Results - Peacehaven				
Drawing Number G7449.003.8				
Drawn HF	Checked JO	Approved	Scale 1:12,000 @ A3	Date 28/04/2020



KEY

- Lewes District Council
- Parish Boundary

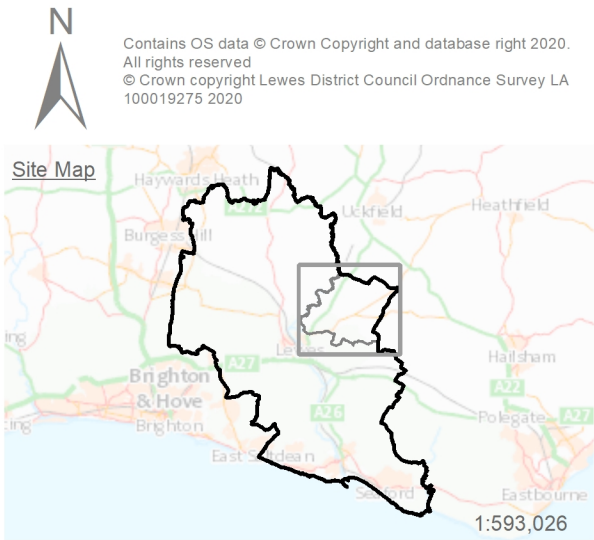
Quality Assessment Score

- Excellent
- Very Good
- Good
- Fair
- Poor

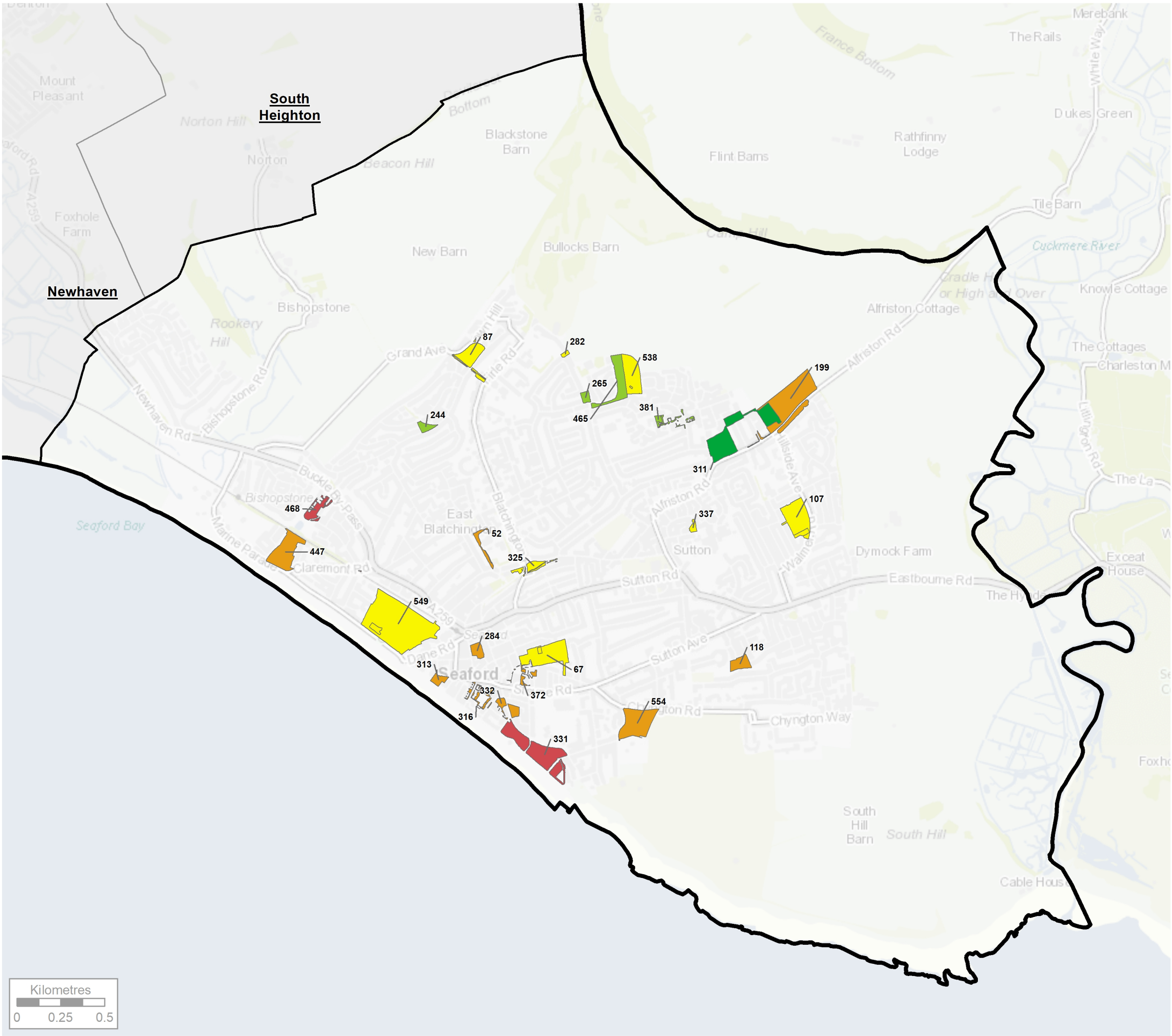
Open Space Quality was assessed on criteria based on the Green Flag Award.

Quality scores are grouped as follows, based on the Green Flag grading:

- 90 - 100% Excellent
- 80 - 89% Very Good
- 70 - 79% Good
- 50 - 69% Fair
- 0 - 49% Poor



Project Lewes District Council Open Space Strategy				
Title Open Space Quality Assessment - Survey Results - Ringmer				
Drawing Number G7449.003.9				
Drawn HF	Checked JO	Approved	Scale 1:25,000 @ A3	Date 28/04/2020



KEY

Lewes District Council

Parish Boundary

Quality Assessment Score

Excellent

Very Good

Good

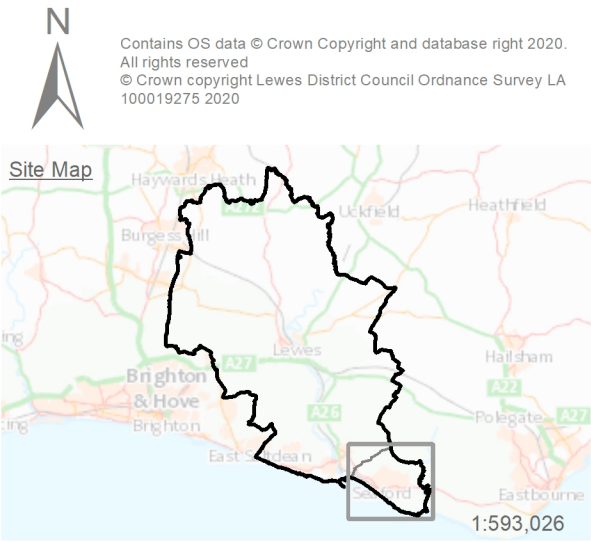
Fair

Poor

Open Space Quality was assessed on criteria based on the Green Flag Award.

Quality scores are grouped as follows, based on the Green Flag grading:

90 - 100% Excellent
80 - 89% Very Good
70 - 79% Good
50 - 69% Fair
0 - 49% Poor

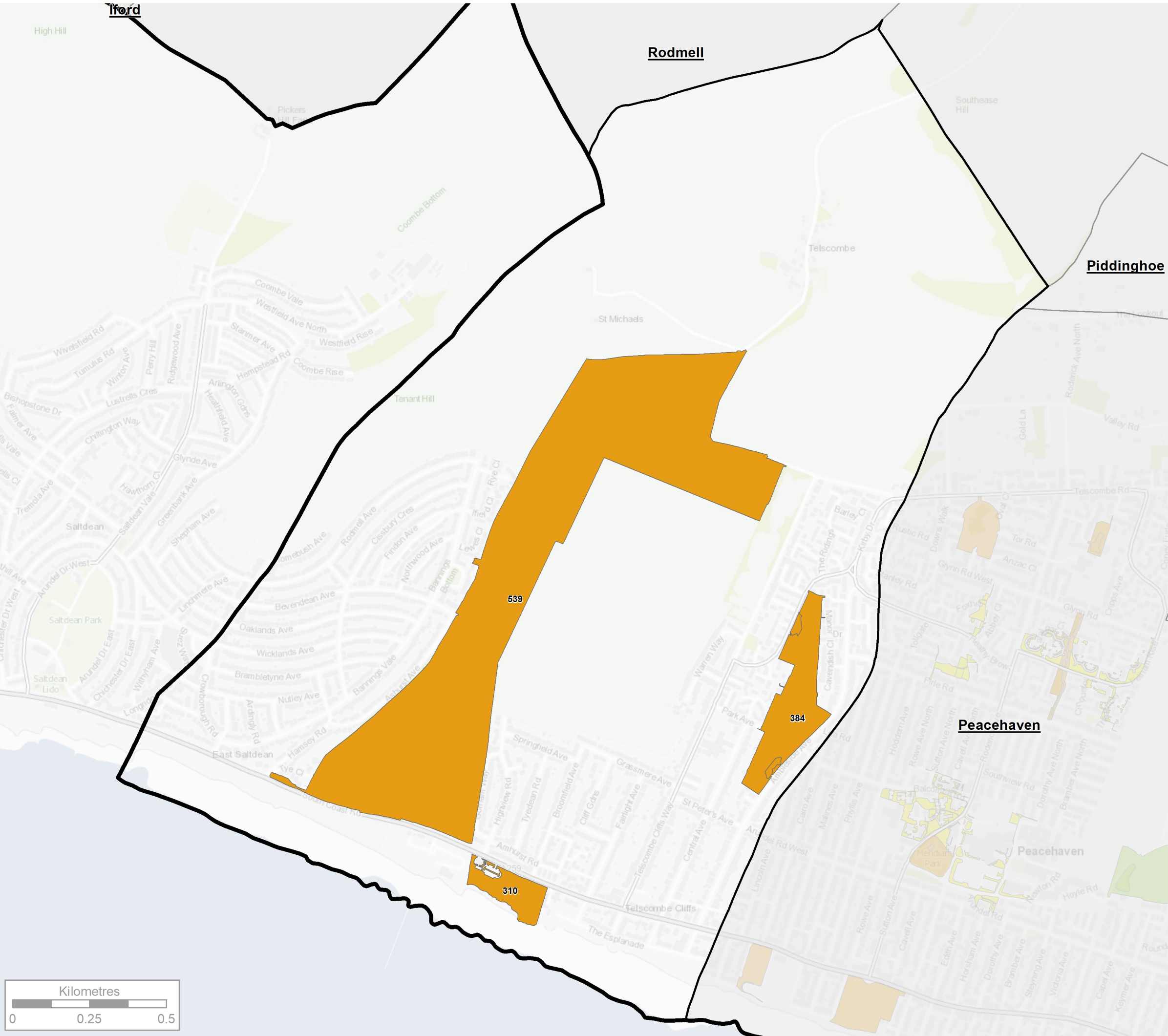


THE ENVIRONMENT PARTNERSHIP

Project
Lewes District Council Open Space Strategy

Title
Open Space Quality Assessment - Survey Results - Seaford

Drawing Number G7449.003.10				
Drawn HF	Checked JO	Approved	Scale 1:21,000 @ A3	Date 28/04/2020



KEY

- Lewes District Council
- Parish Boundary

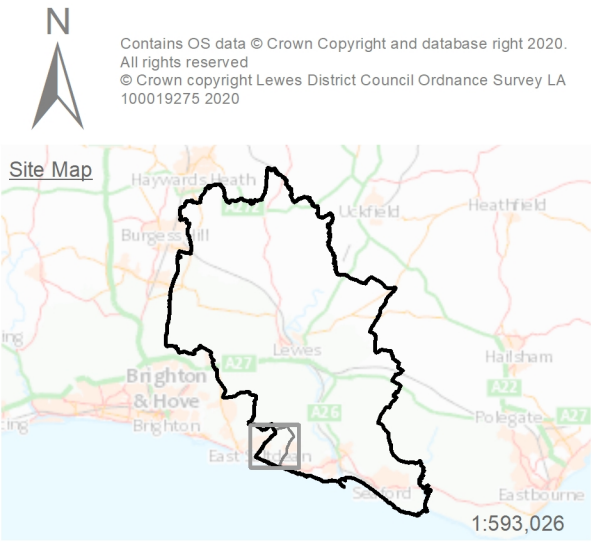
Quality Assessment Score

- Excellent
- Very Good
- Good
- Fair
- Poor

Open Space Quality was assessed on criteria based on the Green Flag Award.

Quality scores are grouped as follows, based on the Green Flag grading:

- 90 - 100% Excellent
- 80 - 89% Very Good
- 70 - 79% Good
- 50 - 69% Fair
- 0 - 49% Poor





Project Lewes District Council Open Space Strategy				
Title Open Space Quality Assessment - Survey Results - Telscombe				
Drawing Number G7449.003.11				
Drawn HF	Checked JO	Approved	Scale 1:12,000 @ A3	Date 28/04/2020