

KEY

Lewes District Council

Parish Boundary

Value Assessment Score

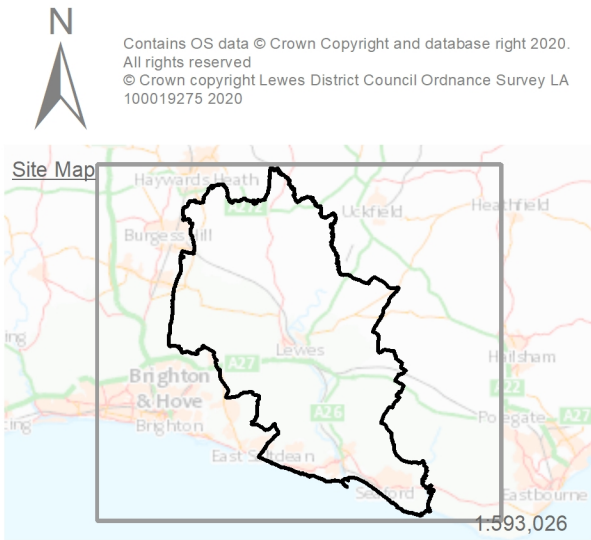
High

Medium

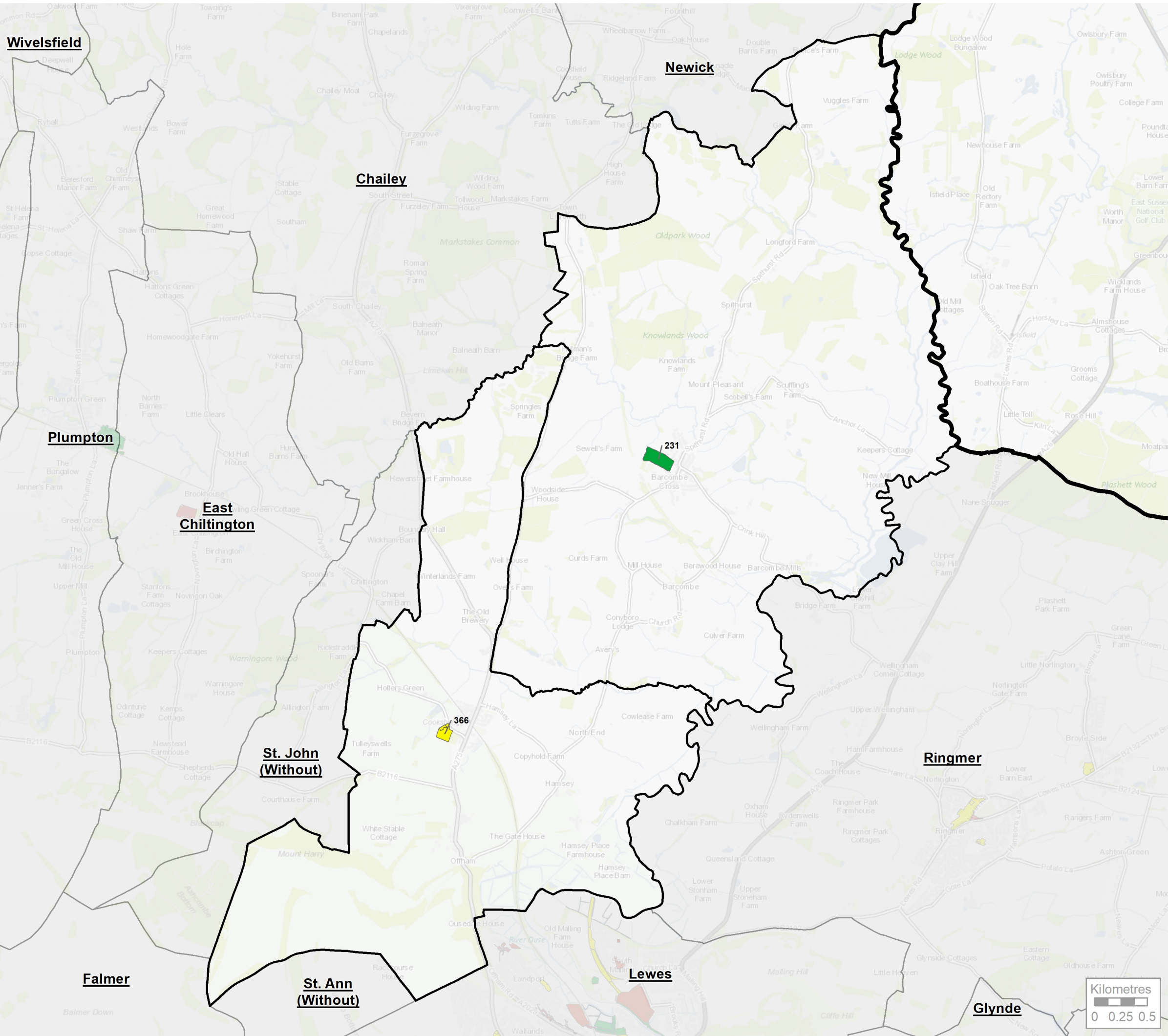
Low

Open Space Value was assessed on a series of Landscape Values.

Value scores are grouped as follows:
60 - 100% High
40 - 59% Medium
0 - 39% Low



Project Lewes District Council Open Space Strategy				
Title Open Space Value Assessment - Survey Results				
Drawing Number G7449.004				
Drawn HF	Checked JO	Approved	Scale 1:100,000 @ A3	Date 28/04/2020



KEY

Lewes District Council

Parish Boundary

Value Assessment Score

High

Medium

Low

Open Space Value was assessed on a series of Landscape Values.

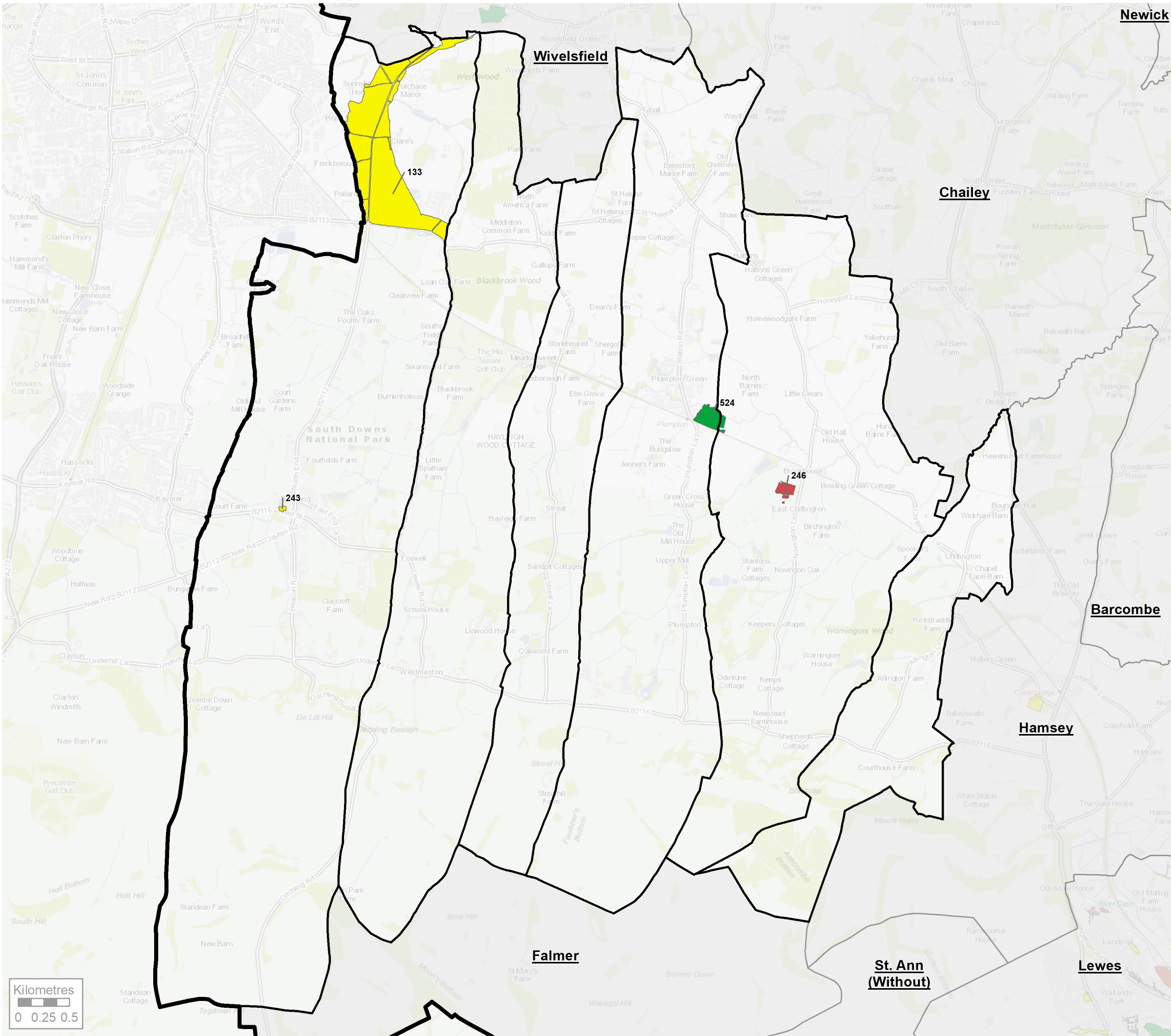
Value scores are grouped as follows:
60 - 100% High
40 - 59% Medium
0 - 39% Low

Contains OS data © Crown Copyright and database right 2020.
All rights reserved
© Crown copyright Lewes District Council Ordnance Survey LA 100019275 2020

Site Map

THE ENVIRONMENT PARTNERSHIP

Project Lewes District Council Open Space Strategy				
Title Open Space Value Assessment - Survey Results - Barcombe and Hamsey				
Drawing Number G7449.004.1				
Drawn HF	Checked JO	Approved	Scale 1:35,000 @ A3	Date 28/04/2020



KEY

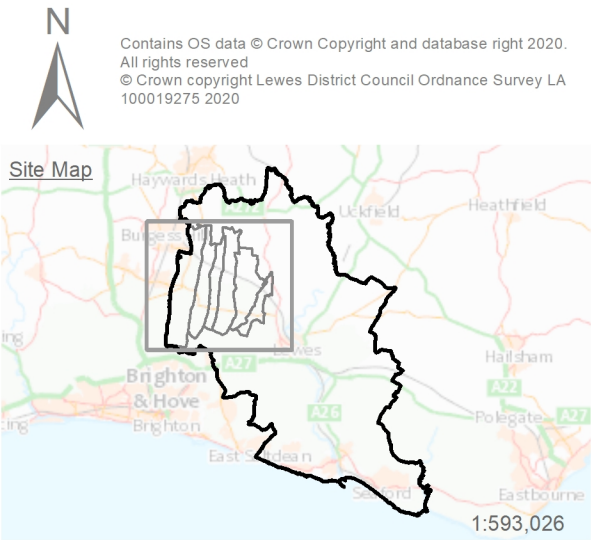
- Lewes District Council
- Parish Boundary

Value Assessment Score

- High
- Medium
- Low

Open Space Value was assessed on a series of Landscape Values.

Value scores are grouped as follows:
60 - 100% High
40 - 59% Medium
0 - 39% Low



Project Lewes District Council Open Space Strategy				
Title Open Space Value Assessment - Survey Results - Ditchling, Westmeston, Plumpton, Streat, East Chilmington and St. John (Without)				
Drawing Number G7449.004.2				
Drawn HF	Checked JO	Approved	Scale 1:36,000 @ A3	Date 28/04/2020



KEY

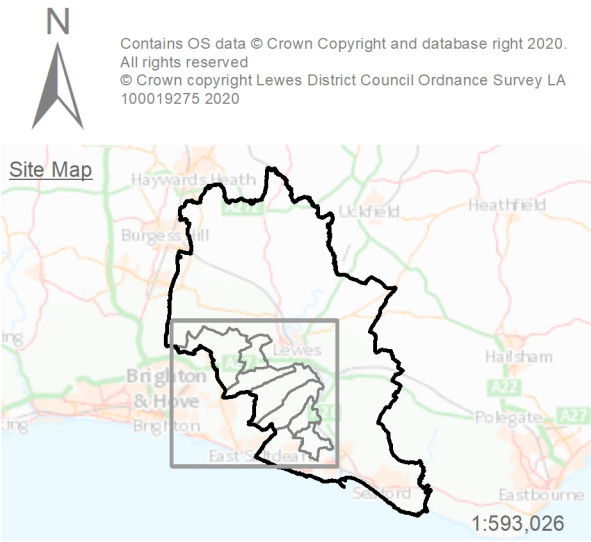
- Lewes District Council
- Parish Boundary

Value Assessment Score

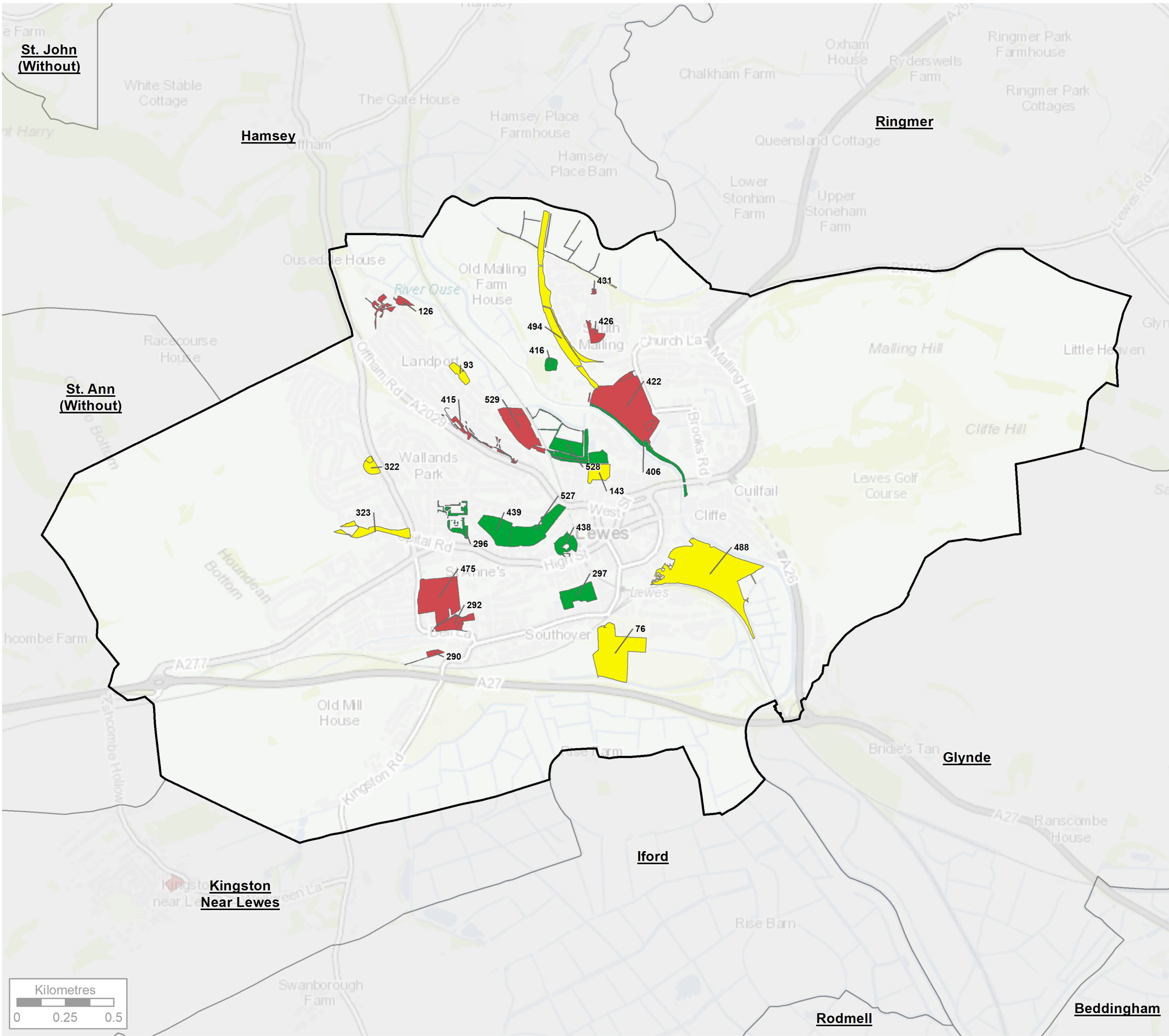
- High
- Medium
- Low

Open Space Value was assessed on a series of Landscape Values.

Value scores are grouped as follows:
60 - 100% High
40 - 59% Medium
0 - 39% Low



Project Lewes District Council Open Space Strategy				
Title Open Space Value Assessment - Survey Results - Kingston				
Drawing Number G7449.004.3				
Drawn HF	Checked JO	Approved	Scale 1:41,000 @ A3	Date 28/04/2020



KEY

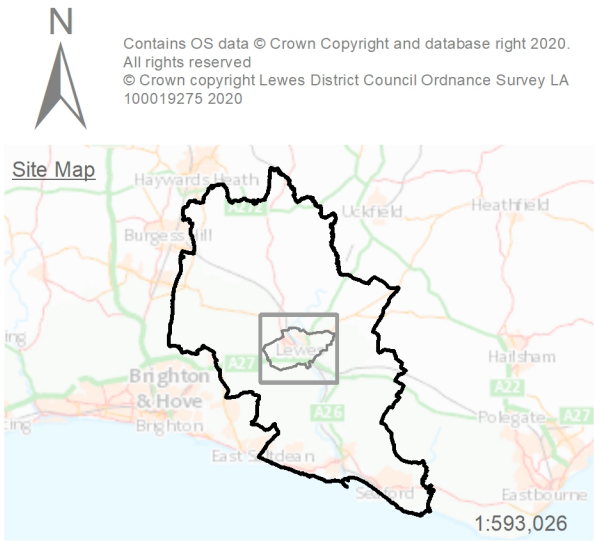
- Lewes District Council
- Parish Boundary

Value Assessment Score

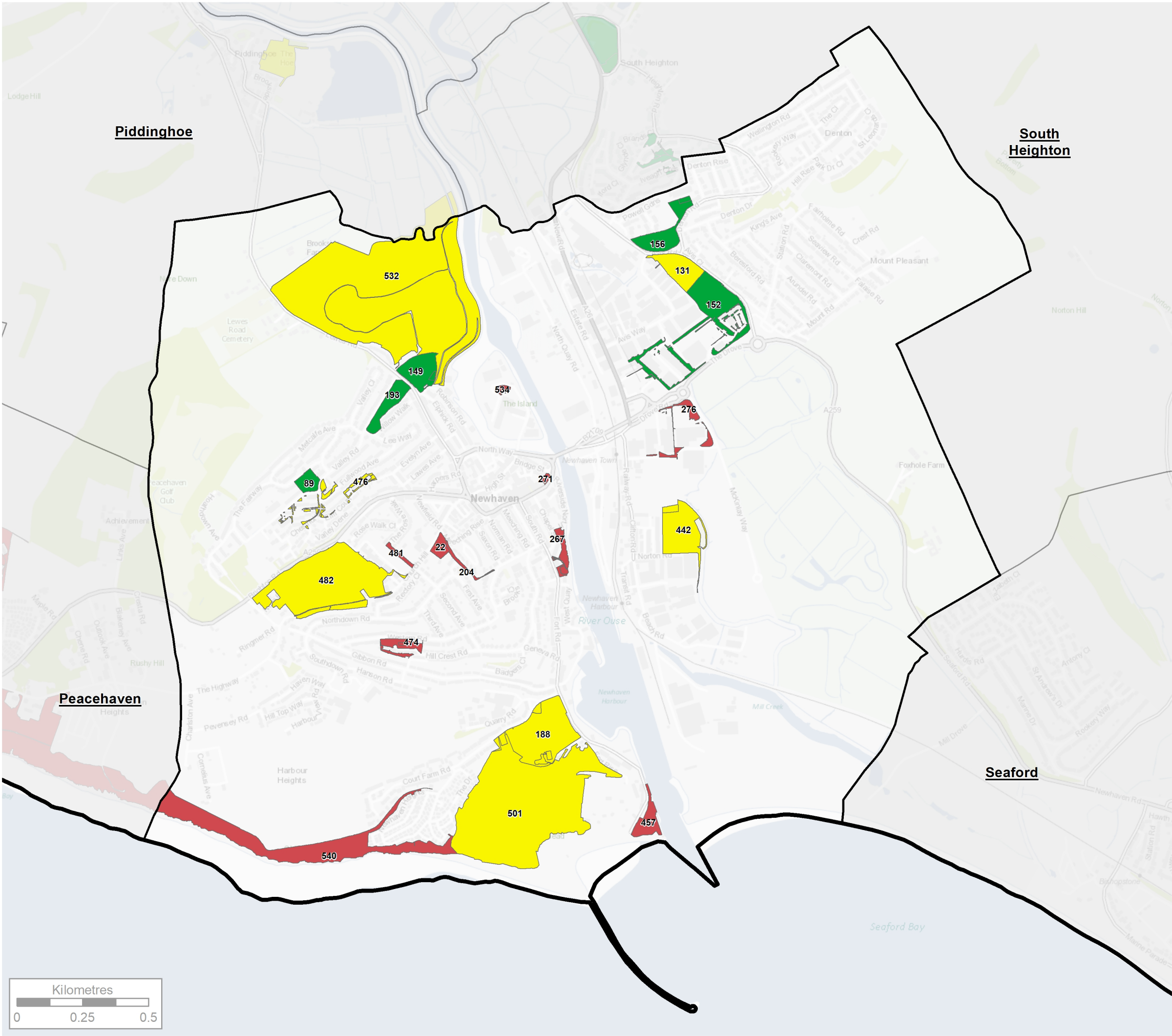
- High
- Medium
- Low

Open Space Value was assessed on a series of Landscape Values.

Value scores are grouped as follows:
60 - 100% High
40 - 59% Medium
0 - 39% Low



Project Lewes District Council Open Space Strategy				
Title Open Space Value Assessment - Survey Results - Lewes				
Drawing Number G7449.004.4				
Drawn HF	Checked JO	Approved	Scale 1:19,000 @ A3	Date 28/04/2020



KEY

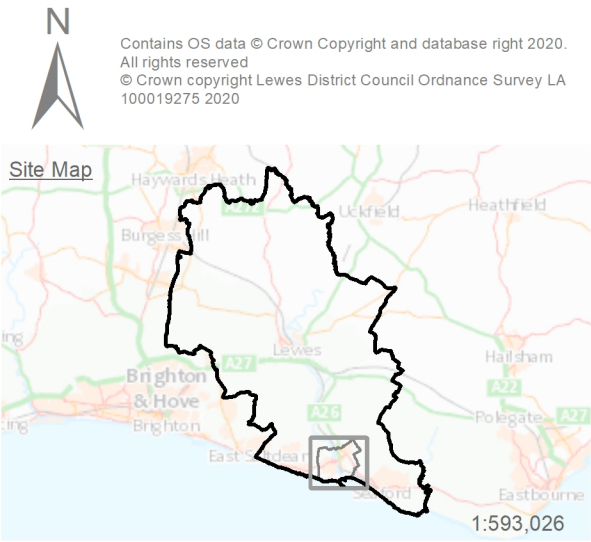
- Lewes District Council
- Parish Boundary

Value Assessment Score

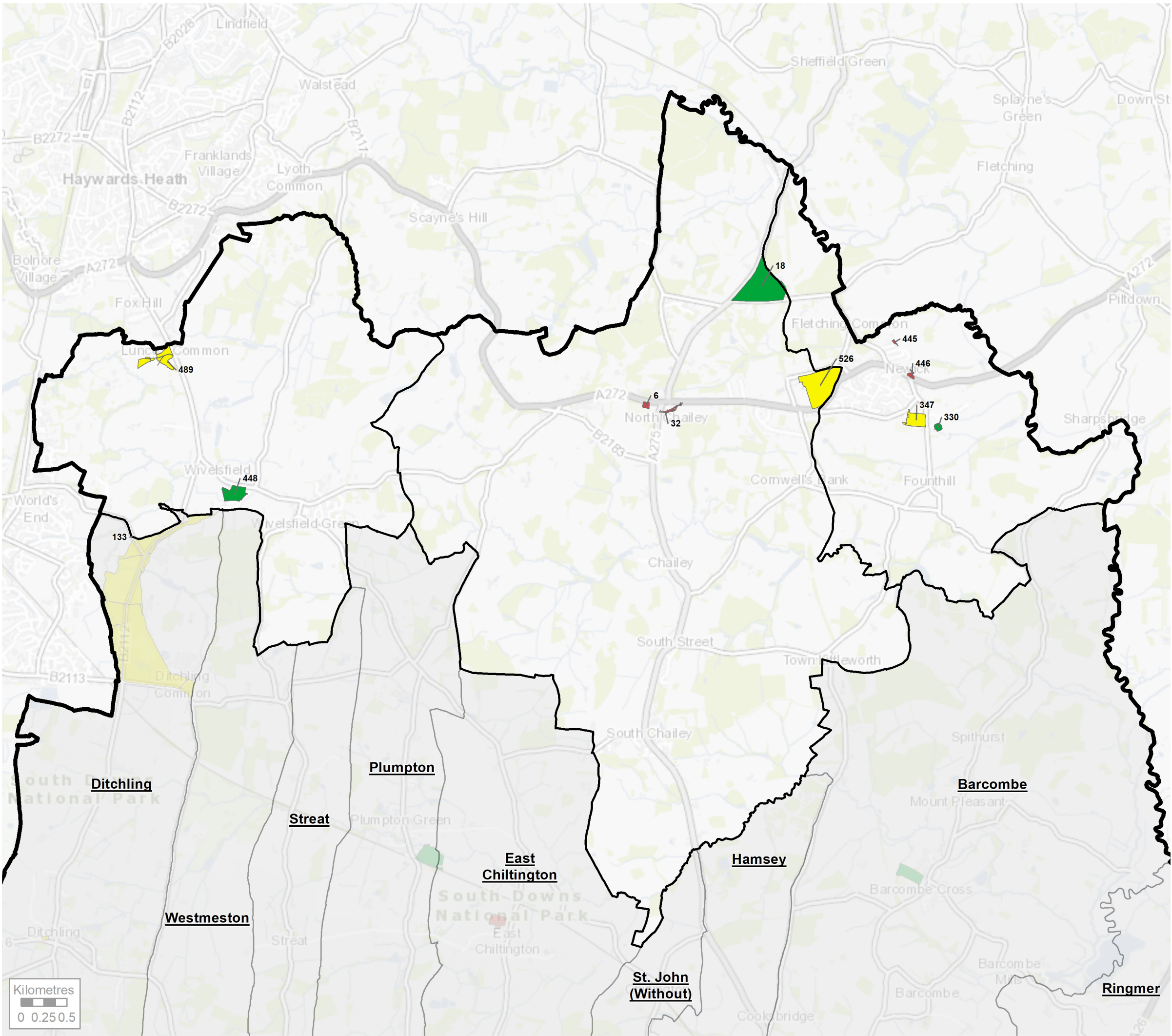
- High
- Medium
- Low

Open Space Value was assessed on a series of Landscape Values.

Value scores are grouped as follows:
60 - 100% High
40 - 59% Medium
0 - 39% Low



Project Lewes District Council Open Space Strategy				
Title Open Space Value Assessment - Survey Results - Newhaven				
Drawing Number G7449.004.5				
Drawn HF	Checked JO	Approved	Scale 1:14,000 @ A3	Date 28/04/2020



KEY

Lewes District Council

Parish Boundary

Value Assessment Score

High

Medium

Low

Open Space Value was assessed on a series of Landscape Values.

Value scores are grouped as follows:
60 - 100% High
40 - 59% Medium
0 - 39% Low

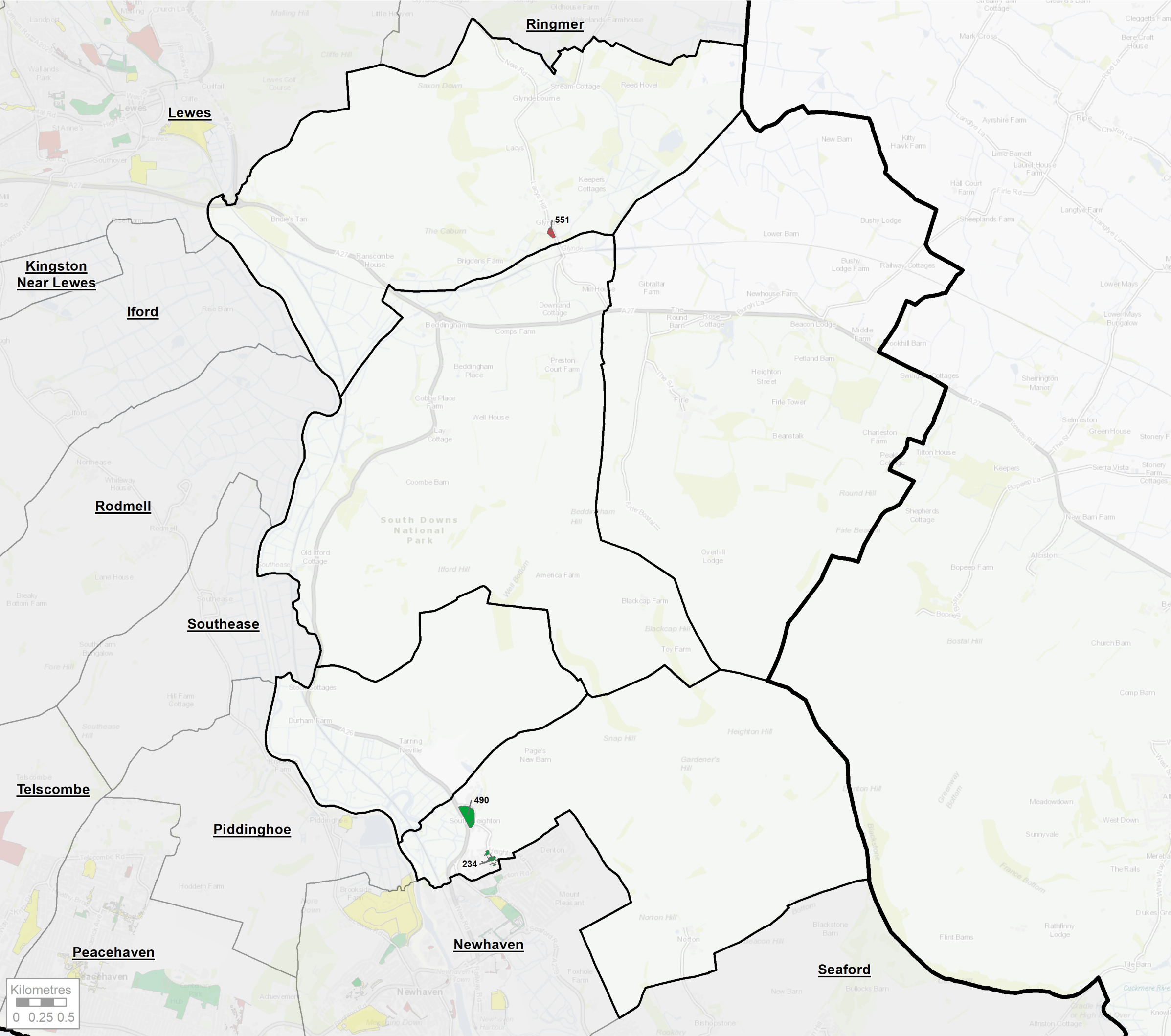
Contains OS data © Crown Copyright and database right 2020.
All rights reserved
© Crown copyright Lewes District Council Ordnance Survey LA 100019275 2020

Site Map

1:593,026

THE ENVIRONMENT PARTNERSHIP

Project Lewes District Council Open Space Strategy				
Title Open Space Value Assessment - Survey Results - Newick, Chailey and Wivelsfield				
Drawing Number G7449.004.6				
Drawn HF	Checked JO	Approved	Scale 1:40,000 @ A3	Date 28/04/2020



KEY

Lewes District Council

Parish Boundary

Value Assessment Score

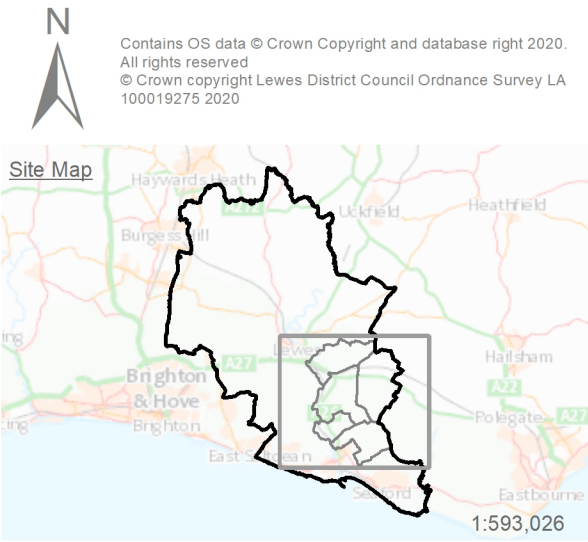
High

Medium

Low

Open Space Value was assessed on a series of Landscape Values.

Value scores are grouped as follows:
60 - 100% High
40 - 59% Medium
0 - 39% Low

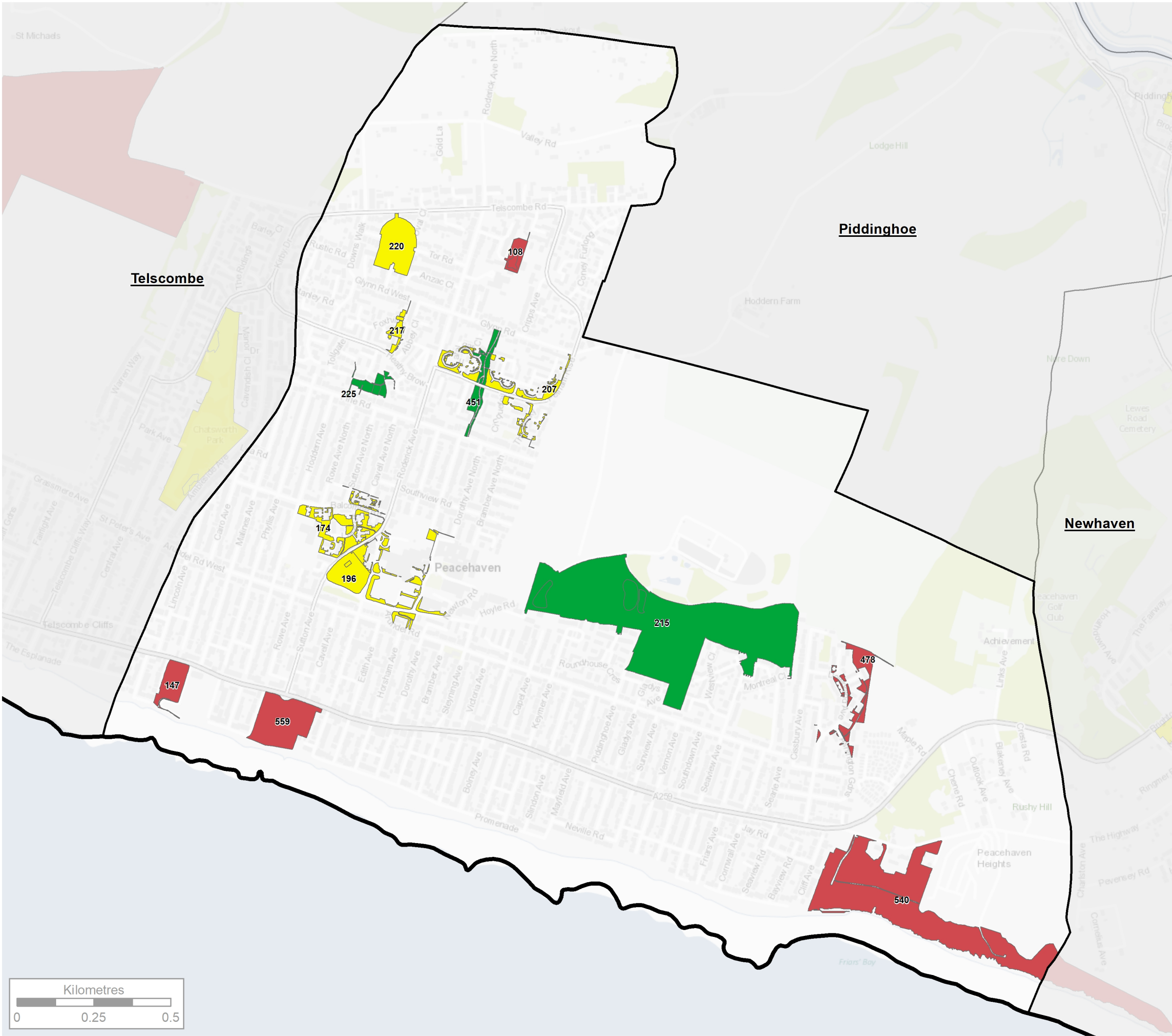


THE ENVIRONMENT PARTNERSHIP

Project
Lewes District Council Open Space Strategy

Title
Open Space Value Assessment - Survey Results - Ouse Valley

Drawing Number G7449.004.7				
Drawn HF	Checked JO	Approved	Scale 1:37,000 @ A3	Date 28/04/2020



KEY

Lewes District Council

Parish Boundary

Value Assessment Score

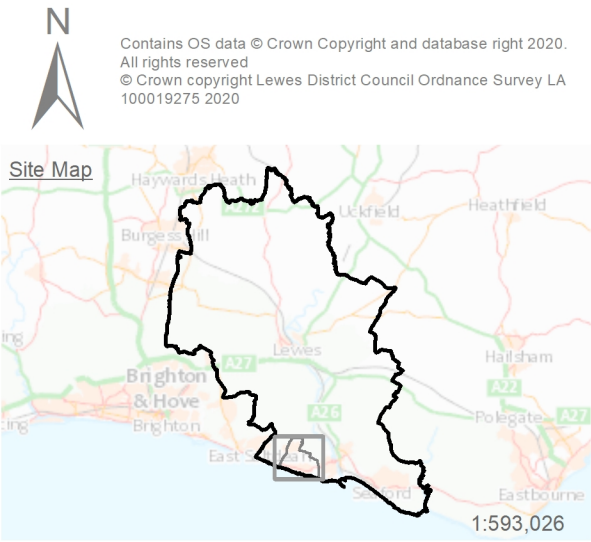
High

Medium

Low

Open Space Value was assessed on a series of Landscape Values.

Value scores are grouped as follows:
60 - 100% High
40 - 59% Medium
0 - 39% Low



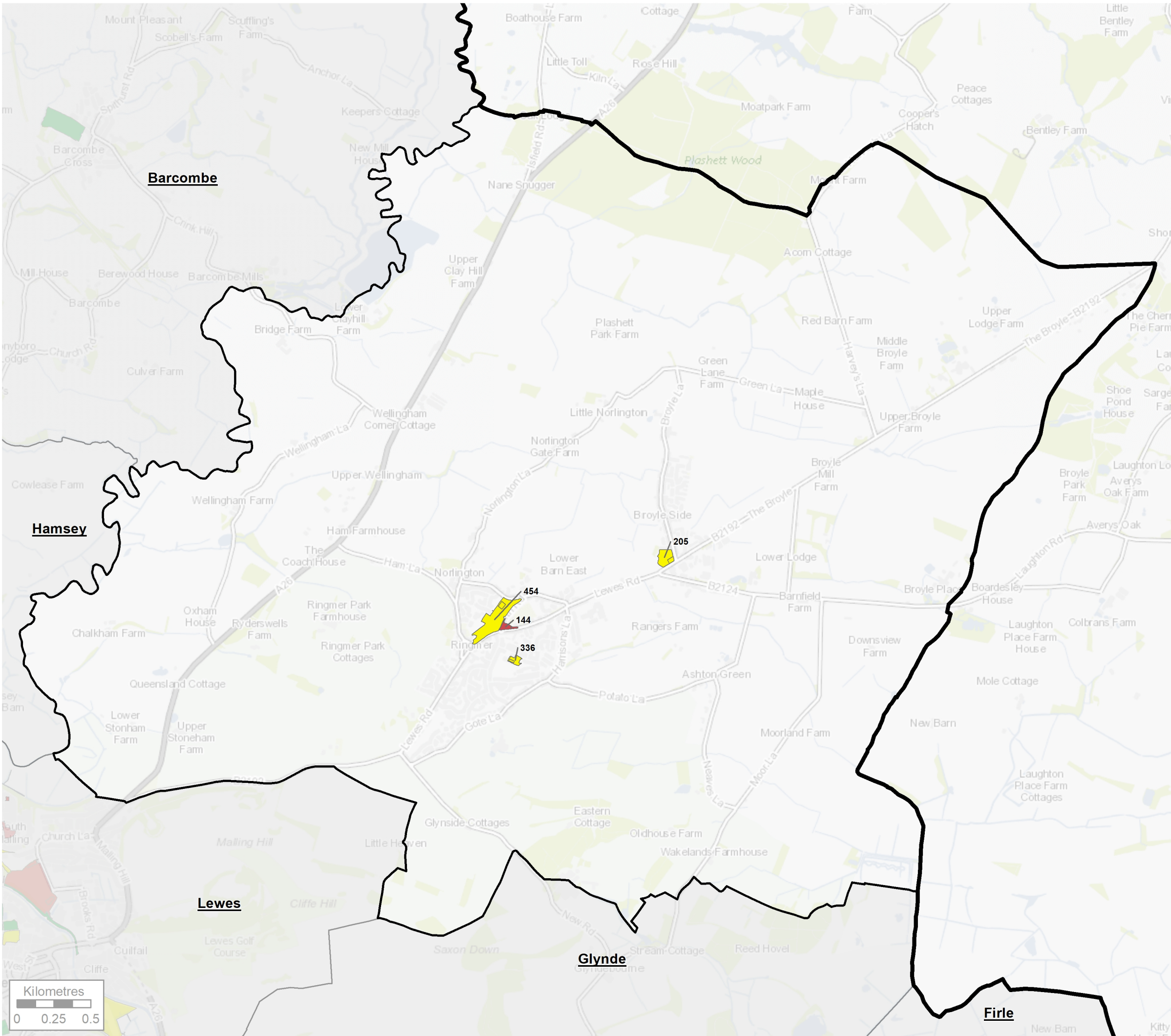
THE ENVIRONMENT PARTNERSHIP

Project
Lewes District Council Open Space Strategy

Title
Open Space Value Assessment - Survey Results - Peacehaven

Drawing Number
G7449.004.8

Drawn HF	Checked JO	Approved	Scale 1:12,000 @ A3	Date 28/04/2020
-------------	---------------	----------	------------------------	--------------------



KEY

Lewes District Council

Parish Boundary

Value Assessment Score

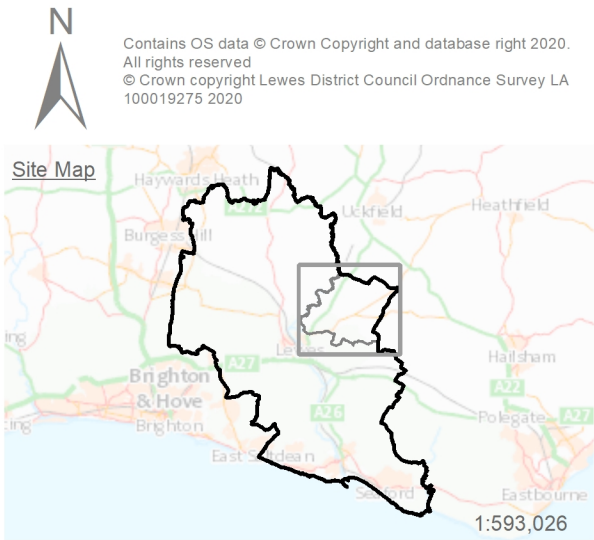
High

Medium

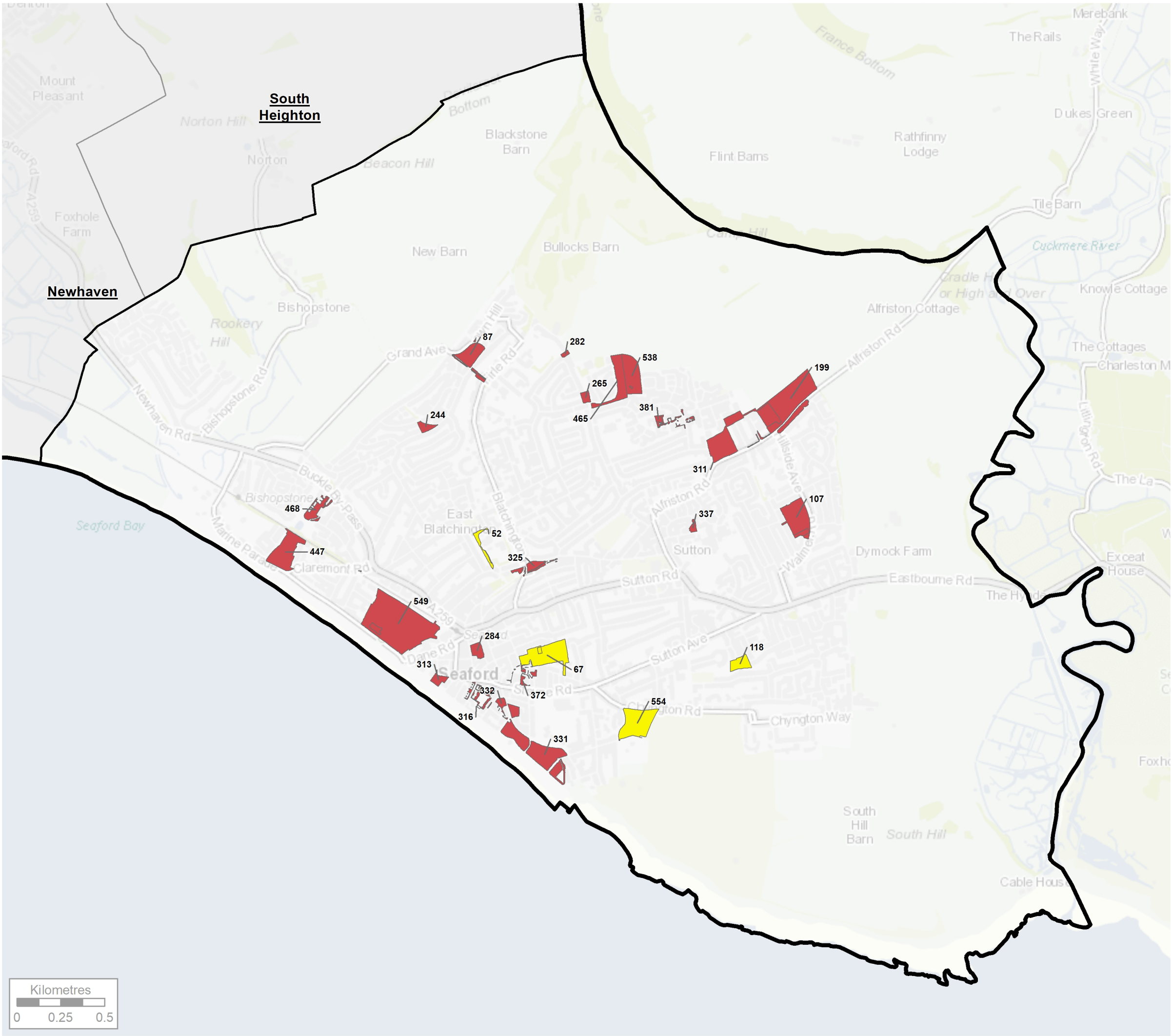
Low

Open Space Value was assessed on a series of Landscape Values.

Value scores are grouped as follows:
60 - 100% High
40 - 59% Medium
0 - 39% Low



Project Lewes District Council Open Space Strategy				
Title Open Space Value Assessment - Survey Results - Ringmer				
Drawing Number G7449.004.9				
Drawn HF	Checked JO	Approved	Scale 1:25,000 @ A3	Date 28/04/2020



KEY

Lewes District Council

Parish Boundary

Value Assessment Score

High

Medium

Low

Open Space Value was assessed on a series of Landscape Values.

Value scores are grouped as follows:
60 - 100% High
40 - 59% Medium
0 - 39% Low

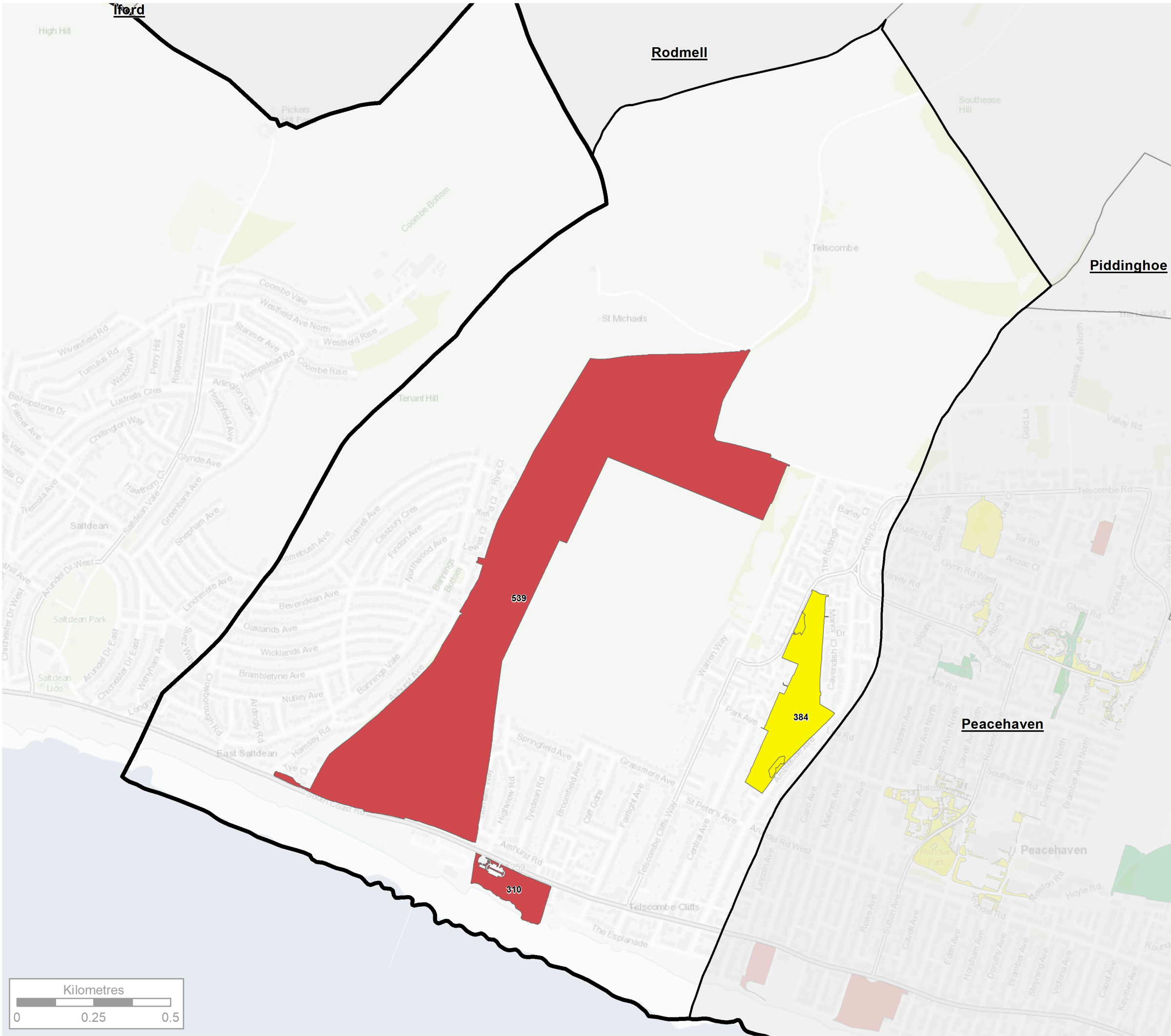
Contains OS data © Crown Copyright and database right 2020.
All rights reserved
© Crown copyright Lewes District Council Ordnance Survey LA 100019275 2020

Site Map

1:593,026

THE ENVIRONMENT PARTNERSHIP

Project Lewes District Council Open Space Strategy					
Title Open Space Value Assessment - Survey Results - Seaford					
Drawing Number G7449.004.10					
Drawn HF	Checked JO	Approved	Scale 1:21,000 @ A3	Date 28/04/2020	



KEY

- Lewes District Council
- Parish Boundary

Value Assessment Score

- High
- Medium
- Low

Open Space Value was assessed on a series of Landscape Values.

Value scores are grouped as follows:
60 - 100% High
40 - 59% Medium
0 - 39% Low

Contains OS data © Crown Copyright and database right 2020.
All rights reserved
© Crown copyright Lewes District Council Ordnance Survey LA 100019275 2020

Site Map

THE ENVIRONMENT PARTNERSHIP

Project Lewes District Council Open Space Strategy				
Title Open Space Value Assessment - Survey Results - Telscombe				
Drawing Number G7449.004.11				
Drawn HF	Checked JO	Approved	Scale 1:12,000 @ A3	Date 28/04/2020