

AECOM

PROJECT
Lewes Landscape Sensitivity Assessment

CLIENT
Eastbourne and Lewes District Councils

CONSULTANT
AECOM Limited
Sunley House
4 Bedford Park
Surrey, CR0 2AP
www.aecom.com

LEGEND

- Land North of Firle - T02FL
 - Lewes District Boundary
 - Lewes District Boundary - 2km ZTV Extent
 - South Downs National Park
 - Woodland
 - Building
- Zone of Theoretical Visibility - Degree of Maximum Visibility of Site**
- Low Visibility
 -
 -
 - High Visibility

NOTES:

Zone of Theoretical Visibility (ZTV) has been generated using Ordnance Survey Terrain 5 digital terrain model (DTM) which does not take into account the screening effects of vegetation, buildings or other structures. Existing Buildings have been incorporated into the DTM from OS Mastermap with an assumed height of 7.5. Woodland from the National Forest Inventory has also been incorporated into the DTM with an assumed height of 10m. ZTV is based upon Grid Points at 100m apart within the Site Footprints, with an observer height of 1.6m. All heights mentioned above are above ground level (AGL) unless otherwise specified.

Contains, or is based on, information supplied by the Forestry Commission. © Crown copyright and database right 2019 Ordnance Survey (100021242). Contains Ordnance Survey Data © Crown Copyright and database right 2023. Reproduced from Ordnance Survey digital map data © Crown copyright 2023. All rights reserved. License number 0100031673.

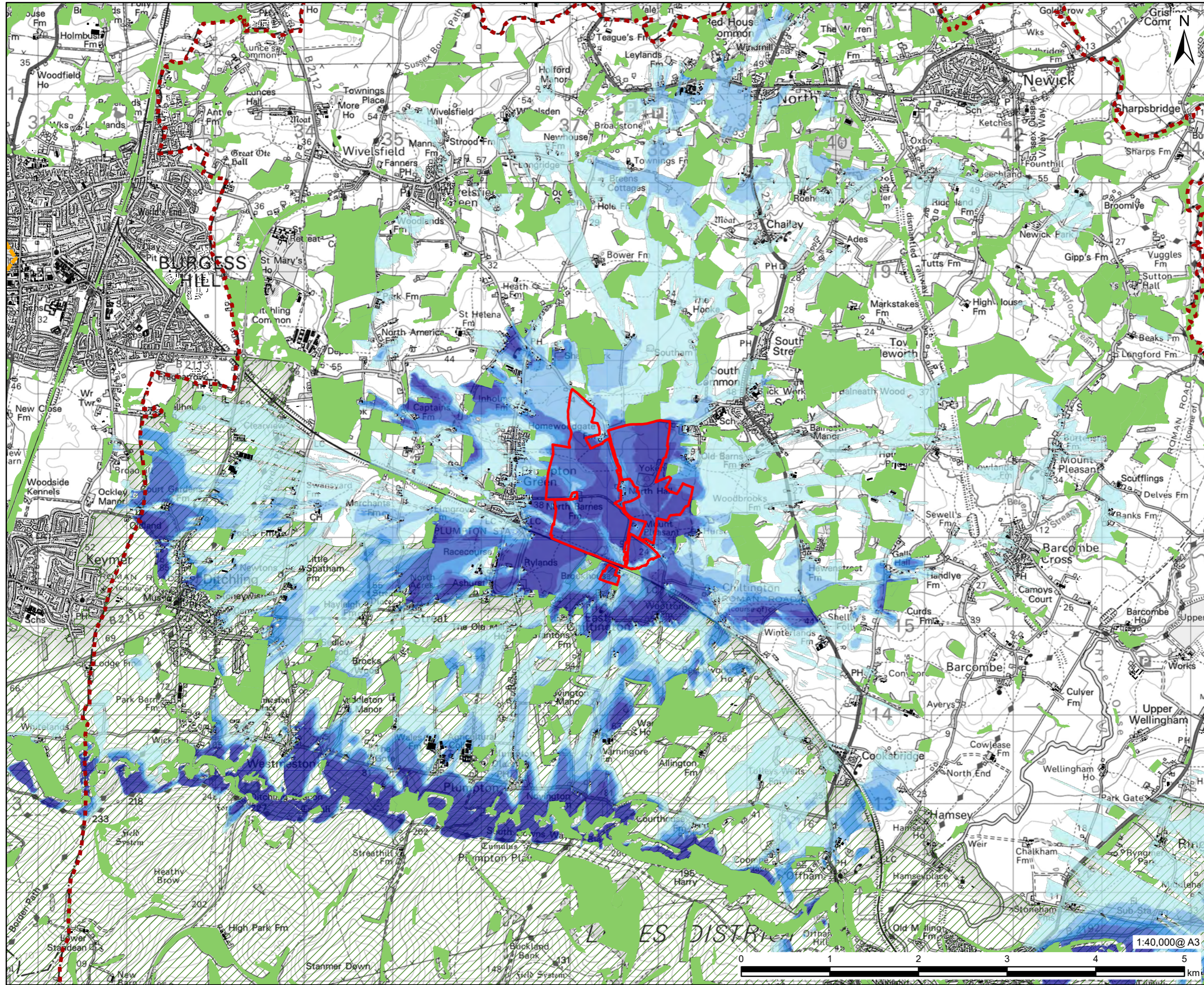
ISSUE PURPOSE
FINAL

PROJECT NUMBER
60676353

FIGURE TITLE
Land North of Firle T02FL - Zone of Theoretical Visibility

FIGURE NUMBER
Figure C.5

This drawing has been prepared for the use of AECOM's client. It may not be used, modified, reproduced or relied upon by third parties, except as agreed by AECOM or as required by law. AECOM accepts no responsibility, and denies any liability whatsoever, to any party that uses or relies on this drawing without AECOM's express written consent. Do not scale this document. All measurements must be obtained from the stated dimensions.



AECOM

PROJECT
Lewes Landscape Sensitivity Assessment

CLIENT
Eastbourne and Lewes District Councils

CONSULTANT
AECOM Limited
Sunley House
4 Bedford Park
Surrey, CR0 2AP
www.aecom.com

- LEGEND**
- Land inbetween Plumpton Green and South Chailey - T11EC
 - Lewes District Boundary
 - Lewes District Boundary - 2km ZTV Extent
 - South Downs National Park
 - Woodland
 - Building
- Zone of Theoretical Visibility - Degree of Maximum Visibility of Site**
- Low Visibility
 -
 -
 - High Visibility

NOTES:

Zone of Theoretical Visibility (ZTV) has been generated using Ordnance Survey Terrain 5 digital terrain model (DTM) which does not take into account the screening effects of vegetation, buildings or other structures.

Existing Buildings have been incorporated into the DTM from OS Mastermap with an assumed height of 7.5. Woodland from the National Forest Inventory has also been incorporated into the DTM with an assumed height of 10m.

ZTV is based upon Grid Points at 100m apart within the Site Footprints, with an observer height of 1.6m. All heights mentioned above are above ground level (AGL) unless otherwise specified.

Contains, or is based on, information supplied by the Forestry Commission. © Crown copyright and database right 2019 Ordnance Survey (100021242).

Contains Ordnance Survey Data © Crown Copyright and database right 2023. Reproduced from Ordnance Survey digital map data © Crown copyright 2023. All rights reserved. License number 0100031673.

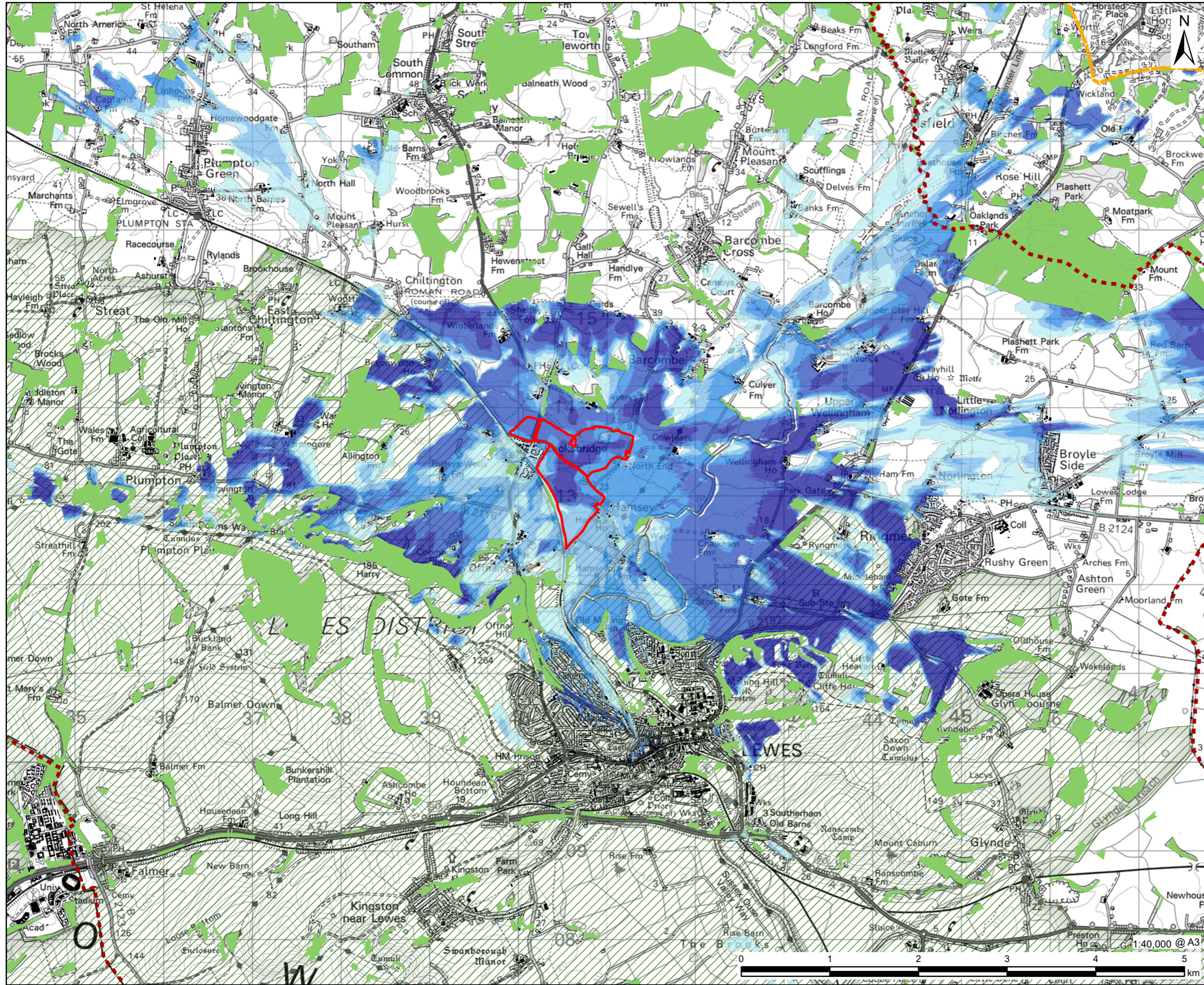
ISSUE PURPOSE
FINAL

PROJECT NUMBER
60676353

FIGURE TITLE
Land inbetween Plumpton Green and South Chailey T11EC - Zone of Theoretical Visibility

FIGURE NUMBER
Figure C.1

This drawing has been prepared for the use of AECOM's client. It may not be used, modified, reproduced or relied upon by third parties, except as agreed by AECOM or as required by law. AECOM accepts no responsibility, and denies any liability whatsoever, to any party that uses or relies on this drawing without AECOM's express written consent. Do not scale this document. All measurements must be obtained from the stated dimensions.



PROJECT
Lewes Landscape Sensitivity Assessment

CLIENT
Eastbourne and Lewes District Councils

CONSULTANT
AECOM Limited
Sunley House
4 Bedford Park
Surrey, CR0 2AP
www.aecom.com

- LEGEND**
- ▭ Land North of Cooksbridge - T19HY
 - - - Lewes District Boundary
 - ▭ Lewes District Boundary - 2km ZTV Extent
 - ▨ South Downs National Park
 - Woodland
 - Building
- Zone of Theoretical Visibility - Degree of Maximum Visibility of Site**
- Low Visibility
 -
 -
 - High Visibility

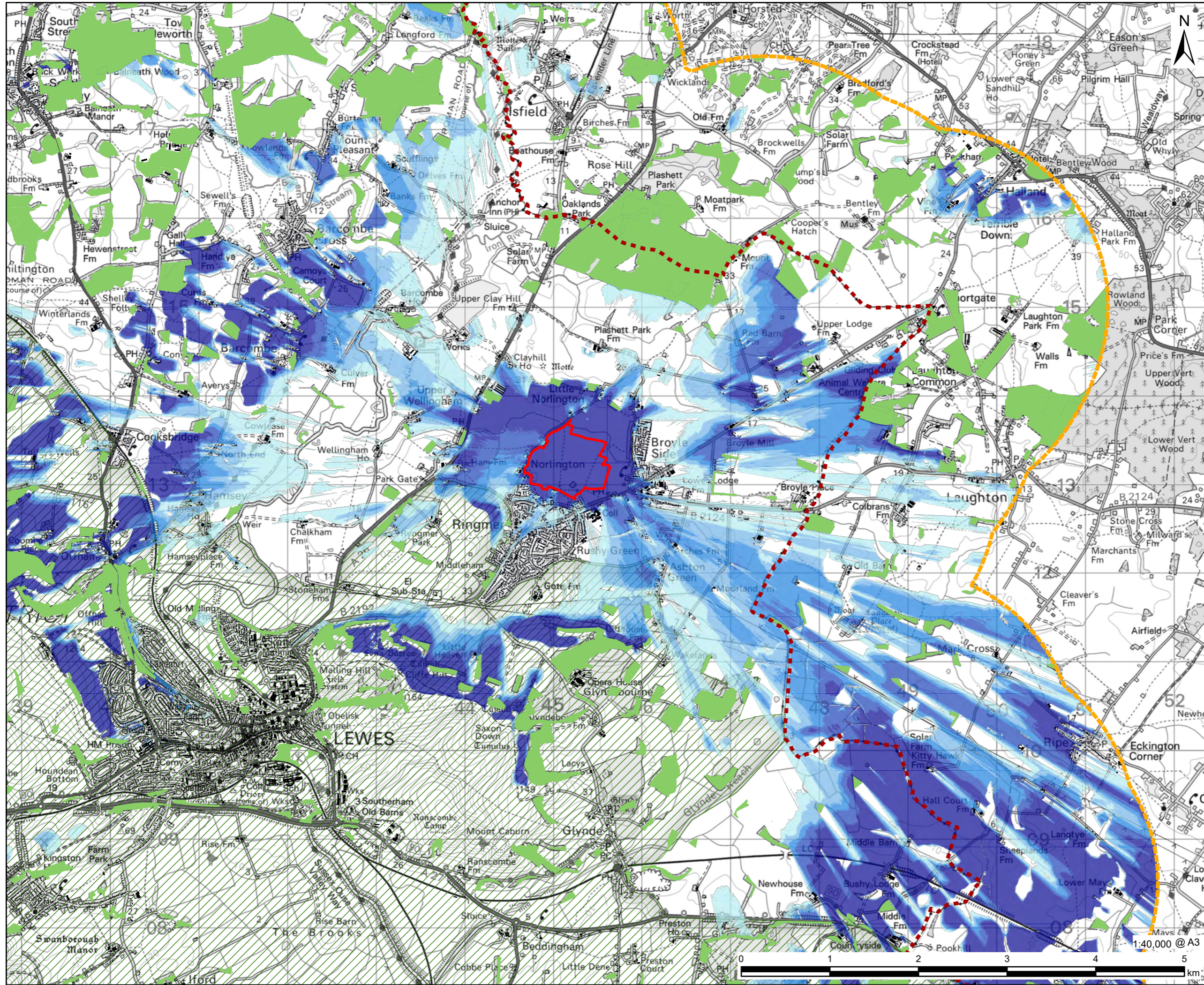
NOTES:

Zone of Theoretical Visibility (ZTV) has been generated using Ordnance Survey Terrain 5 digital terrain model (DTM) which does not take into account the screening effects of vegetation, buildings or other structures. Existing Buildings have been incorporated into the DTM from OS Mastermap with an assumed height of 7.5. Woodland from the National Forest Inventory has also been incorporated into the DTM with an assumed height of 10m. ZTV is based upon Grid Points at 100m apart within the Site Footprints, with an observer height of 1.6m. All heights mentioned above are above ground level (AGL) unless otherwise specified.

Contains, or is based on, information supplied by the Forestry Commission. © Crown copyright and database right 2019 Ordnance Survey (100021242). Contains Ordnance Survey Data © Crown Copyright and database right 2023. Reproduced from Ordnance Survey digital map data © Crown copyright 2023. All rights reserved. License number 0100031673.

ISSUE PURPOSE
FINAL
PROJECT NUMBER
60676353
FIGURE TITLE
Land North of Cooksbridge T19HY - Zone of Theoretical Visibility
FIGURE NUMBER
Figure C.2

This drawing has been prepared for the use of AECOM's client. It may not be used, modified, reproduced or relied upon by third parties, except as agreed by AECOM or as required by law. AECOM accepts no responsibility, and denies any liability whatsoever, to any party that uses or relies on this drawing without AECOM's express written consent. Do not scale this document. All measurements must be obtained from the stated dimensions.



PROJECT
Lewes Landscape Sensitivity Assessment

CLIENT
Eastbourne and Lewes District Councils

CONSULTANT
AECOM Limited
Sunley House
4 Bedford Park
Surrey, CR0 2AP
www.aecom.com

- LEGEND**
- Land North of Ringmer - T51RG
 - - - Lewes District Boundary
 - - - Lewes District Boundary - 2km ZTV Extent
 - / / / South Downs National Park
 - Woodland
 - Building
- Zone of Theoretical Visibility - Degree of Maximum Visibility of Site**
- Low Visibility
 - Medium Visibility
 - High Visibility

NOTES:

Zone of Theoretical Visibility (ZTV) has been generated using Ordnance Survey Terrain 5 digital terrain model (DTM) which does not take into account the screening effects of vegetation, buildings or other structures. Existing Buildings have been incorporated into the DTM from OS Mastermap with an assumed height of 7.5. Woodland from the National Forest Inventory has also been incorporated into the DTM with an assumed height of 10m. ZTV is based upon Grid Points at 100m apart within the Site Footprints, with an observer height of 1.6m. All heights mentioned above are above ground level (AGL) unless otherwise specified.

Contains, or is based on, information supplied by the Forestry Commission. © Crown copyright and database right 2019 Ordnance Survey (100021242). Contains Ordnance Survey Data © Crown Copyright and database right 2023. Reproduced from Ordnance Survey digital map data © Crown copyright 2023. All rights reserved. License number 0100031673.

ISSUE PURPOSE
FINAL

PROJECT NUMBER
60676353

FIGURE TITLE
Land North of Ringmer T51RG - Zone of Theoretical Visibility

FIGURE NUMBER
Figure C.3

This drawing has been prepared for the use of AECOM's client. It may not be used, modified, reproduced or relied upon by third parties, except as agreed by AECOM or as required by law. AECOM accepts no responsibility, and denies any liability whatsoever, to any party that uses or relies on this drawing without AECOM's express written consent. Do not scale this document. All measurements must be obtained from the stated dimensions.

