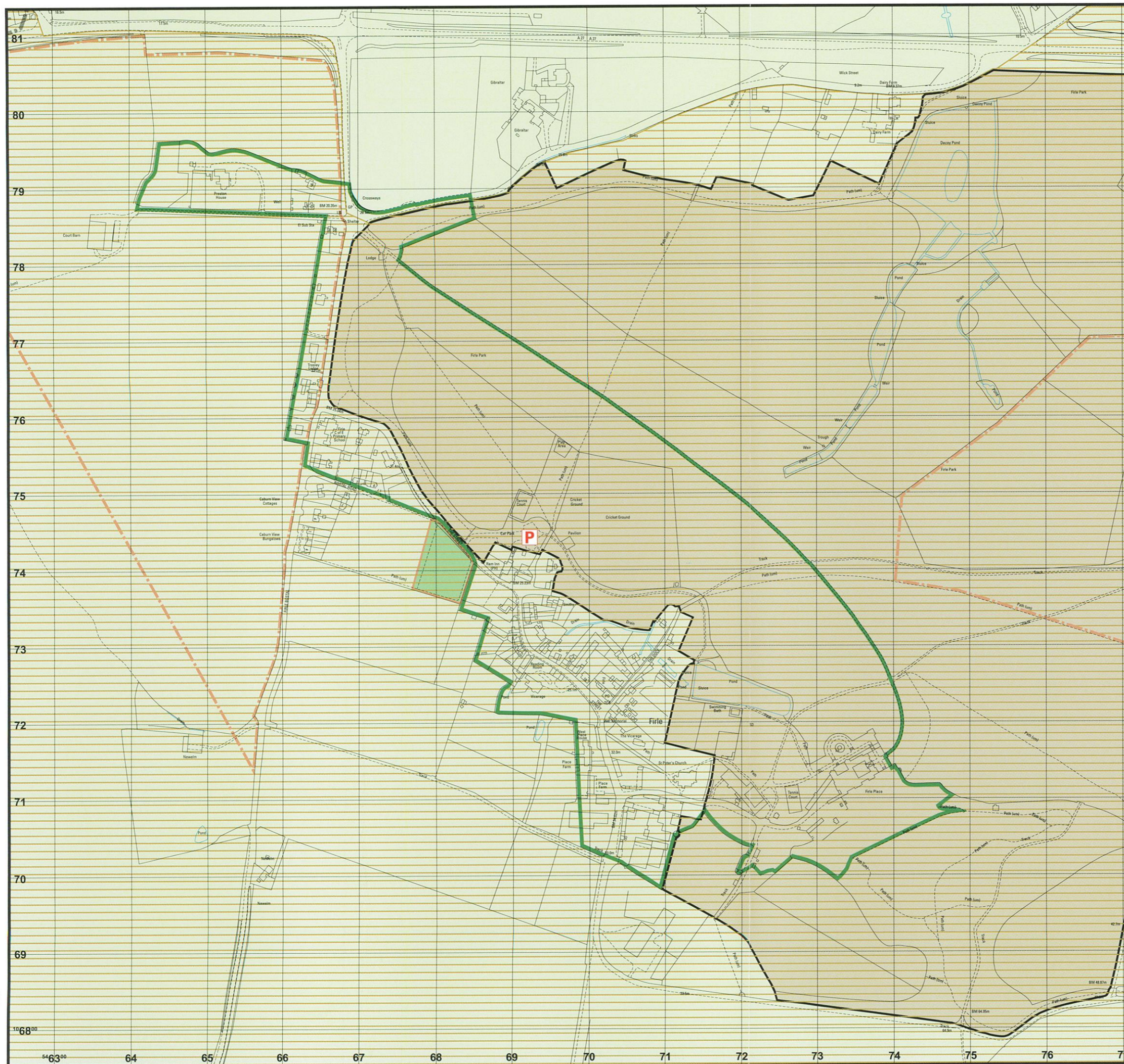


Inset Map Number 11
Firle Parish
FIRLE

Key

-  Countryside Policies (See Policies RES6, RES7, RES8, RES10, RES14, E9, E12, E14, E17, CT1, CT3, CT4, CT5, CT6, RE4, T5)
-  Area of Outstanding Natural Beauty (See Policies CT2, ST25, ST29, E16)
-  Conservation Areas (See Policies H4, H5, H6, H7, H8, ST25, ST29)
-  Parks and Gardens of Special Historic Interest (See Policy H13)
-  Sites of Local Archaeological Interest (See Policies H9, H10, H11)
-  Allotments (See Policy RE9)
-  Existing Car Parking available to public (See Policy T13)



NB
See also District - wide policies (Appendix 1) which are not annotated on the Inset Maps

Reproduced from Ordnance Survey mapping with the permission of the Controller of HMSO. Crown Copyright Reserved. Unauthorised reproduction infringes Crown Copyright and may lead to prosecution or civil proceedings. License No. LA078395
Maps produced by Lovell Johns Ltd., Oxford, England.

