








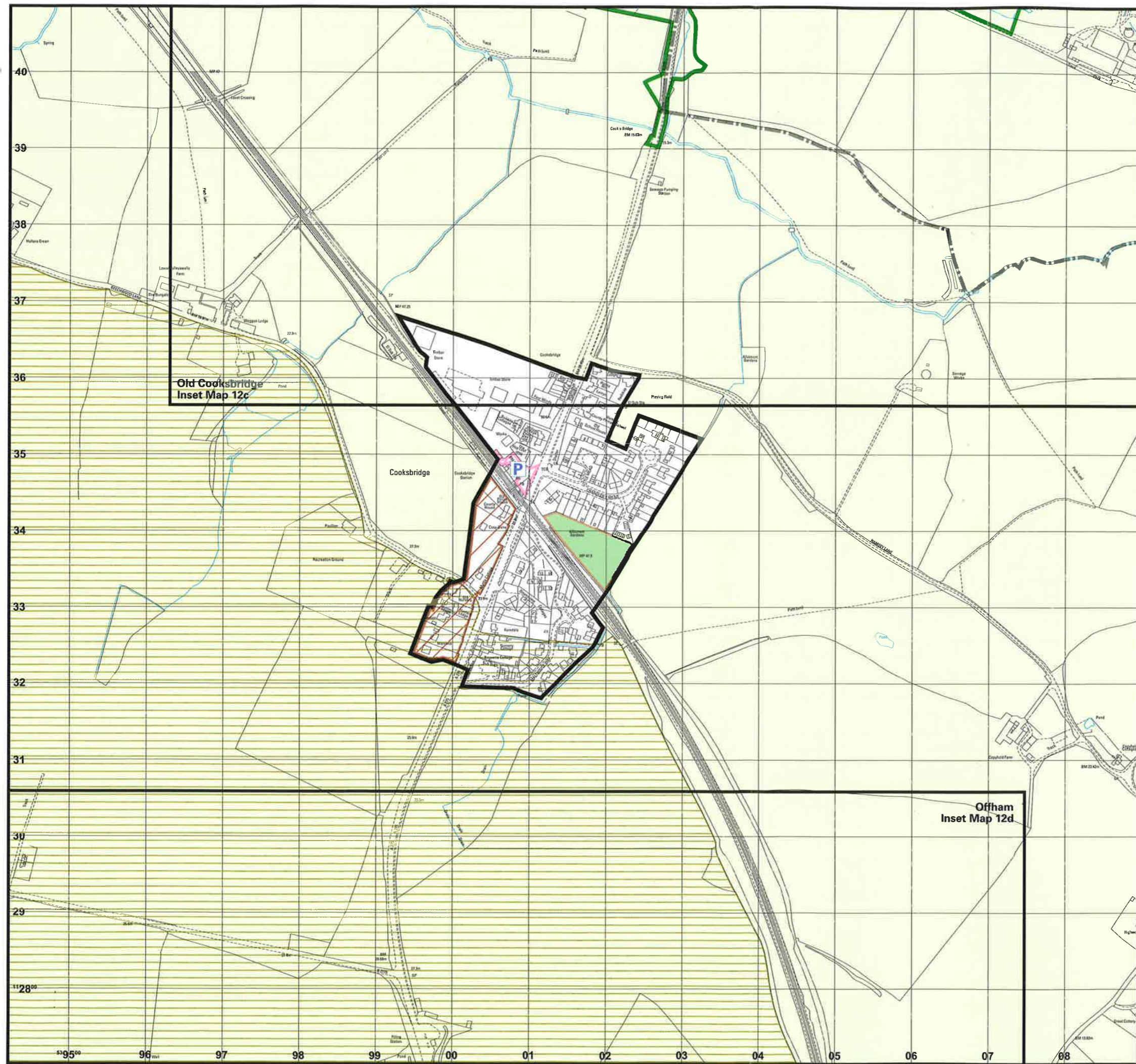


**Inset Map Number 12a  
Hamsey Parish  
"NEW" COOKSBRIDGE**

**Key**

-  Planning Boundary (See Policies RES5, RES9, RES16, RES17, E11, CT1, CT7)
-  Countryside Policies (See Policies RES6, RES7, RES8, RES10, RES14, E9, E12, E14, E17, CT1, CT3, CT4, CT5, CT6, RE4, T5)
-  Area of Outstanding Natural Beauty (See Policies CT2, ST25, ST29, E16)
-  Conservation Area (See Policies H4, H5, H6, H7, H8, ST25, ST29)
-  Area of Established Character (See Policy H12)
-  Allotments (See Policy RE9)
-  Car Parking at/near Railway Stations (See Policy T13)
-  Parish Boundaries
-  Inset Map Boundaries



**NB**  
See also District - wide policies (Appendix 1) which are not annotated on the Inset Maps

Reproduced from Ordnance Survey mapping with the permission of the Controller of HMSO. Crown Copyright Reserved. Unauthorised reproduction infringes Crown Copyright and may lead to prosecution or civil proceedings. License No. LA078395

Maps produced by Lovell Johns Ltd., Oxford, England.

