








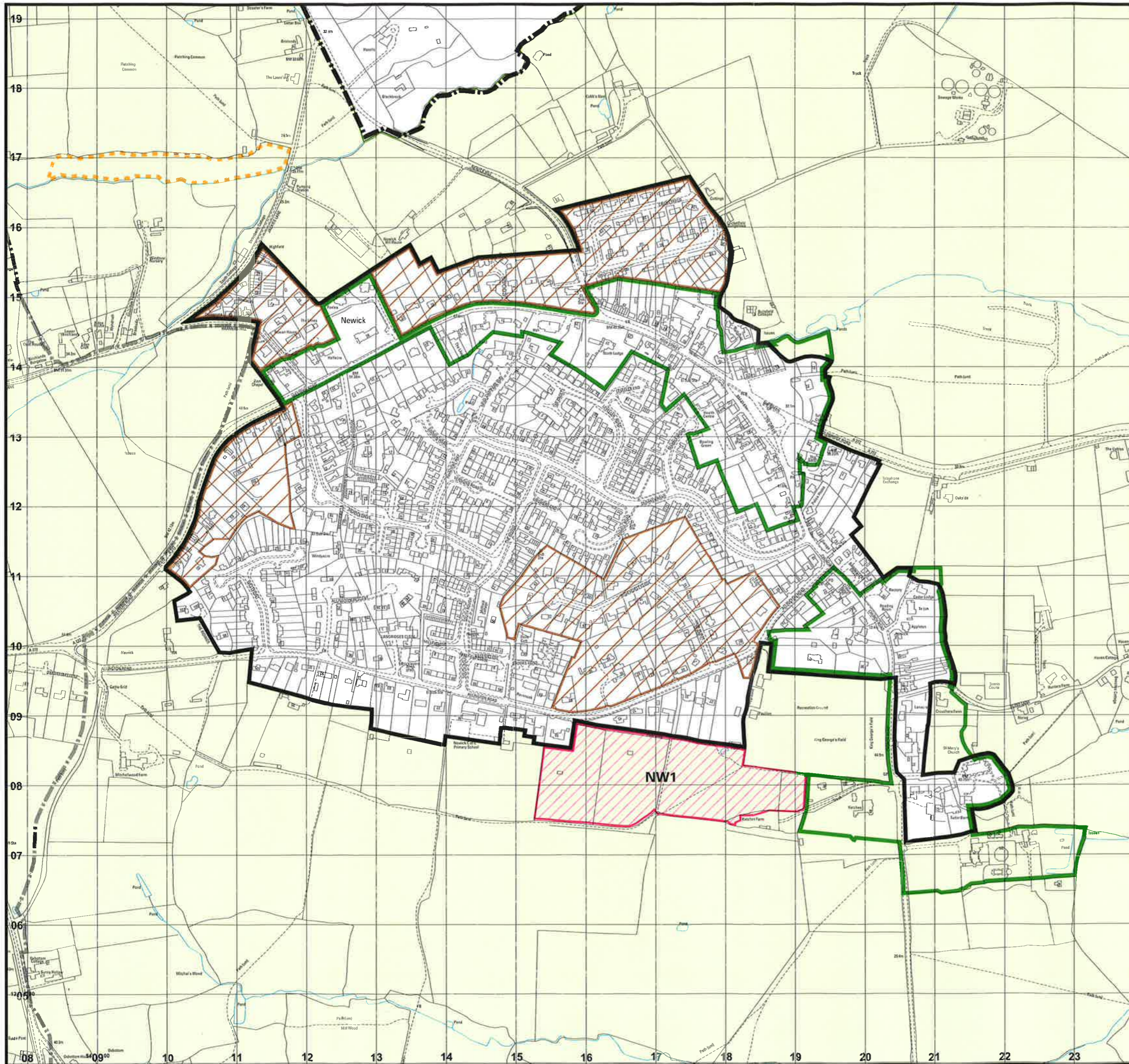


Inset Map Number 15
Newick Parish
NEWICK

Key

-  Planning Boundary (See Policies RES5, RES9, RES16, RES17, E11, CT1, CT7)
-  Countryside Policies (See Policies RES6, RES7, RES8, RES10, RES14, E9, E12, E14, E17, CT1, CT3, CT4, CT5, CT6, RE4, T5)
-  Site Specific Policy
-  Conservation Area (See Policies H4, H5, H6, H7, H8, ST25, ST29)
-  Area of Established Character (See Policy H12)
-  Sites of Nature Conservation Importance (See Policy ST9)
-  Parish Boundaries
-  District Boundary
-  Inset Map Boundaries



NB
See also District - wide policies (Appendix 1) which are not annotated on the Inset Maps

Reproduced from Ordnance Survey mapping with the permission of the Controller of HMSO. Crown Copyright Reserved. Unauthorised reproduction infringes Crown Copyright and may lead to prosecution or civil proceedings. License No. LA078395
Maps produced by Lovell Johns Ltd., Oxford, England.

